

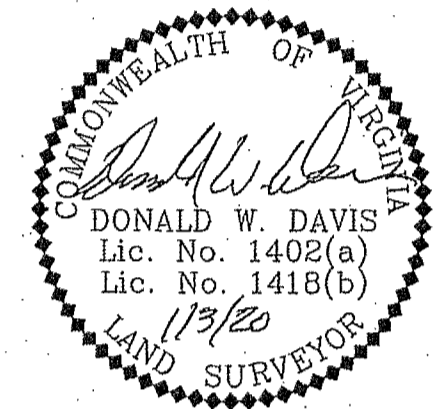
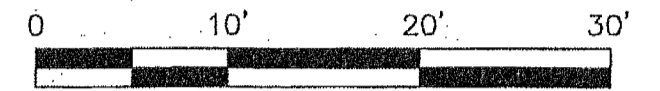
PHASE SIX - BUILDING SEVEN DETAIL

CONDOMINIUM PLAT  
OF

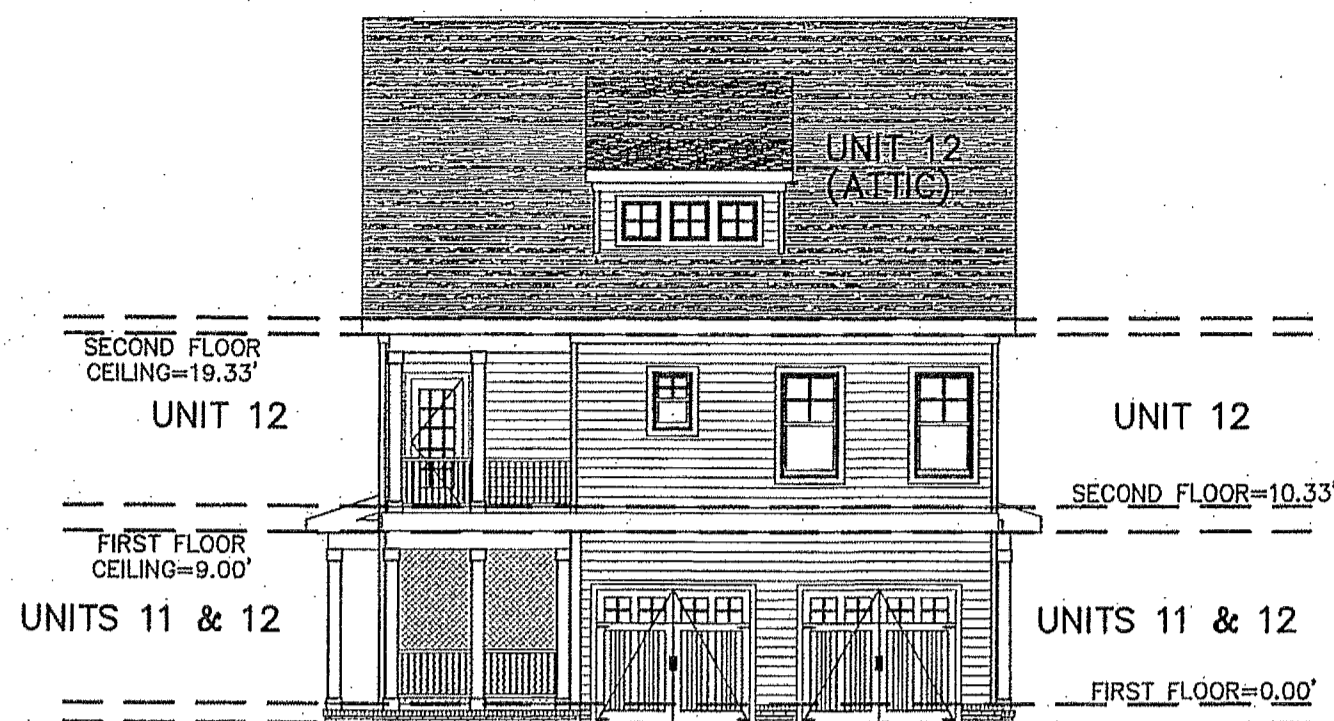
PHASE SIX  
MAINSTAY AT  
COMMONWEALTH GREEN  
SECTION ONE

BETHEL MAGISTERIAL DISTRICT  
COUNTY OF YORK, VIRGINIA  
SCALE: 1"=10' DATE: JANUARY 3, 2020  
SHEET 5 OF 5

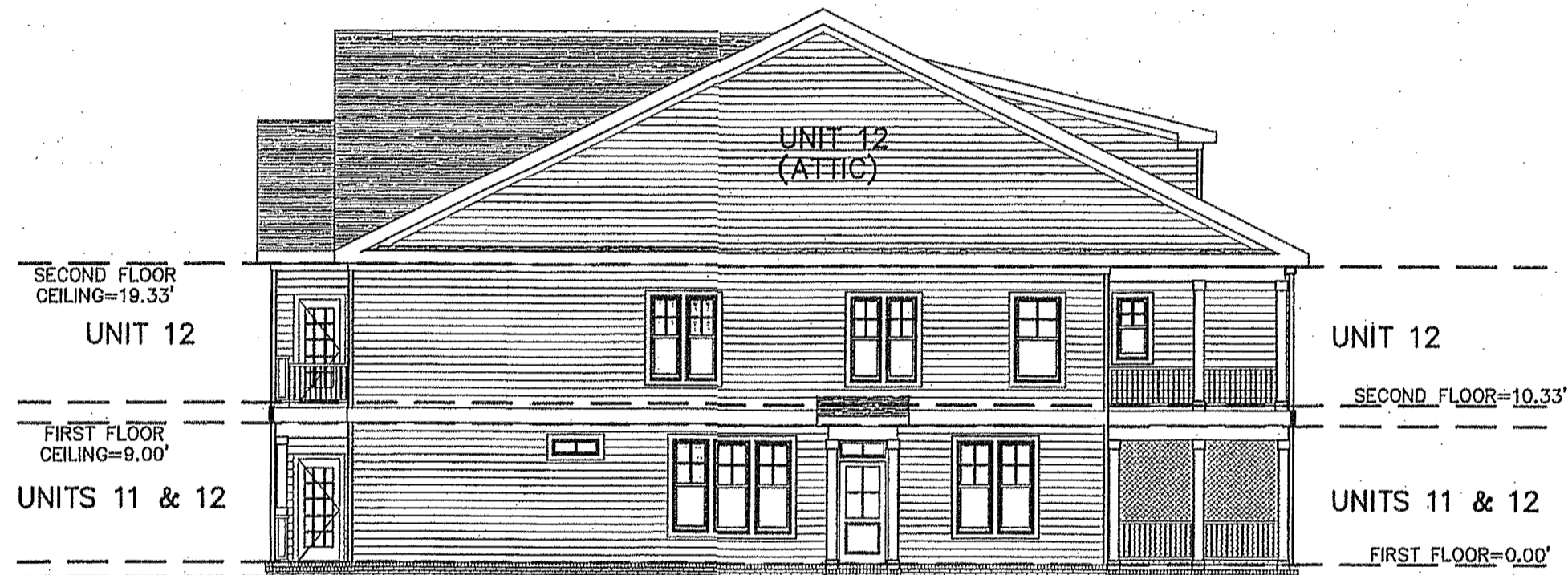
DAVIS & ASSOCIATES, P.C.  
LAND SURVEYORS AND PLANNERS  
3630 GEORGE WASHINGTON MEMORIAL HIGHWAY  
YORKTOWN, VIRGINIA 23693  
(757)867-8583



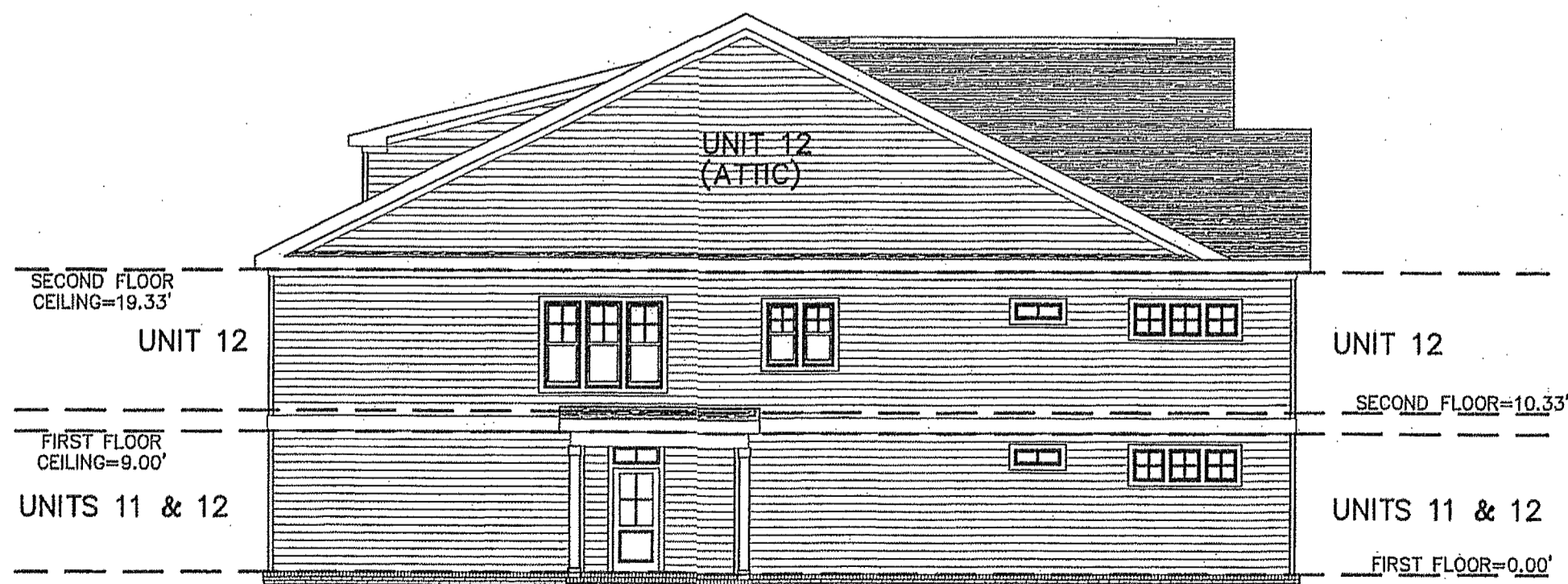
FRONT ELEVATION  
(PUBLIC STREET SIDE)



REAR ELEVATION  
(PRIVATE LANE SIDE)



LEFT SIDE ELEVATION



RIGHT SIDE ELEVATION

APPROVED  
YORK COUNTY BOARD OF SUPERVISORS  
BY: Jason Kassel  
PLAT APPROVING AGENT  
DATE: FEBRUARY 13, 2020

STATE OF VIRGINIA  
COUNTY OF YORK  
IN THE CLERK'S OFFICE OF THE YORK -  
POQUOSON CIRCUIT COURT THIS 14th  
DAY OF February 2020, THIS MAP WAS  
PRESENTED AND ADMITTED TO RECORD AS  
THE LAW DIRECTS AS INSTRUMENT # 200002811  
KRISTEN N. NELSON, CLERK

TESTE: \_\_\_\_\_  
CLERK  
BY: Megan Bowen DC

20 FEB 14 AM 10:52