

PLAT OF SUBDIVISION SMITH FARM ESTATES PHASE 1A

BETHEL DISTRICT
YORK COUNTY, VIRGINIA

Date: 07/25/2019 Scale: 1" = 200' Proj. No.: W10415-02 Proj. Contacts: MHR/JCA



816 Greenbrier Circle, Suite F
Chesapeake, Virginia 23320
Phone (757) 410-7436
www.aesva.com

Hampton Roads | Central Virginia | Middle Peninsula

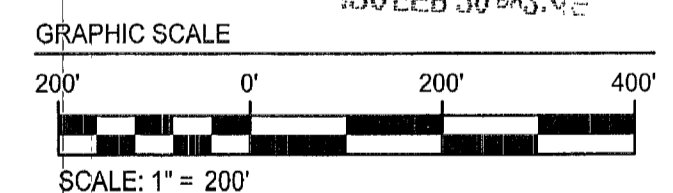
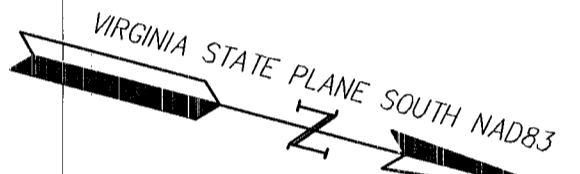
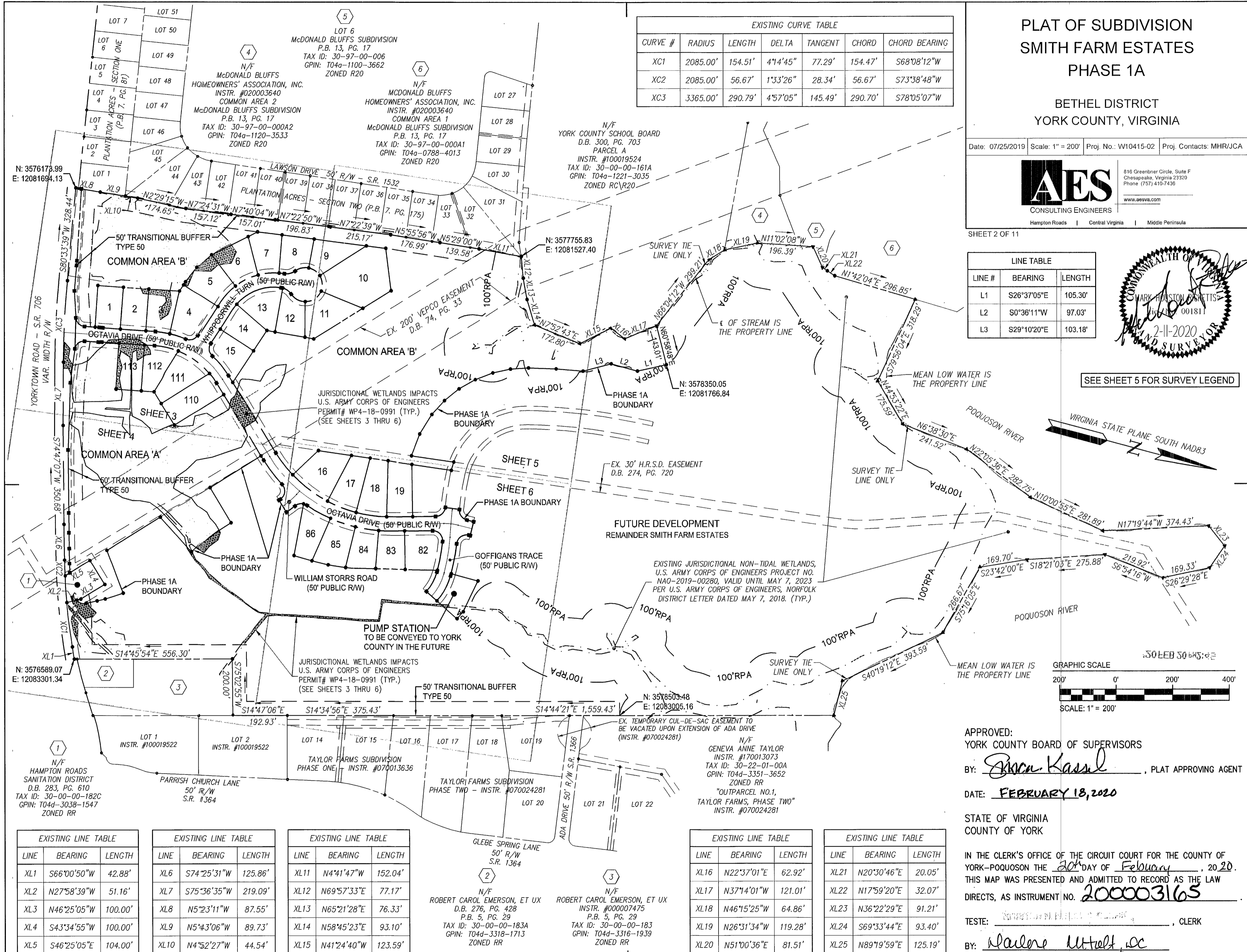
SHEET 2 OF 11

LINE TABLE		
LINE #	BEARING	LENGTH
L1	S26°37'05"E	105.30'
L2	S0°36'11"W	97.03'
L3	S29°10'20"E	103.18'



SEE SHEET 5 FOR SURVEY LEGEND

EXISTING CURVE TABLE						
CURVE #	RADIUS	LENGTH	DELTA	TANGENT	CHORD	CHORD BEARING
XC1	2085.00'	154.51'	4°14'45"	77.29'	154.47'	S68°08'12"W
XC2	2085.00'	56.67'	1°33'26"	28.34'	56.67'	S73°38'48"W
XC3	3365.00'	290.79'	4°57'05"	145.49'	290.70'	S78°05'07"W



APPROVED:
YORK COUNTY BOARD OF SUPERVISORS
BY: Sharon Kasal, PLAT APPROVING AGENT
DATE: FEBRUARY 18, 2020

STATE OF VIRGINIA
COUNTY OF YORK
IN THE CLERK'S OFFICE OF THE CIRCUIT COURT FOR THE COUNTY OF YORK-POQUOSON THE 20 DAY OF February, 2020.
THIS MAP WAS PRESENTED AND ADMITTED TO RECORD AS THE LAW DIRECTS, AS INSTRUMENT NO. 200003165
TESTE: _____, CLERK
BY: Madeline Hult, CLERK

EXISTING LINE TABLE		
LINE	BEARING	LENGTH
XL1	S66°00'50"W	42.88'
XL2	N27°58'39"W	51.16'
XL3	N46°25'05"W	100.00'
XL4	S43°34'55"W	100.00'
XL5	S46°25'05"E	104.00'

EXISTING LINE TABLE		
LINE	BEARING	LENGTH
XL6	S74°25'31"W	125.86'
XL7	S75°36'35"W	219.09'
XL8	N5°23'11"W	87.55'
XL9	N5°43'06"W	89.73'
XL10	N4°52'27"W	44.54'

EXISTING LINE TABLE		
LINE	BEARING	LENGTH
XL11	N4°41'47"W	152.04'
XL12	N69°57'33"E	77.17'
XL13	N65°21'28"E	76.33'
XL14	N58°45'23"E	93.10'
XL15	N41°24'40"W	123.59'

EXISTING LINE TABLE		
LINE	BEARING	LENGTH
XL16	N22°37'01"E	62.92'
XL17	N37°14'01"W	121.01'
XL18	N46°15'25"W	64.86'
XL19	N26°31'34"W	119.28'
XL20	N51°00'36"E	81.51'

EXISTING LINE TABLE		
LINE	BEARING	LENGTH
XL21	N20°30'46"E	20.05'
XL22	N17°59'20"E	32.07'
XL23	N36°22'29"E	91.21'
XL24	S69°33'44"E	93.40'
XL25	N89°19'59"E	125.19'