

PLAT OF SUBDIVISION SMITH FARM ESTATES PHASE 1A

BETHEL DISTRICT
YORK COUNTY, VIRGINIA

Date: 07/25/2019 Scale: 1" = 40' Proj. No.: W10415-02 Proj. Contacts: MHR/JCA

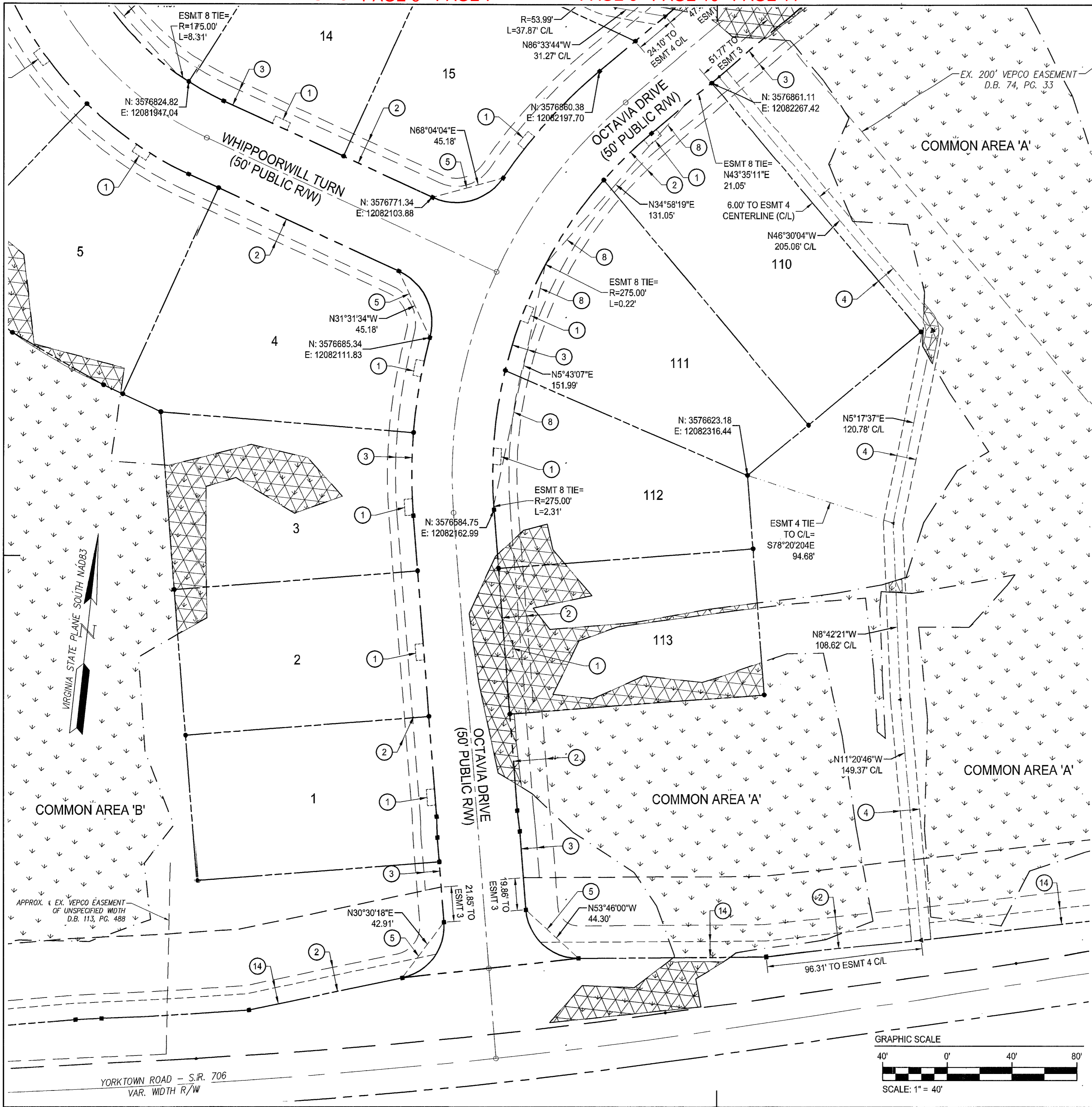


SHEET 8 OF 11



SEE SHEET 5 FOR SURVEY LEGEND

- EASEMENT LEGEND:**
- ① 5'x10' WATERLINE EASEMENT (TYPICAL, ALL LOTS) TO BE DEDICATED TO THE CITY OF NEWPORT NEWS.
 - ② EXISTING 15' AND 20' DOMINION ENERGY EASEMENT, INSTR. #190015212.
 - ③ 10' LANDSCAPE PRESERVATION EASEMENT HEREBY CONVEYED TO YORK COUNTY.
 - ④ 12' PEDESTRIAN ACCESS EASEMENT HEREBY CONVEYED TO PUBLIC USE.
 - ⑤ VARIABLE WIDTH SIGHT EASEMENT HEREBY CONVEYED TO YORK COUNTY.
 - ⑥ 10' DRAINAGE EASEMENT HEREBY CONVEYED TO YORK COUNTY.
 - ⑦ 50' DRAINAGE EASEMENT HEREBY CONVEYED TO YORK COUNTY.
 - ⑧ VARIABLE WIDTH DRAINAGE EASEMENT HEREBY CONVEYED TO THE SMITH FARMS ESTATES HOMEOWNERS ASSOCIATION.
 - ⑨ 10' DRAINAGE EASEMENT HEREBY CONVEYED TO THE SMITH FARMS ESTATES HOMEOWNERS ASSOCIATION.
 - ⑩ 15' DRAINAGE EASEMENT HEREBY CONVEYED TO THE SMITH FARMS ESTATES HOMEOWNERS ASSOCIATION.
 - ⑪ 20' DRAINAGE EASEMENT HEREBY CONVEYED TO THE SMITH FARMS ESTATES HOMEOWNERS ASSOCIATION.
 - ⑫ 20' AND VARIABLE WIDTH UTILITY EASEMENT HEREBY CONVEYED TO YORK COUNTY.
 - ⑬ TEMPORARY TURN AROUND EASEMENT TO BE VACATED UPON EXTENSION OF GOFFIGANS TRACE (50' PUBLIC R/W).
 - ⑭ 10' RESTRICTED ACCESS EASEMENT HEREBY CONVEYED TO YORK COUNTY.



APPROVED:
YORK COUNTY BOARD OF SUPERVISORS

BY: Ernest Kasal, PLAT APPROVING AGENT

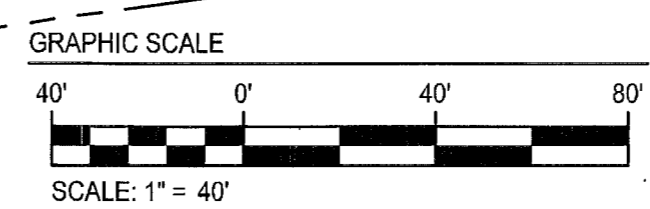
DATE: FEBRUARY 18, 2020

STATE OF VIRGINIA
COUNTY OF YORK

IN THE CLERK'S OFFICE OF THE CIRCUIT COURT FOR THE COUNTY OF YORK-POQUOSON THE 20th DAY OF February, 2020. THIS MAP WAS PRESENTED AND ADMITTED TO RECORD AS THE LAW DIRECTS, AS INSTRUMENT NO. 200003165

TESTE: _____, CLERK

BY: Douane H. Holt, Jr.



YORKTOWN ROAD - S.R. 706
VAR. WIDTH R/W