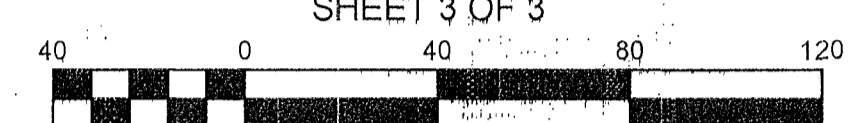


**BOUNDARY LINE ADJUSTMENT  
OF PROPERTIES STANDING IN THE NAME OF  
COUNTY OF YORK, VIRGINIA  
and  
FALCON CREST HOMES ASSOCIATION**

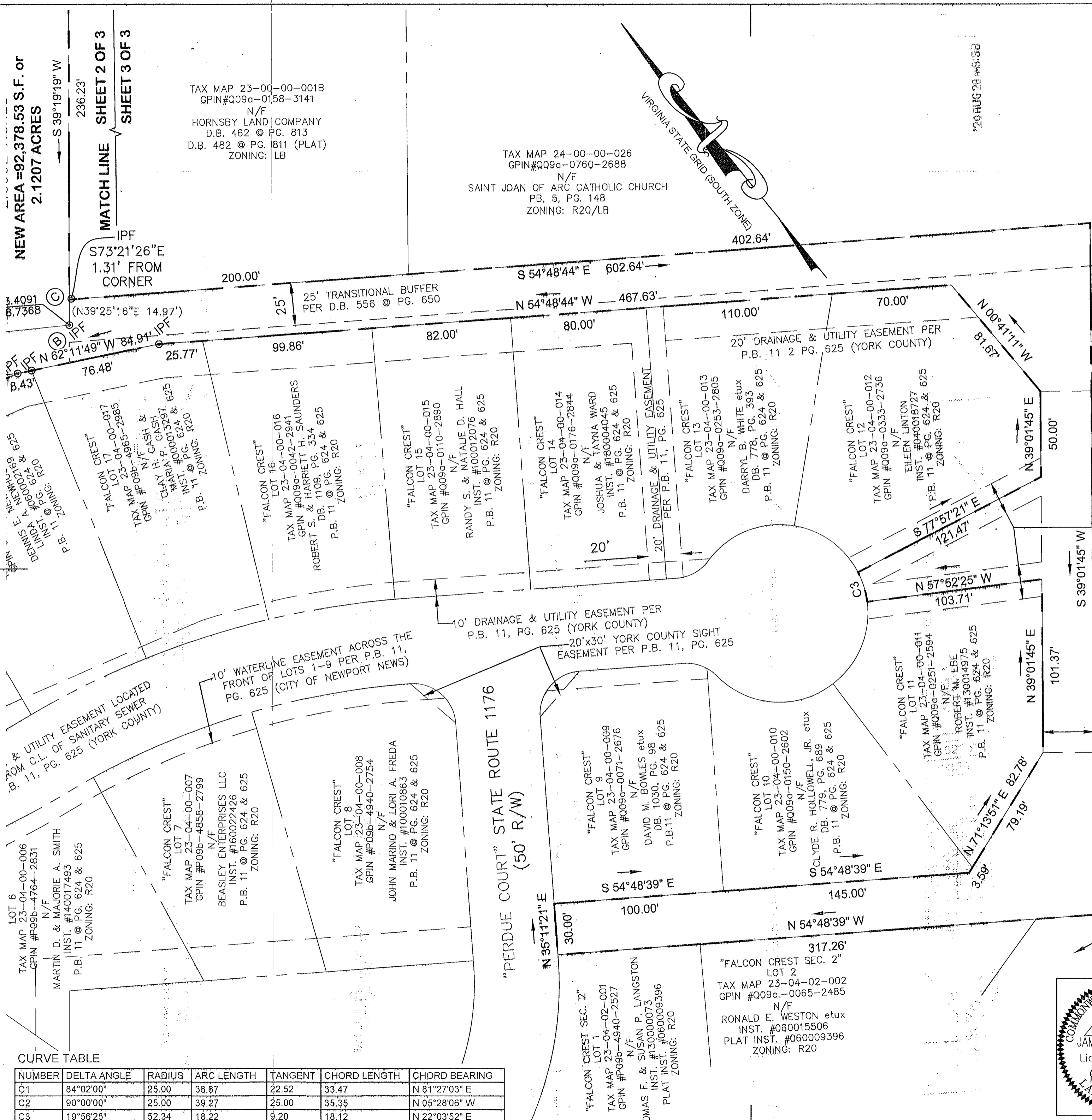
LOCATED: NELSON MAGISTERIAL DISTRICT  
COUNTY OF YORK, VIRGINIA  
DATE: NOVEMBER 12, 2019 and REVISED JANUARY 22, 2020

**BAY DESIGN GROUP**  
SURVEYING ENGINEERING & LAND PLANNING  
40 CROSS STREET, SUITE 100  
P.O. BOX 51  
URBANA, VIRGINIA 23175  
(804) 693-2993 (804) 436-8425

JOB#19027-02  
SHEET 3 OF 3



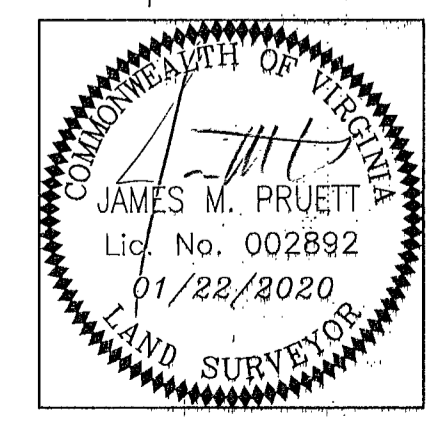
Scale 1" = 40'



TAX MAP 24-00-00-026  
GPIN#Q09c-0760-2688  
N/F  
SAINT JOAN OF ARC CATHOLIC CHURCH  
PB. 5, PG. 148  
ZONING: R20/LB

TAX MAP 24-00-00-026  
GPIN#Q09c-0760-2688  
N/F  
SAINT JOAN OF ARC CATHOLIC CHURCH  
PB. 5, PG. 148  
ZONING: R20/LB

TAX MAP 23-04-02-003  
GPIN #009c-0108-2385  
N/F  
JAMES T. JR. & TRESSA B. CORBETT  
PLAT INST. #060013642  
ZONING: R20



**APPROVED**  
YORK COUNTY BOARD OF SUPERVISORS  
BY: *[Signature]*  
PLAT APPROVING AGENT  
DATE: **8/19/20**

STATE OF VIRGINIA  
COUNTY OF YORK  
IN THE CLERK'S OFFICE OF THE CIRCUIT COURT FOR THE  
COUNTY OF YORK-POQUOSON THE 2nd DAY OF  
September, 2020. THIS MAP WAS PRESENTED AND  
ADMITTED TO RECORD AS THE LAW DIRECTS AS  
INSTRUMENT # 200514392

TESTE: *Kristen W. Nelson*  
CLERK  
BY: *[Signature]*

**CURVE TABLE**

NUMBER	DELTA ANGLE	RADIUS	ARC LENGTH	TANGENT	CHORD LENGTH	CHORD BEARING
C1	84°02'00"	25.00	36.67	22.52	33.47	N 81°27'03" E
C2	90°00'00"	25.00	39.27	25.00	35.35	N 05°28'06" W
C3	19°56'25"	52.34	18.22	9.20	18.12	N 22°03'52" E