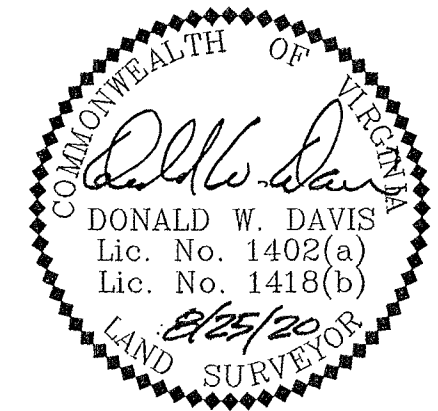


PHASE FOURTEEN – BUILDING FIFTEEN DETAIL
 PHASE FIFTEEN – BUILDING SIXTEEN DETAIL

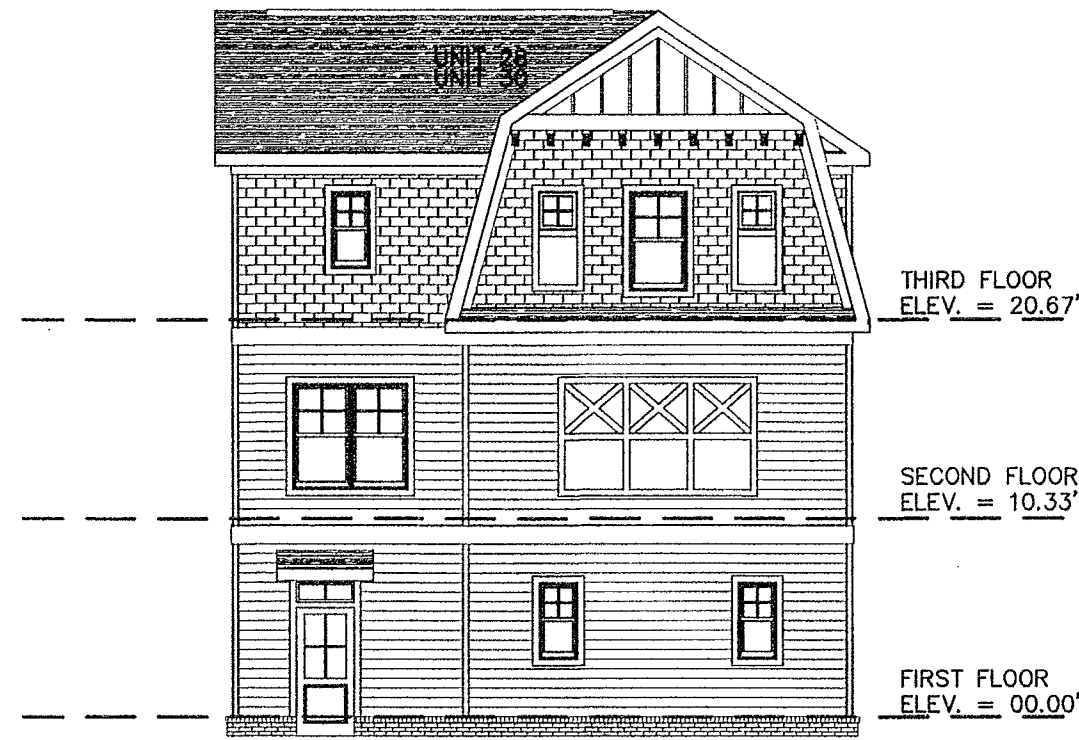
CONDOMINIUM PLAT
 OF
 PHASE FOURTEEN
 AND
 PHASE FIFTEEN
 MAINSTAY AT
 COMMONWEALTH GREEN
 SECTION TWO

BETHEL MAGISTERIAL DISTRICT
 COUNTY OF YORK, VIRGINIA
 SCALE: 1"=10' DATE: AUGUST 25, 2020
 SHEET 6 OF 6

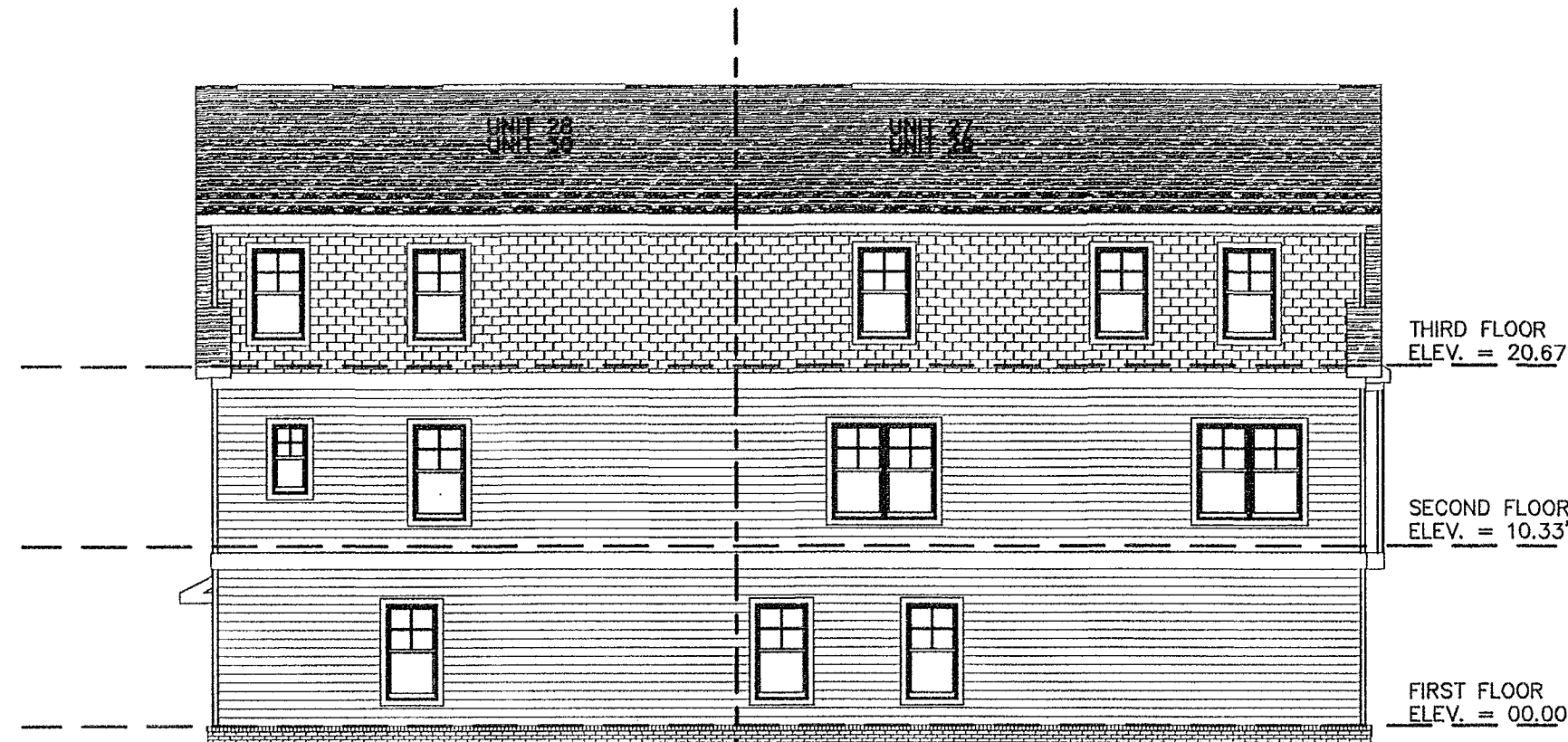
DAVIS & ASSOCIATES, P.C.
 LAND SURVEYORS AND PLANNERS
 3630 GEORGE WASHINGTON MEMORIAL HIGHWAY
 YORKTOWN, VIRGINIA 23693
 (757)867-8583



FRONT ELEVATION
 (PRIVATE LANE SIDE)



REAR ELEVATION
 (PUBLIC STREET SIDE)



LEFT SIDE ELEVATION



RIGHT SIDE ELEVATION

APPROVED
 YORK COUNTY BOARD OF SUPERVISORS
 BY: Susan Kasal
 PLAT APPROVING AGENT
 DATE: SEPTEMBER 24 2020

STATE OF VIRGINIA
 COUNTY OF YORK
 IN THE CLERK'S OFFICE OF THE YORK -
 POQUOSON CIRCUIT COURT THIS 25th
 DAY OF September 2020, THIS MAP WAS
 PRESENTED AND ADMITTED TO RECORD AS
 THE LAW DIRECTS AS INSTRUMENT # 200016280

TESTE: KRISTEN N. NELSON, CLERK
 CLERK

BY: Walter H. Heltzel, III