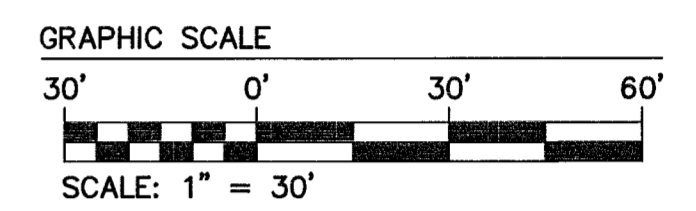


RESUBDIVISION OF  
YORKTOWN CRESCENT, PHASE 1  
AND  
PLAT OF SUBDIVISION  
YORKTOWN CRESCENT, PHASE 2

NELSON DISTRICT YORK COUNTY VIRGINIA  
Date: 07/17/2020 Scale: 1" = 30' Proj. No.: H10028-05 Proj. Contacts: MHR

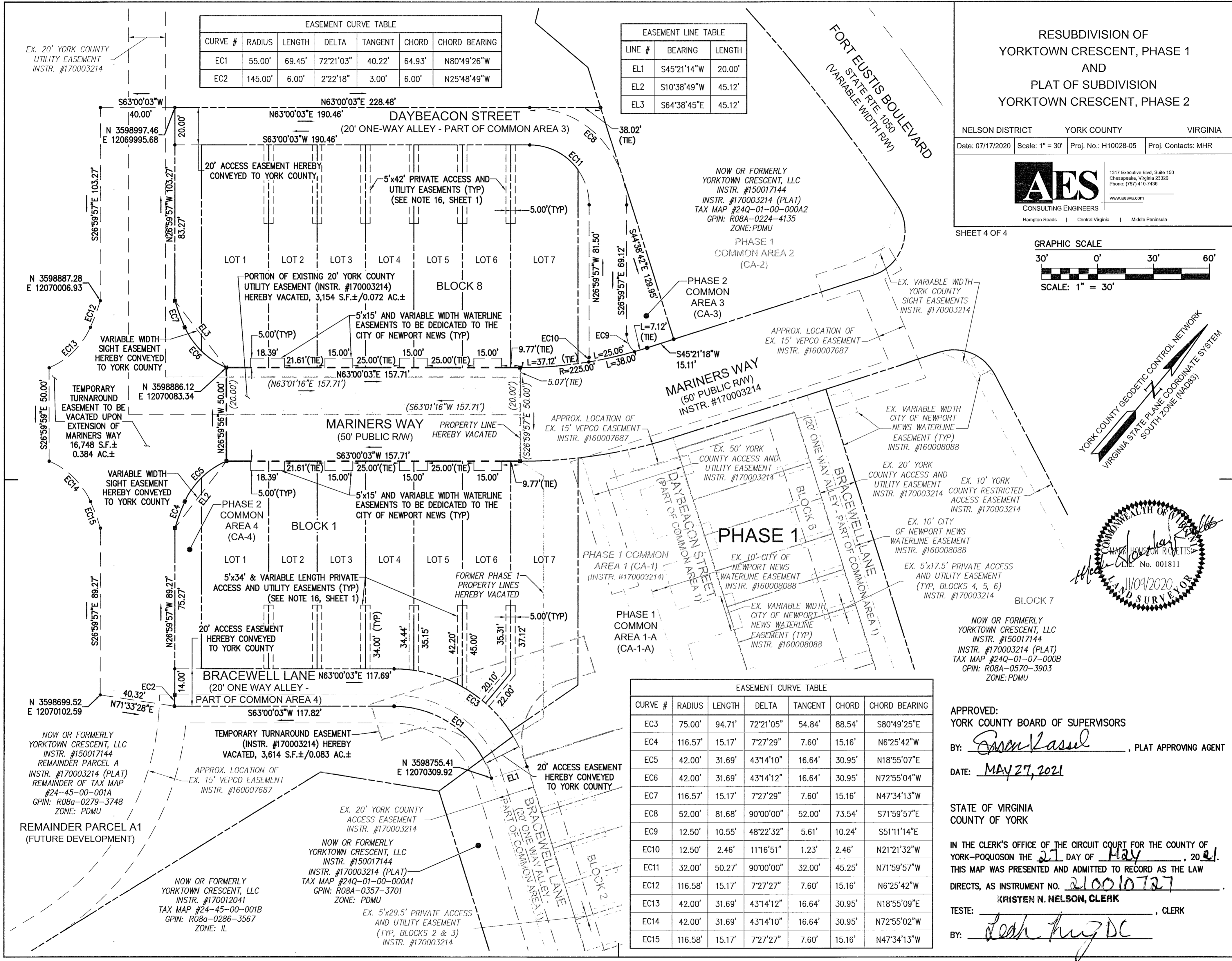


SHEET 4 OF 4



EASEMENT CURVE TABLE						
CURVE #	RADIUS	LENGTH	DELTA	TANGENT	CHORD	CHORD BEARING
EC1	55.00'	69.45'	72°21'03"	40.22'	64.93'	N80°49'26"W
EC2	145.00'	6.00'	2°22'18"	3.00'	6.00'	N25°48'49"W

EASEMENT LINE TABLE		
LINE #	BEARING	LENGTH
EL1	S45°21'14"W	20.00'
EL2	S10°38'49"W	45.12'
EL3	S64°38'45"E	45.12'



EASEMENT CURVE TABLE						
CURVE #	RADIUS	LENGTH	DELTA	TANGENT	CHORD	CHORD BEARING
EC3	75.00'	94.71'	72°21'05"	54.84'	88.54'	S80°49'25"E
EC4	116.57'	15.17'	7°27'29"	7.60'	15.16'	N6°25'42"W
EC5	42.00'	31.69'	43°14'10"	16.64'	30.95'	N18°55'07"E
EC6	42.00'	31.69'	43°14'12"	16.64'	30.95'	N72°55'04"W
EC7	116.57'	15.17'	7°27'29"	7.60'	15.16'	N47°34'13"W
EC8	52.00'	81.68'	90°00'00"	52.00'	73.54'	S71°59'57"E
EC9	12.50'	10.55'	48°22'32"	5.61'	10.24'	S51°11'14"E
EC10	12.50'	2.46'	11°16'51"	1.23'	2.46'	N21°21'32"W
EC11	32.00'	50.27'	90°00'00"	32.00'	45.25'	N71°59'57"W
EC12	116.58'	15.17'	7°27'27"	7.60'	15.16'	N6°25'42"W
EC13	42.00'	31.69'	43°14'12"	16.64'	30.95'	N18°55'09"E
EC14	42.00'	31.69'	43°14'10"	16.64'	30.95'	N72°55'02"W
EC15	116.58'	15.17'	7°27'27"	7.60'	15.16'	N47°34'13"W



APPROVED:  
YORK COUNTY BOARD OF SUPERVISORS  
BY: Erin Kasul, PLAT APPROVING AGENT  
DATE: MAY 27, 2021

STATE OF VIRGINIA  
COUNTY OF YORK  
IN THE CLERK'S OFFICE OF THE CIRCUIT COURT FOR THE COUNTY OF YORK-POQUOSON THE 27 DAY OF May, 2021.  
THIS MAP WAS PRESENTED AND ADMITTED TO RECORD AS THE LAW DIRECTS, AS INSTRUMENT NO. 210010727  
KRISTEN N. NELSON, CLERK  
TESTE: Leah Huz DC, CLERK  
BY: Leah Huz DC