

EASEMENT LEGEND

- 1 - EXISTING PRIVATE 25' DRAINAGE AND UTILITY EASEMENT FOR THE BENEFIT OF TAX PARCELS #36-00-00-022 & #36-01-00-000A [INST. # 100021723]
- 2 - EXISTING VARIABLE WIDTH PRIVATE DRAINAGE AND UTILITY EASEMENT FOR THE BENEFIT OF TAX PARCELS #36-00-00-022 & #36-01-00-000A [INST. # 140021262]
- 3 - EXISTING 35' PRIVATE INGRESS/EGRESS, DRAINAGE AND UTILITIES EASEMENT [INST. # 170020100]
- 4 - EXISTING VARIABLE WIDTH DRAINAGE EASEMENT (OVER AND THROUGH STORMWATER BASIN, BMP #'s 3 & 4) [INST. # 170020100]
- 5 - EXISTING 10' DRAINAGE EASEMENT (CENTERED ON STORM DRAIN) [INST. # 170020100]
- 6 - EXISTING VARIABLE WIDTH YORK COUNTY WETLANDS CONSERVATION EASEMENT (OVER AND ACROSS JURISDICTIONAL WETLANDS) [INST # 170019369]
- 7 - EXISTING VARIABLE WIDTH YORK COUNTY SIGHT EASEMENT [INST. # 170020100]
- 8 - EXISTING PRIVATE VARIABLE WIDTH PEDESTRIAN ACCESS ESMT. (ENCOMPASSING SIDEWALKS AND CROSSWALKS ADJACENT TO PUBLIC RIGHT-OF-WAYS) [INST. # 170020100]
- 9 - EXISTING 20' YORK COUNTY UTILITY EASEMENT [INST. # 170020100]
- 10 - 35' PRIVATE INGRESS/EGRESS, DRAINAGE AND UTILITIES EASEMENT [INST. # 200004253]
- 11 - 10' DRAINAGE EASEMENT [INST. # 200004253]
- 12 - TEMPORARY TURNAROUND EASEMENT TO BE VACATED UPON THE EXTENSION OF KEENER WAY (50' PUBLIC R/W) AND FUTURE JEANETTE DRIVE (50' PUBLIC R/W) [INST. # 200004253]
- 13 - VARIABLE WIDTH SIGHT EASEMENT [INST. # 200004253]
- 14 - VARIABLE WIDTH PRIVATE PEDESTRIAN ACCESS EASEMENT (ENCOMPASSING SIDEWALKS AND CROSSWALKS ADJACENT TO PUBLIC RIGHT-OF-WAYS) [INST. # 200004253]

LINE DATA TABLE

LINE	BEARING	DISTANCE	LINE	BEARING	DISTANCE	LINE	BEARING	DISTANCE
L1	S 72°39'25" E	133.70'	L21	N 53°35'16" W	31.67'	L41	S 24°02'52" W	51.98'
L2	S 72°48'23" E	84.27'	L22	N 58°09'12" W	16.43'	L42	S 17°22'50" W	77.64'
L3	S 80°15'53" E	47.00'	L23	N 70°19'10" W	45.15'	L43	N 74°32'39" E	12.81'
L4	S 09°44'07" W	21.36'	L24	N 53°41'27" W	20.92'	L44	S 17°22'50" W	63.00'
L5	N 80°15'53" W	137.70'	L25	N 37°32'44" W	29.12'	L45	S 17°22'50" W	135.50'
L6	S 89°53'33" W	18.04'	L26	N 30°58'10" W	41.09'			
L7	N 77°59'33" W	25.81'	L27	N 45°44'26" W	31.02'			
L8	S 87°56'28" W	30.36'	L28	N 66°46'38" W	27.01'			
L9	N 65°46'22" W	18.49'	L29	N 82°01'05" W	18.77'			
L10	N 05°40'01" W	15.07'	L30	S 81°06'07" W	14.28'			
L11	N 74°07'36" W	18.60'	L31	N 15°51'41" W	18.60'			
L12	N 03°25'42" W	25.44'	L32	N 48°14'33" E	15.30'			
L13	S 81°10'18" W	28.53'	L33	N 44°00'20" W	33.55'			
L14	S 75°00'14" W	18.28'	L34	N 04°25'12" W	15.99'			
L15	S 86°30'42" W	32.79'	L35	N 35°13'01" E	34.53'			
L16	S 60°36'03" W	22.47'	L36	N 36°58'28" W	22.16'			
L17	S 31°51'48" W	29.55'	L37	N 03°24'00" E	27.42'			
L18	S 31°37'48" W	27.80'	L38	N 14°01'34" E	7.71'			
L19	S 43°12'44" W	28.96'	L39	N 72°37'10" W	80.00'			
L20	S 80°46'12" W	28.58'	L40	S 78°14'24" W	24.16'			

CURVE DATA TABLE

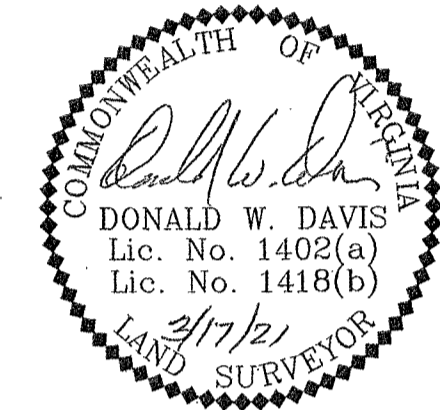
NUMBER	DELTA ANGLE	RADIUS	ARC LENGTH	CHORD LENGTH	CHORD DIRECTION
C1	57°09'49"	54.50'	54.37'	52.15'	S 44°02'15" E
C2	47°16'53"	24.50'	20.22'	19.65'	S 41°01'17" W
C3	90°00'00"	24.00'	37.70'	33.94'	S 27°37'10" E
C4	90°00'00"	24.00'	37.70'	33.94'	N 62°22'50" E
C5	47°16'53"	24.50'	20.22'	19.65'	N 06°15'36" W
C6	47°16'53"	24.50'	20.22'	19.65'	S 41°01'17" W
C7	90°00'00"	50.00'	78.54'	70.71'	S 62°22'50" W

CONDOMINIUM PLAT
OF
PHASE TWENTY THREE
MAINSTAY AT
COMMONWEALTH GREEN
SECTION TWO

BETHEL MAGISTERIAL DISTRICT
COUNTY OF YORK, VIRGINIA

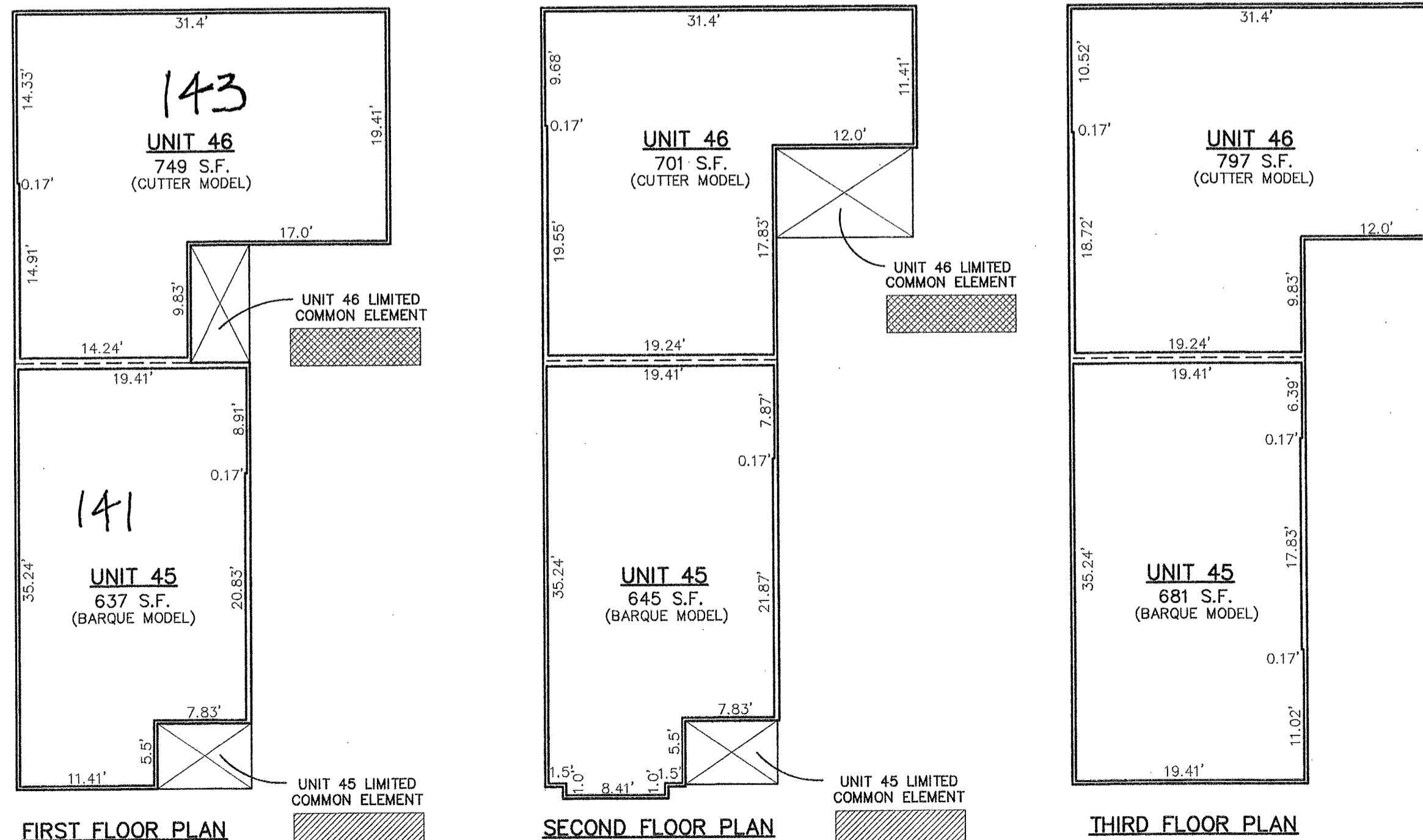
SCALE: 1"=10' DATE: MARCH 17, 2021
SHEET 5 OF 6

DAVIS & ASSOCIATES, P.C.
LAND SURVEYORS AND PLANNERS
3630 GEORGE WASHINGTON MEMORIAL HIGHWAY
YORKTOWN, VIRGINIA 23693
(757)867-8583



PHASE TWENTY THREE - BUILDING THIRTY TWO DETAIL (UNITS 45 & 46)

DIMENSIONS REFLECT INTERIOR FRAME LINE



- SYMBOLS -

- DENOTES LIMITED COMMON ELEMENT - UNITS 45
- DENOTES LIMITED COMMON ELEMENT - UNITS 46

APPROVED
YORK COUNTY BOARD OF SUPERVISORS

BY: Sharon Kasal
PLAT APPROVING AGENT

DATE: JUNE 16, 2021

STATE OF VIRGINIA
COUNTY OF YORK
IN THE CLERK'S OFFICE OF THE YORK
POQUOSON CIRCUIT COURT THIS 21st
DAY OF June 2021, THIS MAP WAS
PRESENTED AND ADMITTED TO RECORD AS
THE LAW DIRECTS AS INSTRUMENT # 210013409

TESTE: Kristen N. Nelson
CLERK

BY: Maellene M. Holt, Jr.