

EASEMENT LEGEND

- 1 - EXISTING PRIVATE 25' DRAINAGE AND UTILITY EASEMENT FOR THE BENEFIT OF TAX PARCELS #36-00-00-022 & #36-01-00-000A [INST. # 100021723]
- 2 - EXISTING VARIABLE WIDTH PRIVATE DRAINAGE AND UTILITY EASEMENT FOR THE BENEFIT OF TAX PARCELS #36-00-00-022 & #36-01-00-000A [INST. # 140021262]
- 3 - EXISTING 35' PRIVATE INGRESS/EGRESS, DRAINAGE AND UTILITIES EASEMENT [INST. # 170020100]
- 4 - EXISTING VARIABLE WIDTH DRAINAGE EASEMENT (OVER AND THROUGH STORMWATER BASIN, BMP #'s 3 & 4) [INST. # 170020100]
- 5 - EXISTING 10' DRAINAGE EASEMENT (CENTERED ON STORM DRAIN) [INST. # 170020100]
- 6 - EXISTING VARIABLE WIDTH YORK COUNTY WETLANDS CONSERVATION EASEMENT (OVER AND ACROSS JURISDICTIONAL WETLANDS) [INST # 170019369]
- 7 - EXISTING VARIABLE WIDTH YORK COUNTY SIGHT EASEMENT [INST. # 170020100]
- 8 - EXISTING PRIVATE VARIABLE WIDTH PEDESTRIAN ACCESS ESMT. (ENCOMPASSING SIDEWALKS AND CROSSWALKS ADJACENT TO PUBLIC RIGHT-OF-WAYS) [INST. # 170020100]
- 9 - EXISTING 20' YORK COUNTY UTILITY EASEMENT [INST. # 170020100]
- 10 - 35' PRIVATE INGRESS/EGRESS, DRAINAGE AND UTILITIES EASEMENT [INST. # 200004253]
- 11 - 10' DRAINAGE EASEMENT [INST. # 200004253]
- 12 - TEMPORARY TURNAROUND EASEMENT TO BE VACATED UPON THE EXTENSION OF KEENER WAY (50' PUBLIC R/W) AND FUTURE JEANETTE DRIVE (50' PUBLIC R/W) [INST. # 200004253]
- 13 - VARIABLE WIDTH SIGHT EASEMENT [INST. # 200004253]
- 14 - VARIABLE WIDTH PRIVATE PEDESTRIAN ACCESS EASEMENT (ENCOMPASSING SIDEWALKS AND CROSSWALKS ADJACENT TO PUBLIC) RIGHT-OF-WAYS) [INST. # 200004253]

LINE DATA TABLE

LINE	BEARING	DISTANCE	LINE	BEARING	DISTANCE	LINE	BEARING	DISTANCE
L1	S 72°39'25" E	133.70'	L21	N 53°35'16" W	31.67'	L41	S 24°02'52" W	51.98'
L2	S 72°48'23" E	84.27'	L22	N 58°09'12" W	16.43'	L42	S 17°22'50" W	77.64'
L3	S 80°15'53" E	47.00'	L23	N 70°19'10" W	45.15'	L43	N 74°32'39" E	12.81'
L4	S 09°44'07" W	21.36'	L24	N 53°41'27" W	20.92'	L44	S 17°22'50" W	63.00'
L5	N 80°15'53" W	137.70'	L25	N 37°32'44" W	29.12'	L45	S 17°22'50" W	135.50'
L6	S 89°53'33" W	18.04'	L26	N 30°58'10" W	41.09'	L46	N 17°22'50" E	112.55'
L7	N 77°59'33" W	25.81'	L27	N 45°44'26" W	31.02'	L47	S 17°22'50" W	126.52'
L8	S 87°56'28" W	30.36'	L28	N 66°46'38" W	27.01'			
L9	N 65°46'22" W	18.49'	L29	N 82°01'05" W	18.77'			
L10	N 05°40'01" W	15.07'	L30	S 81°06'07" W	14.28'			
L11	N 74°07'36" W	18.60'	L31	N 15°51'41" W	18.60'			
L12	N 03°25'42" W	25.44'	L32	N 48°14'33" E	15.30'			
L13	S 81°10'18" W	28.53'	L33	N 44°00'20" W	33.55'			
L14	S 75°00'14" W	18.28'	L34	N 04°25'12" W	15.99'			
L15	S 86°30'42" W	32.79'	L35	N 35°13'01" E	34.53'			
L16	S 60°36'03" W	22.47'	L36	N 36°58'28" W	22.16'			
L17	S 31°51'48" W	29.55'	L37	N 03°24'00" E	27.42'			
L18	S 31°37'48" W	27.80'	L38	N 14°01'34" E	7.71'			
L19	S 43°12'44" W	28.96'	L39	N 72°37'10" W	80.00'			
L20	S 80°46'12" W	28.58'	L40	S 78°14'24" W	24.16'			

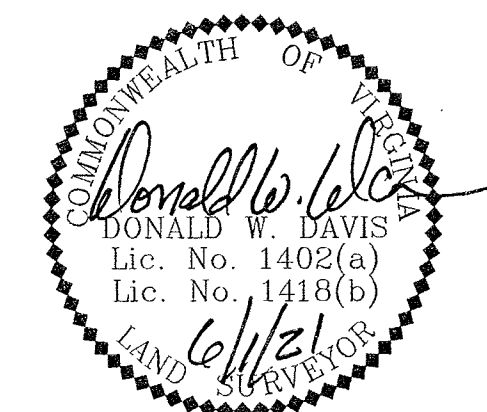
CURVE DATA TABLE

NUMBER	DELTA ANGLE	RADIUS	ARC LENGTH	CHORD LENGTH	CHORD DIRECTION
C1	57°09'49"	54.50'	54.37'	52.15'	S 44°02'15" E
C2	47°16'53"	24.50'	20.22'	19.65'	S 41°01'17" W
C3	90°00'00"	24.00'	37.70'	33.94'	S 27°37'10" E
C4	90°00'00"	24.00'	37.70'	33.94'	N 62°22'50" E
C5	47°16'53"	24.50'	20.22'	19.65'	N 06°15'36" W
C6	47°16'53"	24.50'	20.22'	19.65'	S 41°01'17" W
C7	90°00'00"	50.00'	78.54'	70.71'	S 62°22'50" W

CONDOMINIUM PLAT  
OF  
PHASE TWENTY FOUR  
AND  
PHASE TWENTY FIVE  
MAINSTAY AT  
COMMONWEALTH GREEN  
SECTION TWO

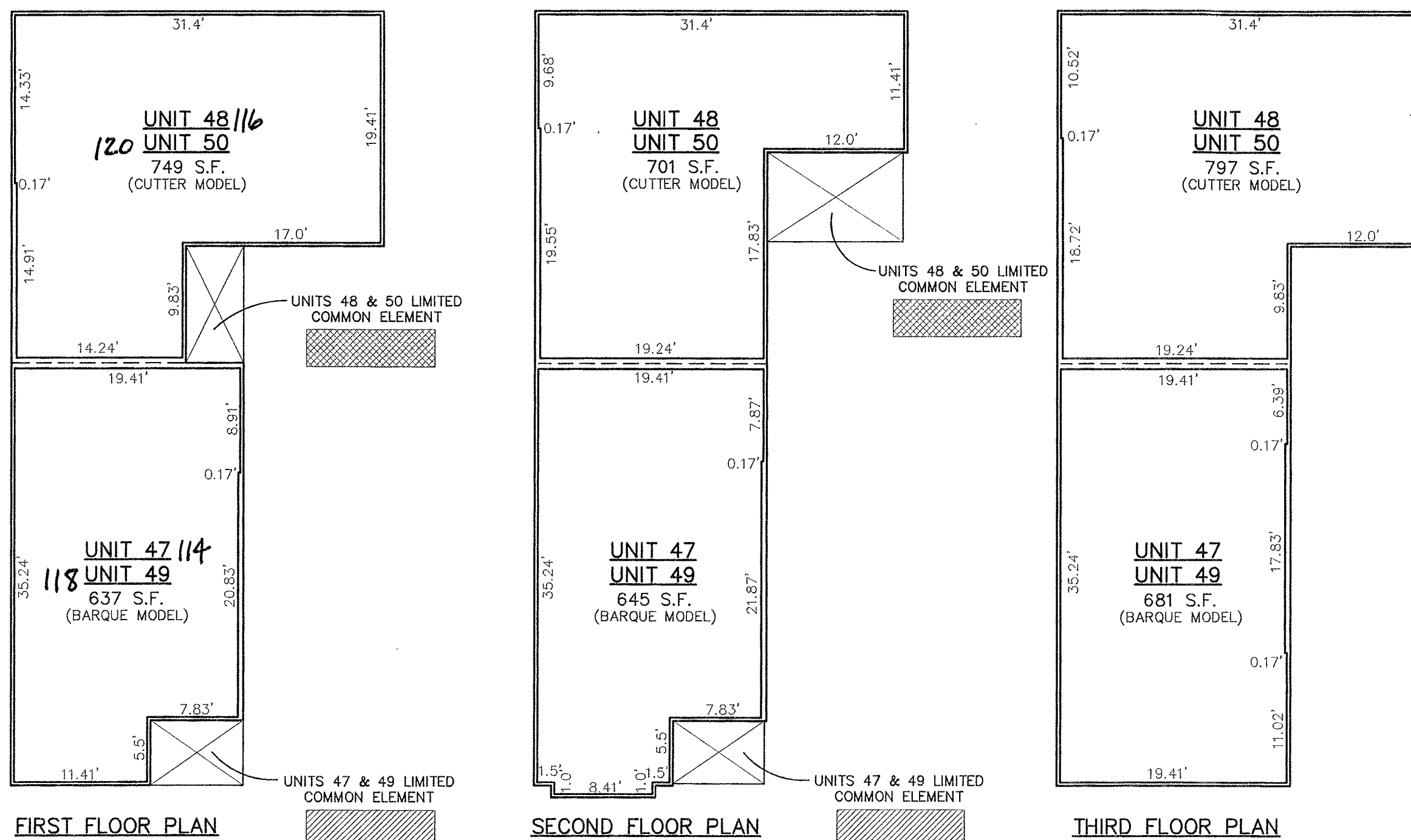
BETHEL MAGISTERIAL DISTRICT  
COUNTY OF YORK, VIRGINIA  
SCALE: 1"=40' DATE: JUNE 1, 2021  
SHEET 5 OF 6

DAVIS & ASSOCIATES, P.C.  
LAND SURVEYORS AND PLANNERS  
3630 GEORGE WASHINGTON MEMORIAL HIGHWAY  
YORKTOWN, VIRGINIA 23693  
(757)867-8583



PHASE TWENTY FOUR - BUILDING SEVENTEEN DETAIL (UNITS 47 & 48)  
PHASE TWENTY FIVE - BUILDING EIGHTEEN DETAIL (UNITS 49 & 50)

DIMENSIONS REFLECT INTERIOR FRAME LINE



- SYMBOLS -

- DENOTES LIMITED COMMON ELEMENT - UNITS 47 & 49
- DENOTES LIMITED COMMON ELEMENT - UNITS 48 & 50

APPROVED  
YORK COUNTY BOARD OF SUPERVISORS  
BY: Shawn Kaul  
PLAT APPROVING AGENT  
DATE: JULY 22, 2021

STATE OF VIRGINIA  
COUNTY OF YORK  
IN THE CLERK'S OFFICE OF THE YORK  
POQUOSON CIRCUIT COURT THIS 23rd  
DAY OF July 2021, THIS MAP WAS  
PRESENTED AND ADMITTED TO RECORD AS  
THE LAW DIRECTS AS INSTRUMENT # 210015202  
TESTE: Kristen M. Nelson  
CLERK  
BY: Charlene L. Underwood