

COMPOSITE PLAT SHOWING  
PROPERTY LINE VACATION  
BETWEEN THE PROPERTIES OF  
THE COUNTY OF YORK, VIRGINIA  
PARCEL'S A & B

Nelson District York County, VA

SHEET 2 OF 2

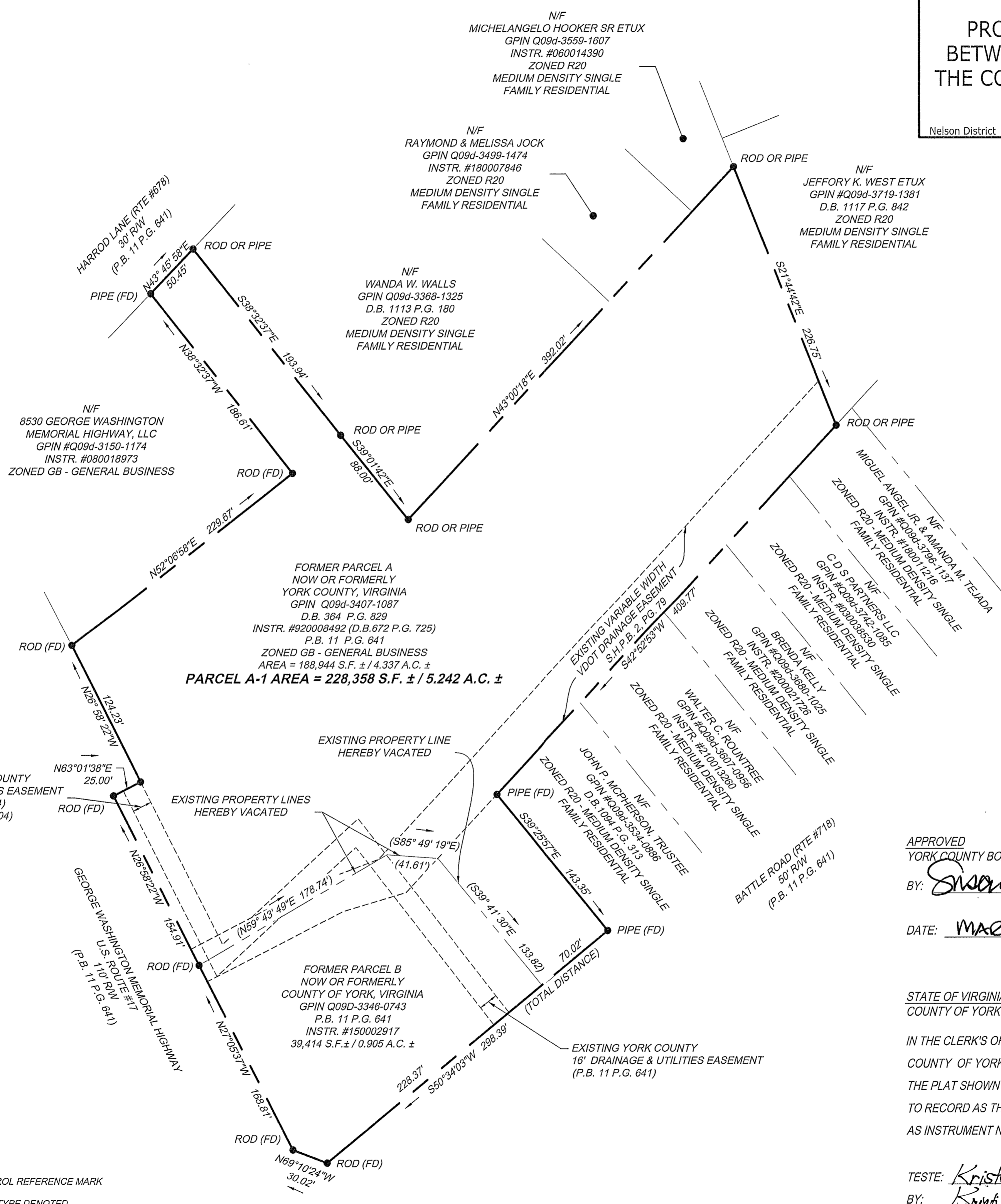
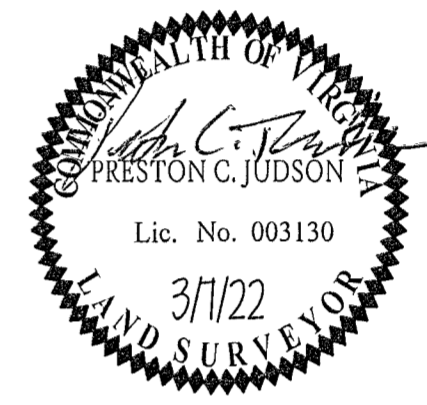
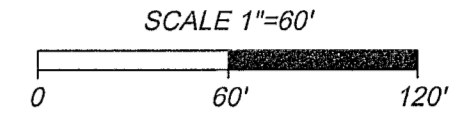
DATE: 2/10/2022  
J.N.: 41687.002  
DRAWN BY: MJL  
CHECK BY: PCJ

THIS DRAWING PREPARED AT THE  
HAMPTON ROADS PENINSULA OFFICE  
11832 Rock Landing Drive, Suite 306 | Newport News, VA 23606  
TEL 757.752.3041 FAX 757.340.1415 www.timmons.com

YOUR VISION ACHIEVED THROUGH OURS.  
Site Development Residential Infrastructure Technology

TIMMONS GROUP

P.B. 11 P.G. 641



PARCEL A-1 AREA = 228,358 S.F. ± / 5.242 A.C. ±

FORMER PARCEL B  
NOW OR FORMERLY  
COUNTY OF YORK, VIRGINIA  
GPIN Q09D-3346-0743  
P.B. 11 P.G. 641  
INSTR. #150002917  
39,414 S.F. ± / 0.905 A.C. ±

APPROVED  
YORK COUNTY BOARD OF SUPERVISORS  
BY: *Simon Kassel*  
PLAT APPROVING AGENT

DATE: MARCH 31, 2022

STATE OF VIRGINIA  
COUNTY OF YORK  
IN THE CLERK'S OFFICE OF THE CIRCUIT COURT FOR THE  
COUNTY OF YORK-POQUOSON THIS 10<sup>th</sup> DAY OF April, 2022.  
THE PLAT SHOWN HEREON WAS PRESENTED AND ADMITTED  
TO RECORD AS THE LAW DIRECTS @ 8:56 AM/PM,  
AS INSTRUMENT NO. 220005338

TESTE: *Kristen N. Nelson* CLERK  
BY: *Kristi Kuhnley, DC*

LEGEND

- PROPERTY LINE
- EASEMENT LINE
- FOUND
- YORK COUNTY CONTROL REFERENCE MARK
- PROPERTY CORNER TYPE DENOTED