

CURVE TABLE						
CURVE #	DELTA	RADIUS	LENGTH	TANGENT	CHORD	CHORD BEARING
C1	257°24'40"	55.50'	249.34'		86.62'	S25°57'08"E
C2	77°24'41"	22.50'	30.40'	18.03'	28.14'	S64°02'51"W
C3	25°00'00"	4.50'	1.96'	1.00'	1.95'	N12°50'31"E
C4	25°00'00"	25.50'	11.13'	5.65'	11.04'	S12°50'31"W
C5	25°00'00"	25.50'	11.13'	5.65'	11.04'	N37°50'31"E
C6	25°00'00"	4.50'	1.96'	1.00'	1.95'	S37°50'31"W
C7	117°57'22"	22.50'	46.32'	37.41'	38.56'	S33°38'10"E
C8	24°24'51"	175.00'	74.57'	37.86'	74.01'	N75°10'43"E
C9	77°24'41"	22.50'	30.40'	18.03'	28.14'	N24°15'57"E
C10	257°24'41"	55.50'	249.34'		86.62'	S65°44'03"E
C11	52°22'14"	225.00'	205.66'	110.64'	198.57'	S89°09'24"W
C12	12°46'47"	225.00'	50.19'	25.20'	50.08'	N58°16'06"W
C13	79°18'43"	22.50'	31.15'	18.65'	28.72'	S88°27'56"W
C14	107°31'02"	22.50'	42.22'	30.70'	36.29'	S4°56'56"E
C15	5°57'02"	175.00'	18.17'	9.10'	18.17'	S61°40'58"E
C16	90°00'00"	22.50'	35.34'	22.50'	31.82'	N70°20'31"E
C17	90°00'00"	22.50'	35.34'	22.50'	31.82'	N19°39'29"W
C18	90°00'00"	22.50'	35.34'	22.50'	31.82'	S70°20'31"W
C19	90°00'00"	22.50'	35.34'	22.50'	31.82'	S19°39'29"E
C20	90°00'00"	22.50'	35.34'	22.50'	31.82'	N70°20'31"E

CURVE TABLE						
CURVE #	DELTA	RADIUS	LENGTH	TANGENT	CHORD	CHORD BEARING
C21	56°15'04"	22.50'	22.09'	12.03'	21.21'	S87°12'59"W
C22	33°44'56"	22.50'	13.25'	6.83'	13.06'	S42°12'59"W
C23	89°53'08"	55.50'	87.07'	55.39'	78.41'	S70°17'06"W
C24	95°13'44"	55.50'	92.24'	60.81'	81.99'	N17°09'28"W
C25	72°17'48"	55.50'	70.03'	40.54'	65.48'	N66°36'18"E
C26	50°31'09"	22.50'	19.84'	10.62'	19.20'	N77°29'37"E
C27	26°53'32"	22.50'	10.56'	5.38'	10.46'	N38°47'17"E
C28	40°13'08"	22.50'	15.79'	8.24'	15.47'	S42°51'43"W
C29	37°11'33"	22.50'	14.61'	7.57'	14.35'	S4°09'22"W
C30	76°47'44"	55.50'	74.39'	43.99'	68.94'	S23°57'28"W
C31	43°41'05"	55.50'	42.32'	22.25'	41.30'	S84°11'53"W
C32	43°41'05"	55.50'	42.32'	22.25'	41.30'	N52°07'01"W
C33	45°29'58"	55.50'	44.07'	23.27'	42.92'	N7°31'29"W
C34	41°46'45"	55.50'	40.47'	21.18'	39.58'	N36°06'52"E
C35	5°58'03"	55.50'	5.78'	2.89'	5.78'	N59°59'16"E
C36	13°26'12"	225.00'	52.77'	26.50'	52.65'	N69°41'23"E
C37	15°34'53"	225.00'	61.19'	30.78'	61.00'	N84°11'56"E
C38	15°34'53"	225.00'	61.19'	30.78'	61.00'	S80°13'11"E
C39	7°46'15"	225.00'	30.52'	15.28'	30.49'	S68°32'37"E
C40	59°46'20"	22.50'	23.47'	12.93'	22.42'	N18°55'25"E


CURVE TABLE						
CURVE #	DELTA	RADIUS	LENGTH	TANGENT	CHORD	CHORD BEARING
C41	47°44'42"	22.50'	18.75'	9.96'	18.21'	N34°50'06"W
C42	56°15'04"	22.50'	22.09'	12.03'	21.21'	S87°12'59"W
C43	33°44'56"	22.50'	13.25'	6.83'	13.06'	S42°12'59"W
C44	33°44'56"	22.50'	13.25'	6.83'	13.06'	S8°28'03"W
C45	56°15'04"	22.50'	22.09'	12.03'	21.21'	S36°31'57"E
C46	89°59'59"	22.50'	35.34'	22.50'	31.82'	N70°20'31"E
C47	33°44'56"	22.50'	13.25'	6.83'	13.06'	N42°12'59"E
C48	56°15'04"	22.50'	22.09'	12.03'	21.21'	N36°31'57"W
C49	33°44'56"	22.50'	13.25'	6.83'	13.06'	N8°28'03"E

LINE TABLE		
LINE	BEARING	LENGTH
L1	N1°55'40"W	23.59'
L2	S62°58'17"W	551.65'
L3	N14°25'41"W	134.88'
L4	N86°38'15"E	311.53'
L5	S29°20'53"E	136.30'
L6	S64°39'29"E	61.00'
L7	N33°38'10"W	12.96'
L8	S78°07'56"W	157.07'
L9	S62°18'18"W	54.30'

**PLAT OF SUBDIVISION
VICTORY AT TABB**

BETHEL DISTRICT
YORK COUNTY, VIRGINIA

Date: 1/10/2022 | Scale: NOTED | Proj. No.: W10307-01 | Proj. Contacts: SJB/AMR

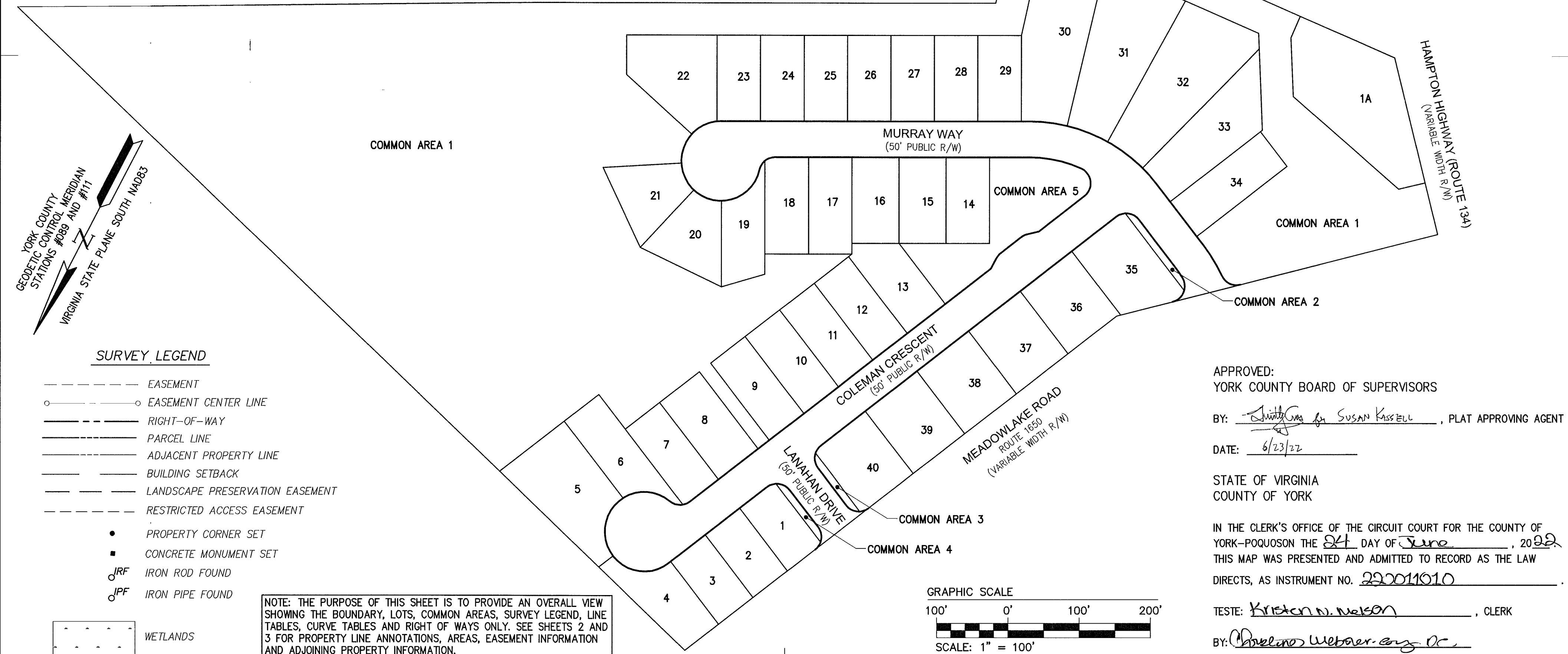
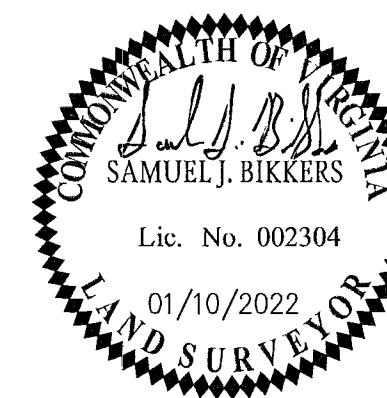


AES
CONSULTING ENGINEERS

Hampton Roads | Central Virginia | Middle Peninsula

5248 Old Towne Road, Suite 1
Williamsburg, Virginia 23188
Phone: (757) 253-0040
Fax: (757) 220-8994
www.aesva.com

SHEET 4 OF 4



APPROVED:
YORK COUNTY BOARD OF SUPERVISORS

BY: Susan Kassel for SUSAN KASSELL, PLAT APPROVING AGENT

DATE: 6/23/22

STATE OF VIRGINIA
COUNTY OF YORK

IN THE CLERK'S OFFICE OF THE CIRCUIT COURT FOR THE COUNTY OF YORK-POQUOSON THE 24 DAY OF June, 2022.
THIS MAP WAS PRESENTED AND ADMITTED TO RECORD AS THE LAW DIRECTS, AS INSTRUMENT NO. 22001010.

TESTE: Kristen N. Nelson, CLERK

BY: Charles Weber, Eng. Dr.