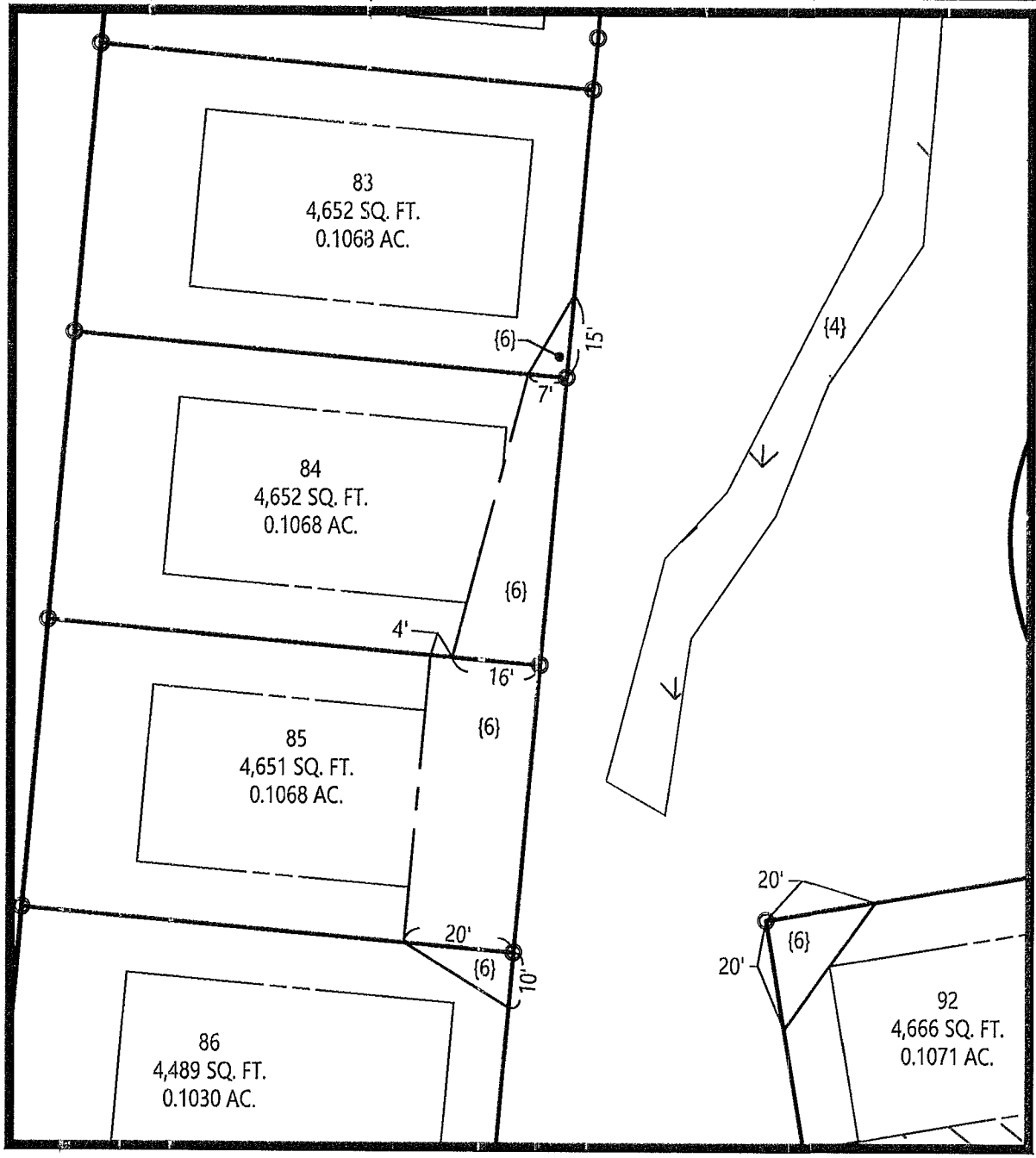
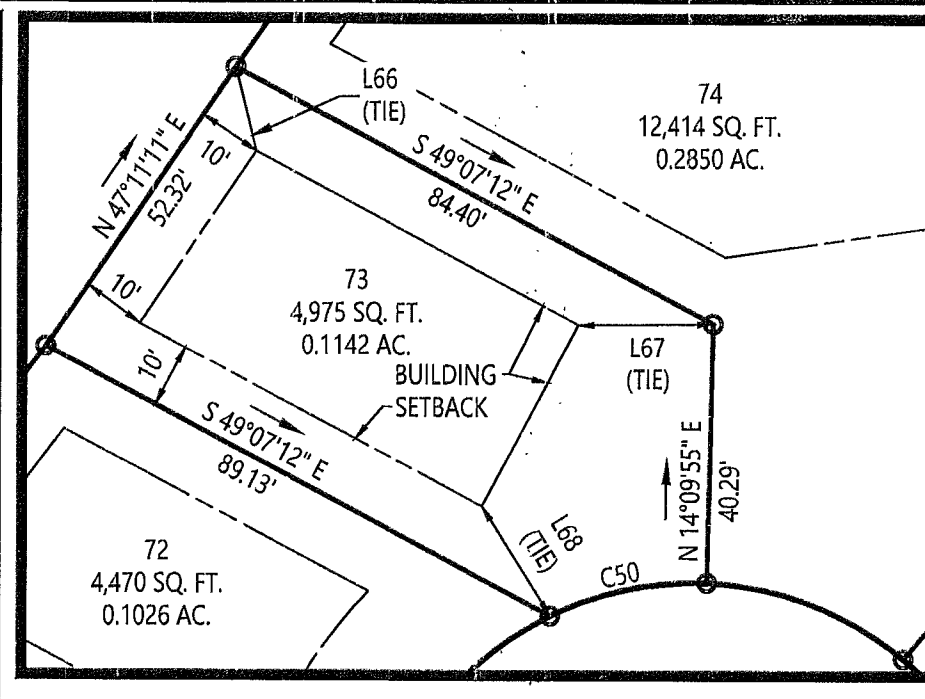


INSET 1
1" = 30'

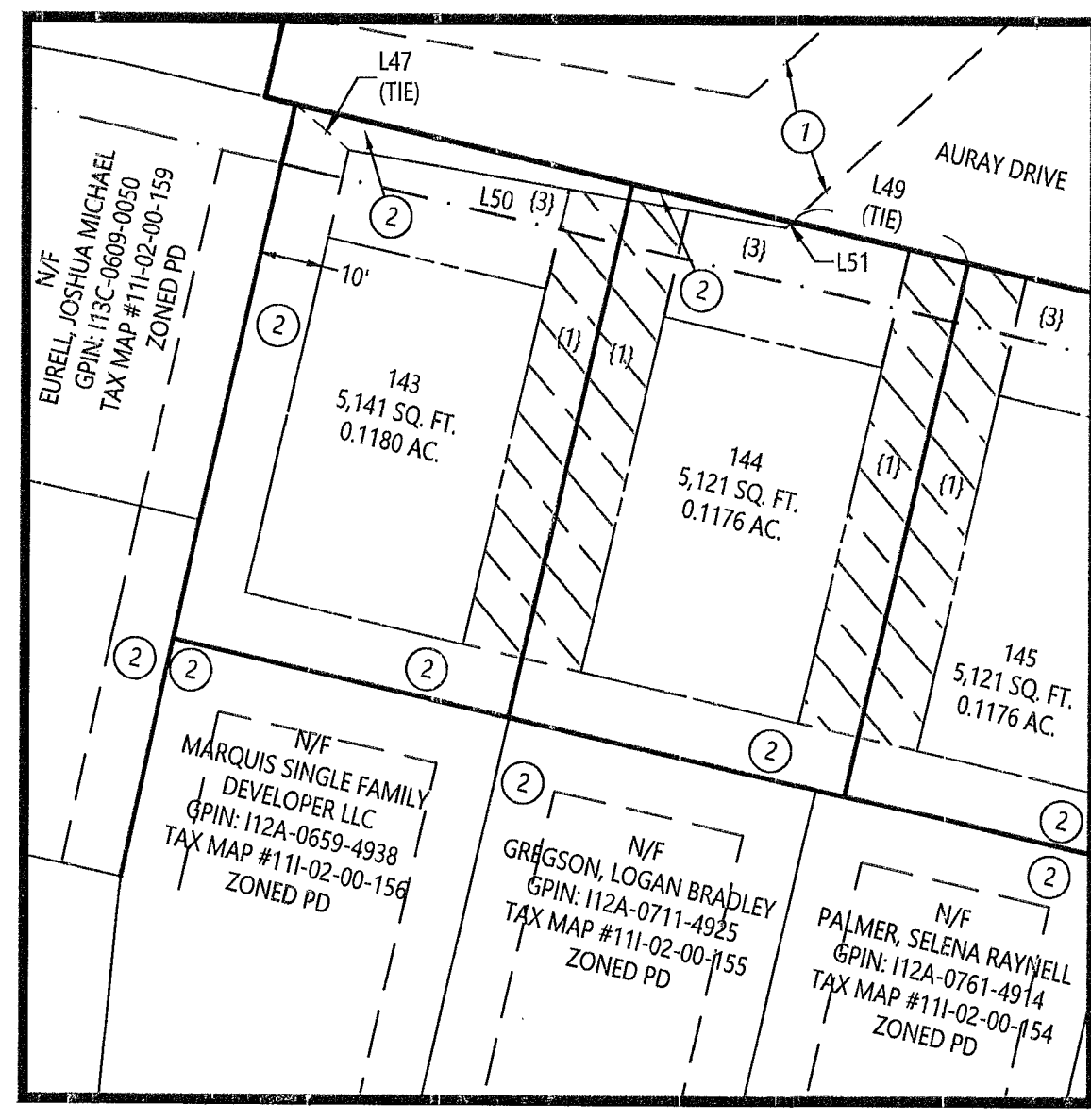


INSET 2
1" = 30'



INSET 3
1" = 30'

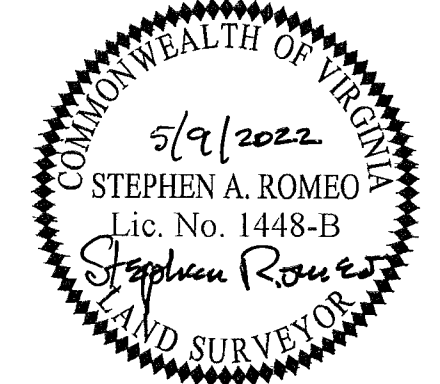
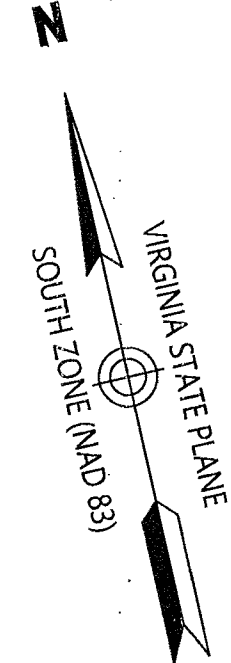
- ① PORTION OF EXISTING MARQUIS HILLS HOMEOWNERS ASSOCIATION, INC DRAINAGE EASEMENT INST. NO. 200010534 HEREBY EXTINGUISHED
- ② EXISTING MARQUIS HILLS HOMEOWNERS ASSOCIATION, INC DRAINAGE EASEMENT INST. NO. 200010534



INSET 4
1" = 30'

MARQUIS HILLS PHASE 3
BEING A
RESUBDIVISION OF PARCEL 12A
PROPERTY OF
MARQUIS SINGLE FAMILY
DEVELOPER, LLC.
BRUTON DISTRICT, YORK COUNTY, VIRGINIA
DATE: 5/9/2022
SHEET 14 OF 15

- LEGEND
- ☐ CONCRETE MONUMENT TO BE SET
 - IRON ROD TO BE SET
 - ▲— CENTERLINE ROAD
 - PROPERTY LINE
 - BUILDING SETBACK LINE
 - FLOOD ZONE
 - ▨— WETLAND LINE
 - RPA LIMITS
 - LANDSCAPE EASEMENT LINE
 - ▨ (diagonal lines) ① DRAINAGE EASEMENT HEREBY CONVEYED TO THE MARQUIS HILLS HOMEOWNERS' ASSOCIATION, INC.
 - ▨ (diagonal lines) ② 10' RESTRICTED ACCESS EASEMENT HEREBY CONVEYED TO YORK COUNTY
 - ▨ (diagonal lines) ③ 10' LANDSCAPE PRESERVATION EASEMENT HEREBY CONVEYED TO YORK COUNTY
 - ▨ (diagonal lines) ④ WETLAND CONSERVATION EASEMENT HEREBY CONVEYED TO YORK COUNTY
 - ▨ (diagonal lines) ⑤ VARIABLE WIDTH SIGHT EASEMENT HEREBY CONVEYED TO YORK COUNTY
 - ▨ (diagonal lines) ⑥ VARIABLE WIDTH RETAINING WALL MAINTENANCE EASEMENT HEREBY CONVEYED TO THE MARQUIS HILLS HOMEOWNERS' ASSOCIATION, INC. (NO EXCAVATION OR GRADE ALTERATION PERMITTED)
 - ▨ (diagonal lines) ⑦ 20' SEWER EASEMENT HEREBY CONVEYED TO YORK COUNTY SEE SHEET 15



vhb Transportation
Land Development
Environmental Services

351 McLaws Circle, Suite 3
Williamsburg, Virginia 23185
757 220 0500 • FAX 757 903 2794

APPROVED:
YORK COUNTY BOARD OF SUPERVISORS

BY: *[Signature]*
PLAT APPROVING AGENT

DATE: July 27, 2022

STATE OF VIRGINIA, COUNTY OF YORK
IN THE CLERK'S OFFICE OF THE CIRCUIT COURT FOR THE
COUNTY OF YORK-POQUOSON THE 28 DAY OF
July 2022, THIS MAP WAS PRESENTED AND
ADMITTED TO RECORD AS THE LAW DIRECTS AS
INSTRUMENT NO. 220013159

TESTE:
CLERK *[Signature]*

BY: *[Signature]*

