

PLAT OF SUBDIVISION
WALLER MILL HEIGHTS
PHASE 1A AND PHASE 1B

BRUTON DISTRICT
YORK COUNTY, VIRGINIA

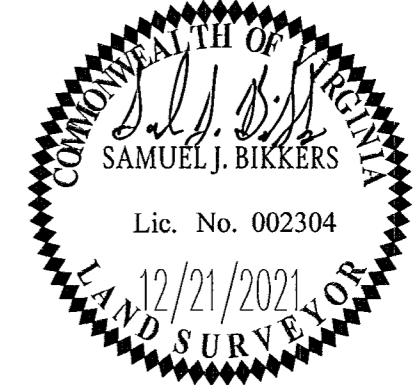
Date: 12/21/21 Scale: 1"=50' Proj. No.: 9654-05 Proj. Contacts: PET/SJB



5248 Olde Towne Road, Suite 1
Williamsburg, Virginia 23188
Phone: (757) 253-0040
Fax: (757) 220-8994
www.aesva.com

Hampton Roads | Central Virginia | Middle Peninsula

SHEET 6 OF 8



SEE SHEET 8 FOR SURVEY LEGEND AND CURVE AND LINE TABLES.

EASEMENT LEGEND

- 1 VARIABLE WIDTH WATERLINE EASEMENT TO BE DEDICATED TO THE CITY OF NEWPORT NEWS
- 2 10' LANDSCAPE PRESERVATION EASEMENT HEREBY CONVEYED TO YORK COUNTY
- 3 VARIABLE WIDTH DRAINAGE EASEMENT HEREBY DEDICATED TO PUBLIC USE
- 4 5' WIDE UTILITY EASEMENT HEREBY CONVEYED TO YORK COUNTY AND PEDESTRIAN ACCESS EASEMENT HEREBY CONVEYED TO THE WALLER MILL HEIGHTS HOMEOWNERS ASSOCIATION
- 5 20' WIDE DRAINAGE EASEMENT HEREBY CONVEYED TO THE WALLER MILL HEIGHTS HOMEOWNERS ASSOCIATION
- 6 15' WIDE DRAINAGE EASEMENT HEREBY CONVEYED TO THE WALLER MILL HEIGHTS HOMEOWNERS ASSOCIATION
- 7 10' WIDE DRAINAGE EASEMENT HEREBY CONVEYED TO THE WALLER MILL HEIGHTS HOMEOWNERS ASSOCIATION
- 8 10' RESTRICTED ACCESS EASEMENT HEREBY CONVEYED TO YORK COUNTY
- 9 5' WIDE SHARED UTILITY EASEMENT TO BE DEDICATED TO THE CITY OF WILLIAMSBURG.
5' WIDE SHARED UTILITY EASEMENT HEREBY CONVEYED TO YORK COUNTY.
5' WIDE PEDESTRIAN ACCESS EASEMENT HEREBY CONVEYED TO THE WALLER MILL HEIGHTS HOMEOWNERS ASSOCIATION
- 10 VARIABLE WIDTH SIGHT EASEMENT HEREBY CONVEYED TO YORK COUNTY
- 11 5' WIDE DRAINAGE EASEMENT HEREBY CONVEYED TO THE WALLER MILL HEIGHTS HOMEOWNERS ASSOCIATION
- 12 VARIABLE WIDTH WETLANDS CONSERVATION EASEMENT OVER U.S. ARMY CORPS OF ENGINEERS JURISDICTIONAL NON-TIDAL WETLANDS HEREBY CONVEYED TO YORK COUNTY (AREA= 1,806 S.F.±/0.041 AC.±)

APPROVED:
BY YORK COUNTY BOARD OF SUPERVISORS

BY: [Signature] PLAT APPROVING AGENT

DATE: 9/2/22

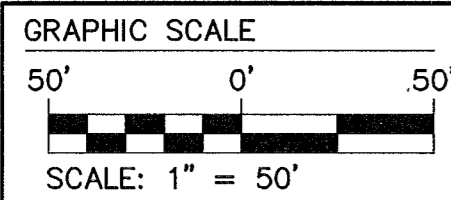
STATE OF VIRGINIA
COUNTY OF YORK

IN THE CLERK'S OFFICE OF THE CIRCUIT COURT FOR THE COUNTY OF YORK-POQUOSON, THE 10th DAY OF September, 2022

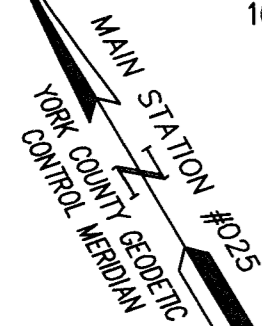
THIS MAP WAS PRESENTED AND ADMITTED TO RECORD AS THE LAW DIRECTS, AS INSTRUMENT NO. 2200 15299

TESTE: Kristen N. Nelson CLERK

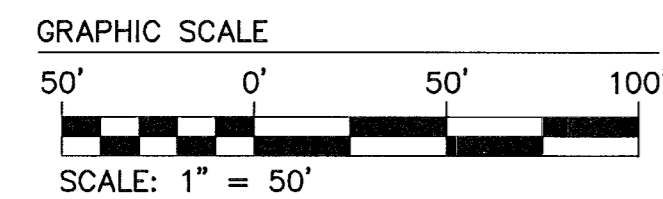
BY: Wallace M. Holt, DC



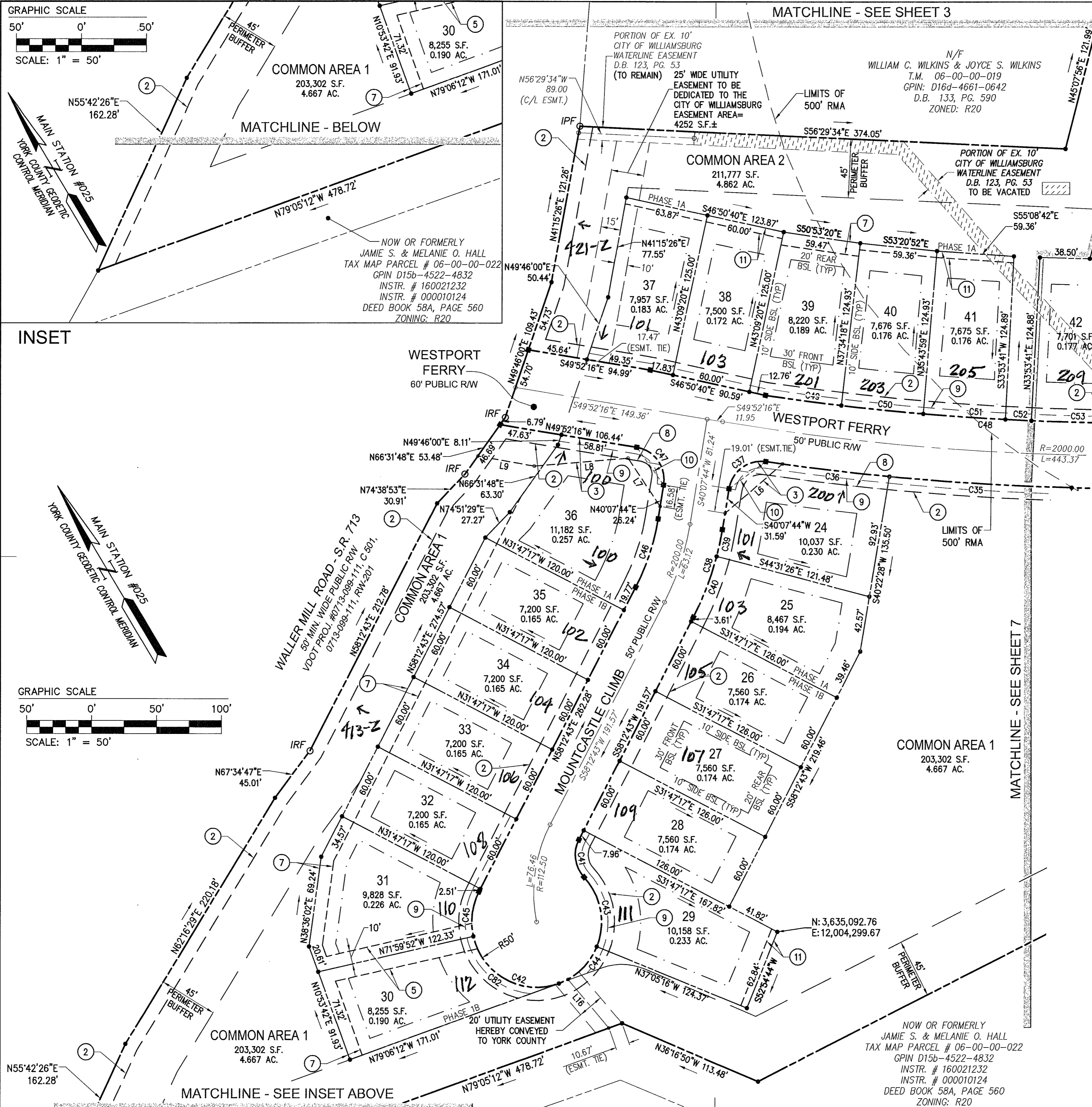
SCALE: 1" = 50'



INSET



SCALE: 1" = 50'



S:\Projects\2022\100221_100230_Plan\100221_100230_Plan.dwg, 9/17/2022, 1:07:20 PM, lmas