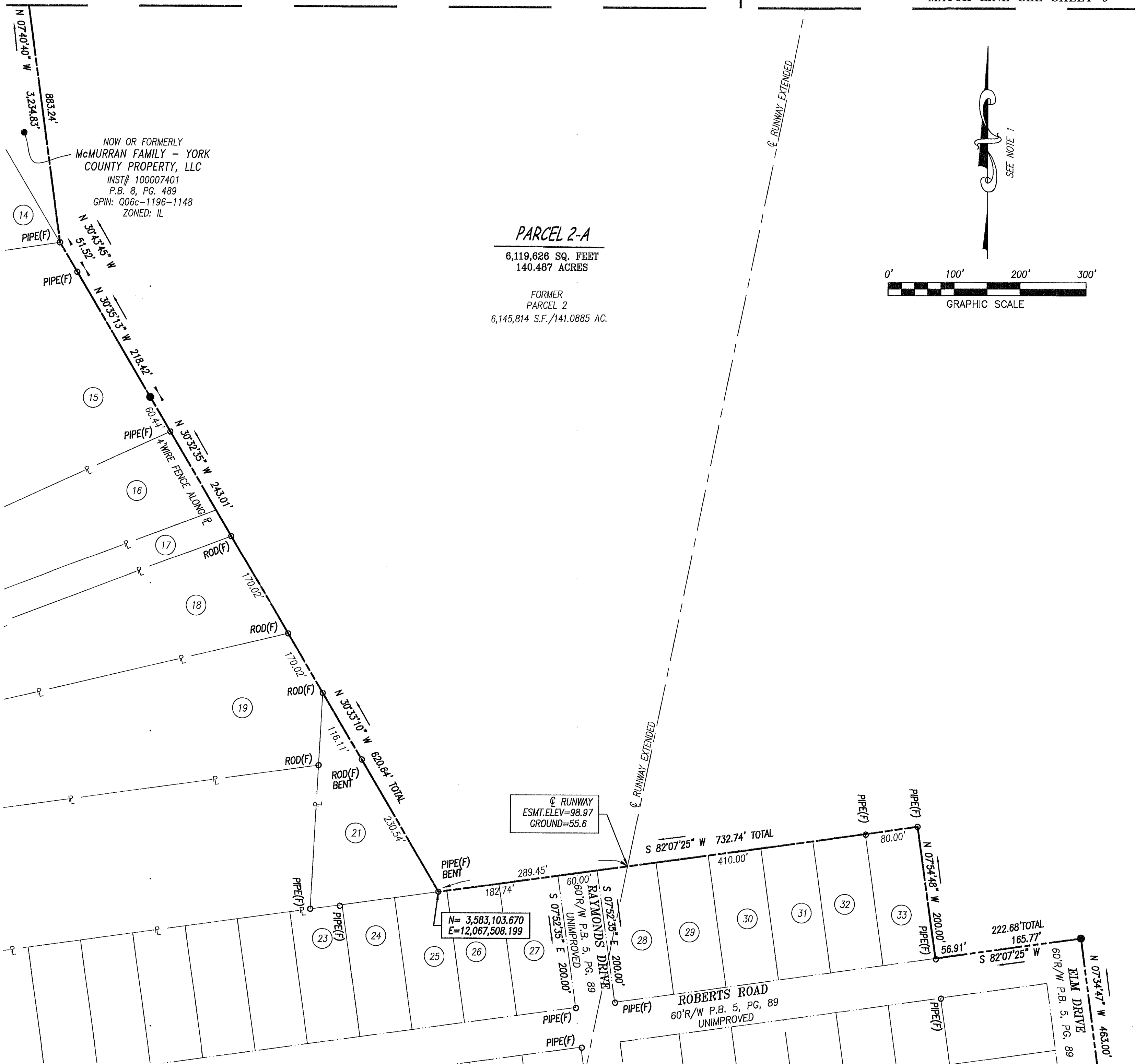


MATCH LINE SEE SHEET 8

MATCH LINE SEE SHEET 9



PLAT OF  
 BOUNDARY LINE ADJUSTMENT AND PROPERTY LINE VACATION  
 PART OF PARCEL 1A AND PART OF PARCEL 2

PROPERTY OWNED BY  
**PENINSULA AIRPORT COMMISSION**

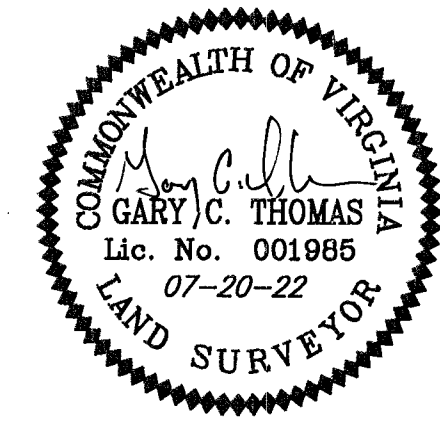
LOCATED IN  
 GRAFTON DISTRICT  
 YORK COUNTY, VIRGINIA

SCALE: 1" = 100' DATE: JULY 20, 2022  
 (SHEET 10 OF 12)

**PRECISION MEASUREMENTS, INC.**  
 SURVEYORS • GPS • 3-D SCANNING • GIS • MAPPERS  
 VIRGINIA BEACH-RICHMOND-NEWPORT NEWS-CHANTILLY, VIRGINIA  
 11835 CANON BLVD, SUITE B-103  
 NEWPORT NEWS, VIRGINIA 23606  
 TEL: (757) 595-7570

**MONUMENTS LEGEND**

	#5 REBAR SET	UNLESS OTHERWISE NOTED
	#5 REBAR FOUND	UNLESS OTHERWISE NOTED
	MON(F)	CONCRETE MONUMENT FOUND
	VDOT(F)	VDOT MONUMENT FOUND



MATCH LINE SEE SHEET 11

**APPROVED**  
 YORK COUNTY BOARD OF SUPERVISORS

BY: Susan Kassel PLAT APPROVING AGENT  
 DATE: 9/22/22

STATE OF VIRGINIA:  
 COUNTY OF YORK  
 IN THE CLERK'S OFFICE OF THE CIRCUIT COURT FOR  
 THE COUNTY OF YORK-POQUOSON, ON THIS  
 23<sup>RD</sup> DAY OF September, 2022,  
 THIS PLAT WAS PRESENTED AND ADMITTED TO RECORD  
 AS THE LAW DIRECTS, AS INSTRUMENT NUMBER  
**220016710**

TESTE KRISTEN H. NELSON, CLERK  
 CLERK  
 BY: Barbara Hutchison DEPUTY CLERK

FOR ADJOINING OWNERS  
 SEE PAGE 4.

MATCH LINE SEE SHEET 12