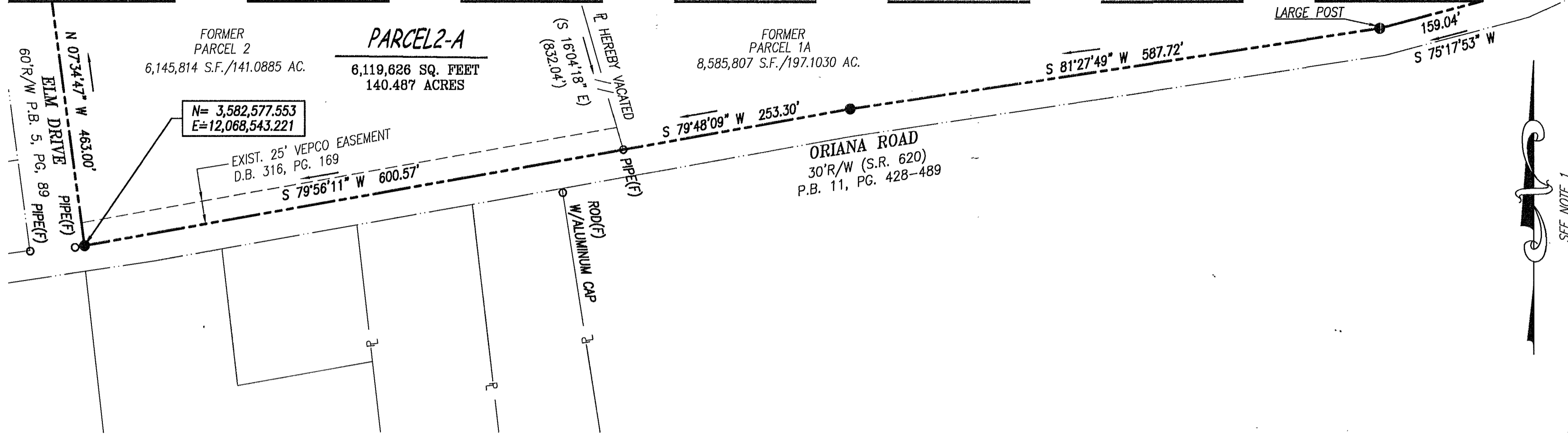


MATCH LINE SEE SHEET 10

MATCH LINE SEE SHEET 11



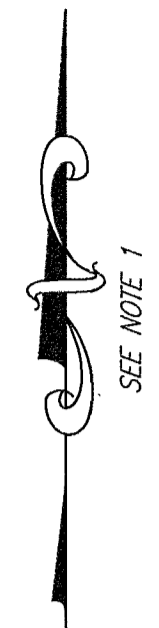
PLAT OF
BOUNDARY LINE ADJUSTMENT AND PROPERTY LINE VACATION
PART OF PARCEL 1A AND PART OF PARCEL 2

PROPERTY OWNED BY
PENINSULA AIRPORT COMMISSION

LOCATED IN
GRAFTON DISTRICT
YORK COUNTY, VIRGINIA

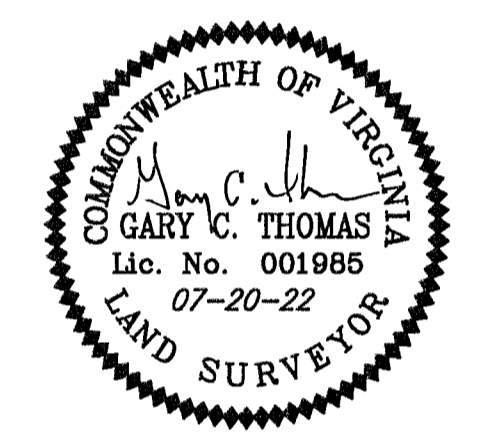
SCALE: 1" = 100' DATE: JULY 20, 2022
(SHEET 12 OF 12)

PRECISION MEASUREMENTS, INC.
SURVEYORS • GPS • 3-D SCANNING • GIS • MAPPERS
VIRGINIA BEACH—RICHMOND—NEWPORT NEWS—CHANTILLY, VIRGINIA
11835 CANON BLVD, SUITE B-103
NEWPORT NEWS, VIRGINIA 23606
TEL: (757) 595-7570



MONUMENTS LEGEND

	#5 REBAR SET	UNLESS OTHERWISE NOTED
	#5 REBAR FOUND	UNLESS OTHERWISE NOTED
	MON(F)	CONCRETE MONUMENT FOUND
	VDOT(F)	VDOT MONUMENT FOUND



APPROVED

YORK COUNTY BOARD OF SUPERVISORS

BY: *Susan Kassel* for Susan Kassel
PLAT APPROVING AGENT

DATE: 9/23/22

STATE OF VIRGINIA:
COUNTY OF YORK
IN THE CLERK'S OFFICE OF THE CIRCUIT COURT FOR
THE COUNTY OF YORK—POQUOSON, ON THIS
23rd DAY OF September, 2022,
THIS PLAT WAS PRESENTED AND ADMITTED TO RECORD
AS THE LAW DIRECTS, AS INSTRUMENT NUMBER

220016710
TESTE KRISTEN N. NELSON, CLERK
CLERK
BY: Barbara Hutchman
DEPUTY CLERK

