

PLAT OF
BOUNDARY LINE ADJUSTMENT AND PROPERTY LINE VACATION
PART OF PARCEL 1A AND PART OF PARCEL 2

PROPERTY OWNED BY

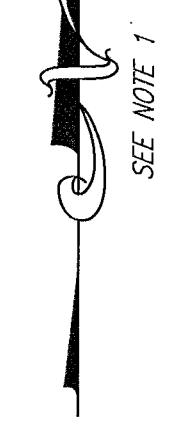
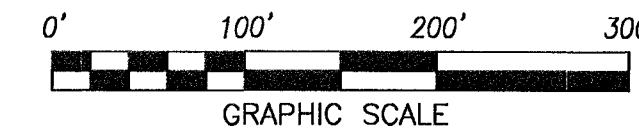
PENINSULA AIRPORT COMMISSION

LOCATED IN
GRAFTON DISTRICT
YORK COUNTY, VIRGINIA

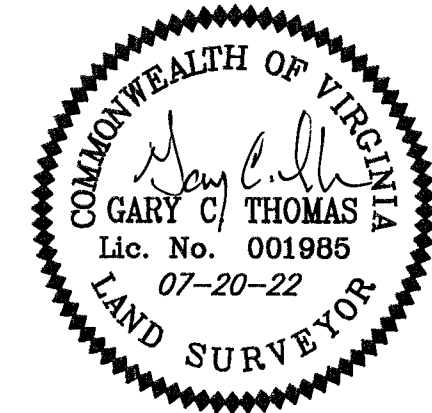
SCALE: 1" = 100' DATE: JULY 20, 2022

(SHEET 7 OF 12)

PRECISION MEASUREMENTS, INC.
SURVEYORS • GPS • 3-D SCANNING • GIS • MAPPERS
VIRGINIA BEACH-RICHMOND-NEWPORT NEWS-CHANTILLY, VIRGINIA
11835 CANON BLVD, SUITE B-103
NEWPORT NEWS, VIRGINIA 23606
TEL: (757) 595-7570



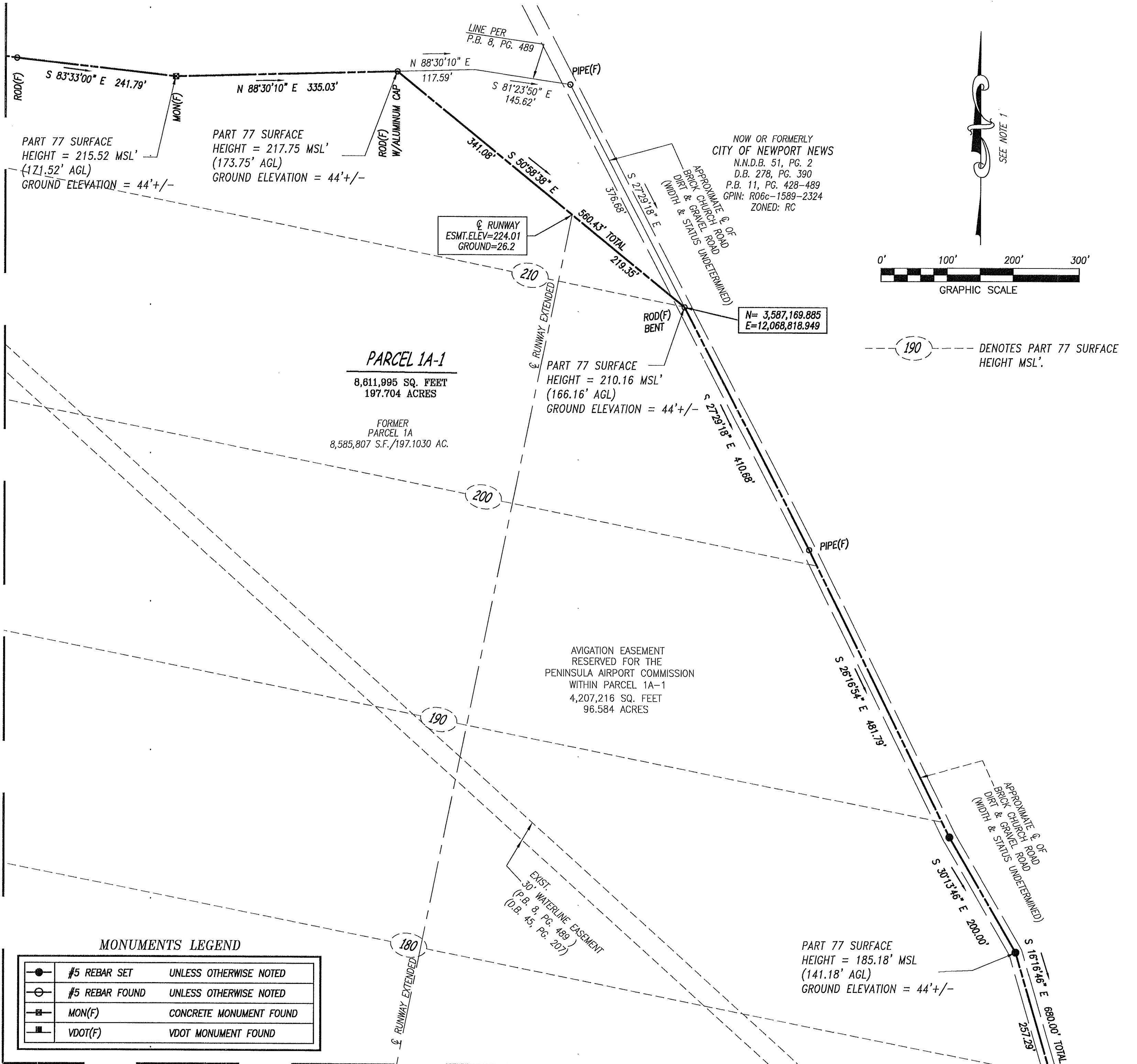
190 --- DENOTES PART 77 SURFACE HEIGHT MSL'.



APPROVED
YORK COUNTY BOARD OF SUPERVISORS
BY: Susan Kassel
PLAT APPROVING AGENT
DATE: 9/23/22

STATE OF VIRGINIA:
COUNTY OF YORK
IN THE CLERK'S OFFICE OF THE CIRCUIT COURT FOR
THE COUNTY OF YORK-POQUOSON, ON THIS
23rd DAY OF September, 2022,
THIS PLAT WAS PRESENTED AND ADMITTED TO RECORD
AS THE LAW DIRECTS, AS INSTRUMENT NUMBER

220016710
TESTED BY: RISTEN H. NELSON, CLERK
BY: Barbara Hutchman, DC
DEPUTY CLERK



MATCH LINE SEE SHEET 6

MATCH LINE SEE SHEET 8

MATCH LINE SEE SHEET 9

MONUMENTS LEGEND

	#5 REBAR SET	UNLESS OTHERWISE NOTED
	#5 REBAR FOUND	UNLESS OTHERWISE NOTED
	MON(F)	CONCRETE MONUMENT FOUND
	VDOT(F)	VDOT MONUMENT FOUND