

MATCH LINE SEE SHEET 7

PLAT OF
BOUNDARY LINE ADJUSTMENT AND PROPERTY LINE VACATION
PART OF PARCEL 1A AND PART OF PARCEL 2

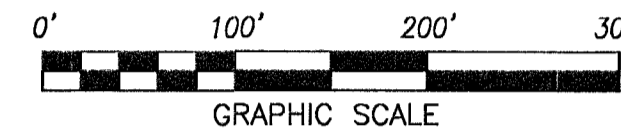
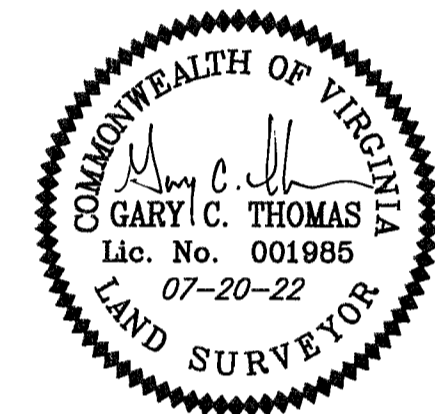
PROPERTY OWNED BY

PENINSULA AIRPORT COMMISSION

LOCATED IN
GRAFTON DISTRICT
YORK COUNTY, VIRGINIA

SCALE: 1" = 100' DATE: JULY 20, 2022
(SHEET 9 OF 12)

PRECISION MEASUREMENTS, INC.
SURVEYORS • GPS • 3-D SCANNING • GIS • MAPPERS
VIRGINIA BEACH-RICHMOND-NEWPORT NEWS-CHANTILLY, VIRGINIA
11835 CANON BLVD, SUITE B-103
NEWPORT NEWS, VIRGINIA 23606
TEL: (757) 595-7570

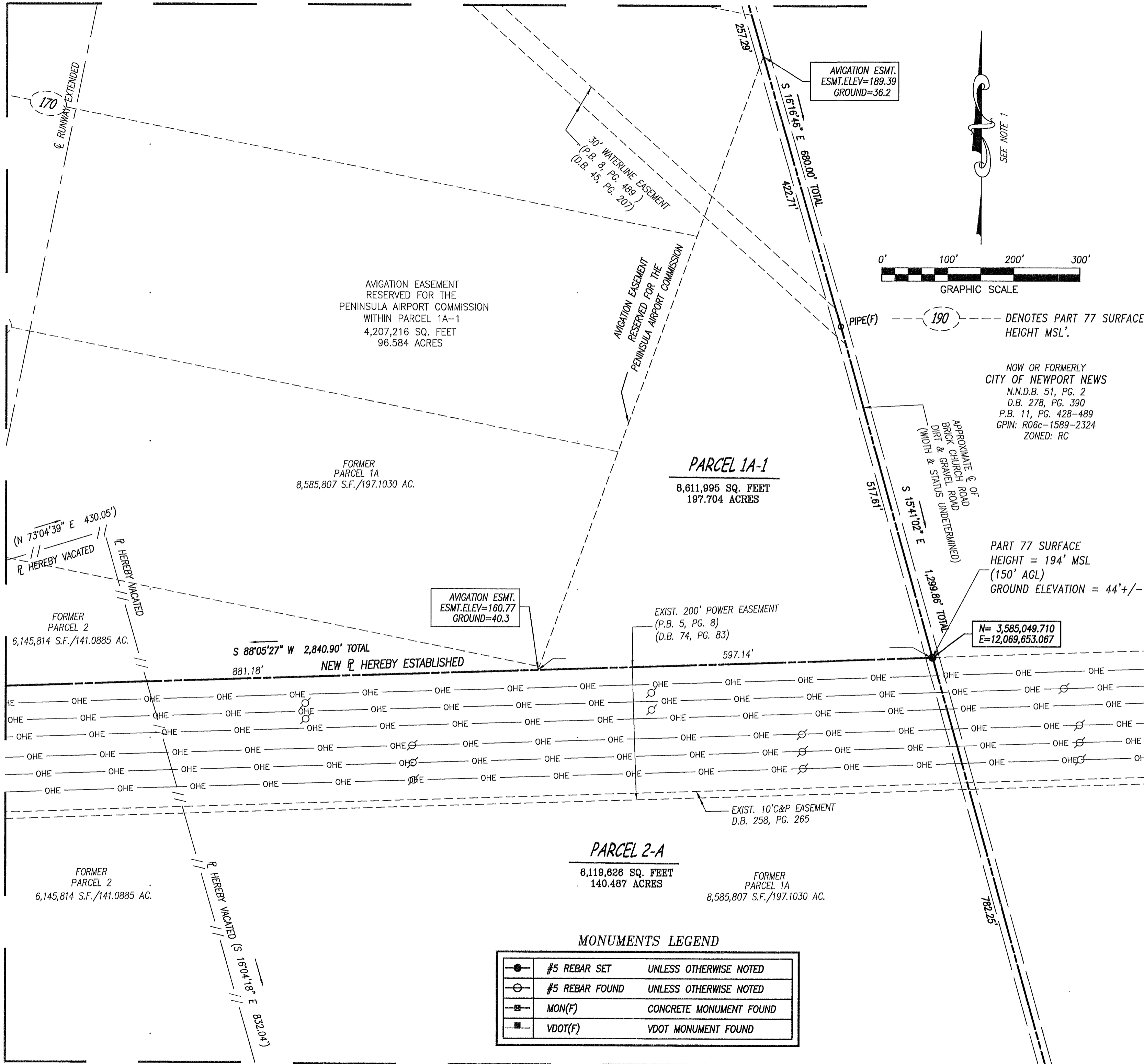


PIPE(F) --- (190) --- DENOTES PART 77 SURFACE HEIGHT MSL'.

NOW OR FORMERLY
CITY OF NEWPORT NEWS
N.N.D.B. 51, PG. 2
D.B. 278, PG. 390
P.B. 11, PG. 428-489
GPIN: R06c-1589-2324
ZONED: RC

PART 77 SURFACE
HEIGHT = 194' MSL
(150' AGL)
GROUND ELEVATION = 44'+/-

N= 3,585,049.710
E= 12,069,653.067



MATCH LINE SEE SHEET 8

MATCH LINE SEE SHEET 10

MATCH LINE SEE SHEET 11

MONUMENTS LEGEND

●	#5 REBAR SET	UNLESS OTHERWISE NOTED
○	#5 REBAR FOUND	UNLESS OTHERWISE NOTED
■	MON(F)	CONCRETE MONUMENT FOUND
■	VDOT(F)	VDOT MONUMENT FOUND

APPROVED

YORK COUNTY BOARD OF SUPERVISORS

BY: *Susan Kassel* **Susan Kassel**
PLAT APPROVING AGENT

DATE: 9/23/22

STATE OF VIRGINIA:
COUNTY OF YORK
IN THE CLERK'S OFFICE OF THE CIRCUIT COURT FOR
THE COUNTY OF YORK-PQQUDSON, ON THIS
23rd DAY OF September, 2022,
THIS PLAT WAS PRESENTED AND ADMITTED TO RECORD
AS THE LAW DIRECTS, AS INSTRUMENT NUMBER

220016710

TESTE: **Kristen N. Nelson**, CLERK
CLERK

BY: *Barbara Autchman*
DEPUTY CLERK