

EASEMENT LEGEND

- 1 - EXISTING 40' YORK COUNTY DRAINAGE EASEMENT [D.B. 359, PG. 469]
- 2 - EXISTING 20' YORK COUNTY UTILITY EASEMENT (CENTERED OVER SANITARY SEWER LINE) [INST. # 170019369]
- 3 - EXISTING PRIVATE 25' DRAINAGE AND UTILITY EASEMENT FOR THE BENEFIT OF TAX PARCELS #36-00-00-022 & #36-01-00-000A [INST. # 100021723]
- 4 - EXISTING VARIABLE WIDTH DRAINAGE EASEMENT (OVER AND THROUGH STORMWATER BASIN, BMP #'s 3 & 4) [INST. # 170020100]
- 5 - EXISTING 10' DRAINAGE EASEMENT (CENTERED ON STORM DRAIN) [INST. # 170020100]
- 6 - EXISTING PRIVATE VARIABLE WIDTH PEDESTRIAN ACCESS ESMT. (ENCOMPASSING SIDEWALKS AND CROSSWALKS ADJACENT TO PUBLIC RIGHT-OF-WAYS) [INST. # 170020100]
- 7 - EXISTING PRIVATE 10' DRAINAGE EASEMENT (CENTERED ON STORM DRAIN) [INST. # 170019369]
- 8 - EXISTING VARIABLE WIDTH PRIVATE DRAINAGE AND UTILITY EASEMENT FOR THE BENEFIT OF TAX PARCELS #36-00-00-022 & #36-01-00-000A [INST. # 140021262]
- 9 - EXISTING VARIABLE WIDTH YORK COUNTY WETLANDS CONSERVATION EASEMENT (OVER AND ACROSS JURISDICTIONAL WETLANDS) [INST # 170019369]
- 10 - EXISTING 35' PRIVATE INGRESS/EGRESS, DRAINAGE AND UTILITIES EASEMENT [INST. # 200004253]
- 11 - EXISTING TEMPORARY TURNAROUND EASEMENT TO BE VACATED UPON THE EXTENSION OF KEENER WAY (50' PUBLIC R/W) AND FUTURE JEANETTE DRIVE (50' PUBLIC R/W)
- 12 - EXISTING VARIABLE WIDTH SIGHT EASEMENT [INST. # 200004253]
- 13 - 35' PRIVATE INGRESS/EGRESS, DRAINAGE AND UTILITIES EASEMENT HEREBY CONVEYED TO MAINSTAY CONDOMINIUM OWNERS ASSOCIATION
- 14 - EXISTING 20' DRAINAGE EASEMENT [INST. # 220008211]

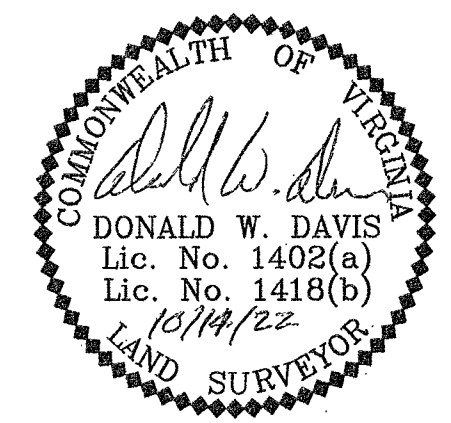
CURVE DATA TABLE						
NUMBER	DELTA ANGLE	RADIUS	ARC LENGTH	TANGENT	CHORD LENGTH	CHORD DIRECTION
C1	90°00'00"	25.00'	39.27'	25.00'	35.36'	S 62°22'50" W
C2	38°17'13"	250.00'	167.06'	86.78'	163.97'	S 88°14'13" W
C3	38°17'16"	250.00'	167.06'	86.78'	163.97'	S 49°56'59" W
C4	03°14'48"	322.54'	18.28'	9.14'	18.27'	N 36°30'37" W
C5	13°14'23"	155.13'	35.85'	18.00'	35.77'	N 44°45'13" W
C6	03°14'48"	357.54'	20.26'	10.13'	20.26'	N 36°30'37" W
C7	03°43'12"	190.13'	12.34'	6.17'	12.34'	N 50°42'34" W
C8	17°24'05"	116.60'	35.41'	17.84'	35.28'	S 40°31'05" E
C9	11°03'33"	267.50'	51.63'	25.90'	51.55'	S 37°20'49" E
C10	13°05'51"	267.50'	61.15'	29.94'	61.02'	S 49°25'30" E

LINE DATA TABLE		
LINE	BEARING	DISTANCE
L1	N 59°11'39" W	36.94'
L2	S 52°53'42" E	34.51'
L3	N 34°53'13" W	15.98'
L4	S 32°08'58" W	36.34'
L5	N 34°53'13" W	15.98'
L6	N 38°08'01" W	67.14'
L7	N 57°51'02" W	35.00'

**"CONDOMINIUM PLAT AND PLANS"
OF
PHASE THIRTY NINE, PARCEL 'D'
AND
PHASE FORTY, PARCEL 'C'
MAINSTAY AT
"COMMONWEALTH GREEN CONDOMINIUM"
SECTION ONE - PARCELS 'C' & 'D'**

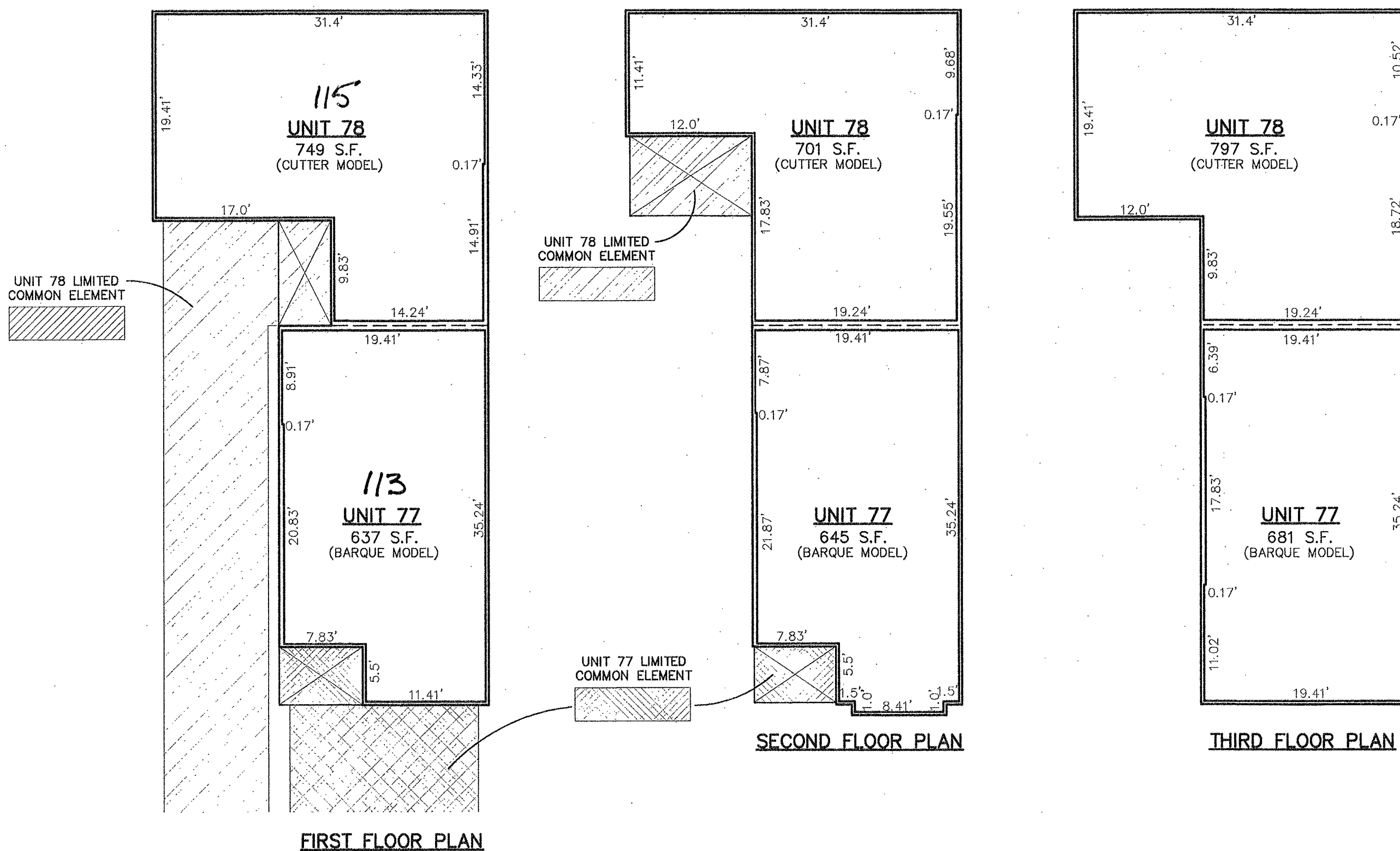
BETHEL MAGISTERIAL DISTRICT
COUNTY OF YORK, VIRGINIA
SCALE: 1"=40' DATE: OCTOBER 14, 2022
SHEET 6 OF 9

DAVIS & ASSOCIATES, P.C.
LAND SURVEYORS AND PLANNERS
3630 GEORGE WASHINGTON MEMORIAL HIGHWAY
YORKTOWN, VIRGINIA 23693
(757)867-8583



PHASE THIRTY NINE - BUILDING FORTY DETAIL (UNITS 77 & 78)

DIMENSIONS REFLECT INTERIOR FRAME LINE



- SYMBOLS -

- DENOTES LIMITED COMMON ELEMENT - UNIT 77
- DENOTES LIMITED COMMON ELEMENT - UNIT 78

NOTE: LIMITED COMMON ELEMENT AREAS DEPICTED HEREON DO NOT BELONG TO TWO UNITS JOINTLY.

APPROVED
YORK COUNTY BOARD OF SUPERVISORS

BY: *Emerson Kassel*
PLAT APPROVING AGENT

DATE: FEBRUARY 22, 2023

STATE OF VIRGINIA
COUNTY OF YORK
IN THE CLERK'S OFFICE OF THE YORK
POQUOSON CIRCUIT COURT THIS 23rd
DAY OF February, 2023 THIS MAP WAS
PRESENTED AND ADMITTED TO RECORD AS
THE LAW DIRECTS AS INSTRUMENT # 2300021641

TESTE: KRISTEN N. NELSON, CLERK
CLERK

BY: *Darlene M. Helt, et al*