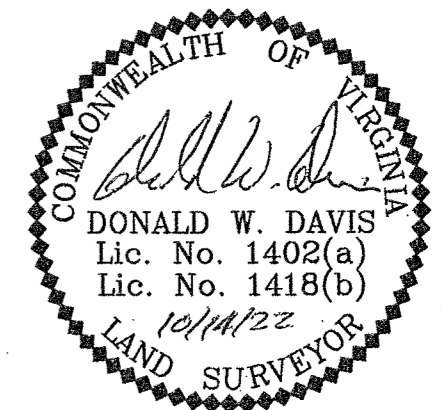


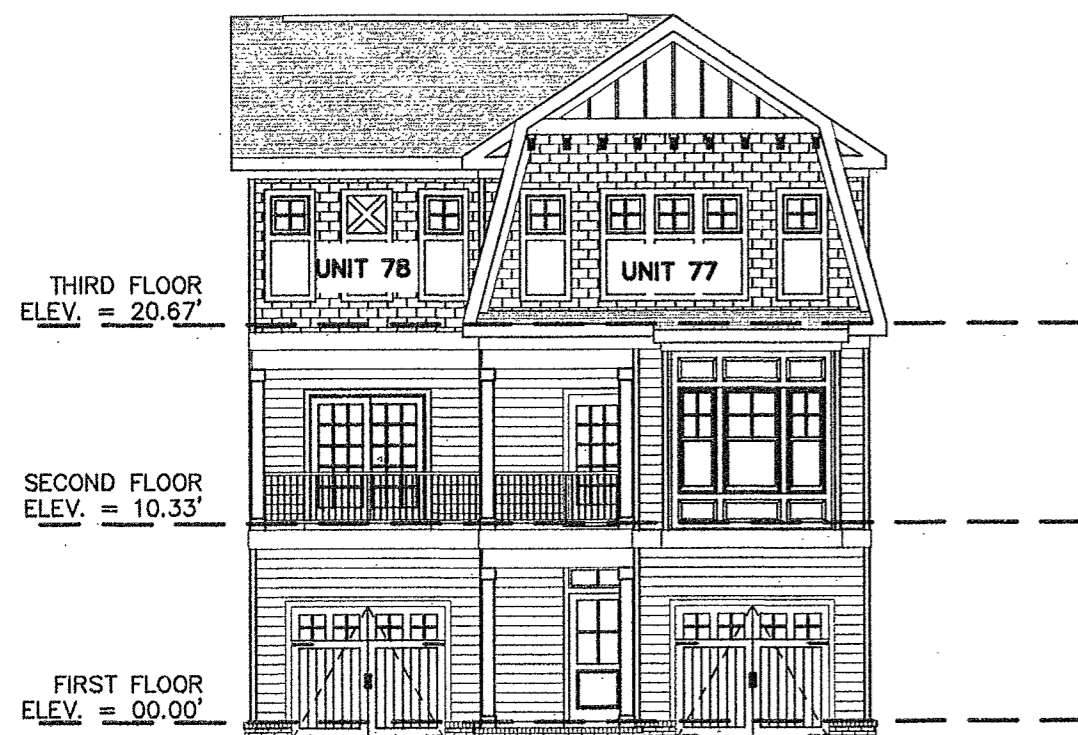
"CONDOMINIUM PLAT AND PLANS"
OF
PHASE THIRTY NINE, PARCEL 'D'
AND
PHASE FORTY, PARCEL 'C'
MAINSTAY AT
"COMMONWEALTH GREEN CONDOMINIUM"
SECTION ONE - PARCELS 'C' & 'D'

BETHEL MAGISTERIAL DISTRICT
COUNTY OF YORK, VIRGINIA
SCALE: 1"=40' DATE: OCTOBER 14, 2022
SHEET 7 OF 9

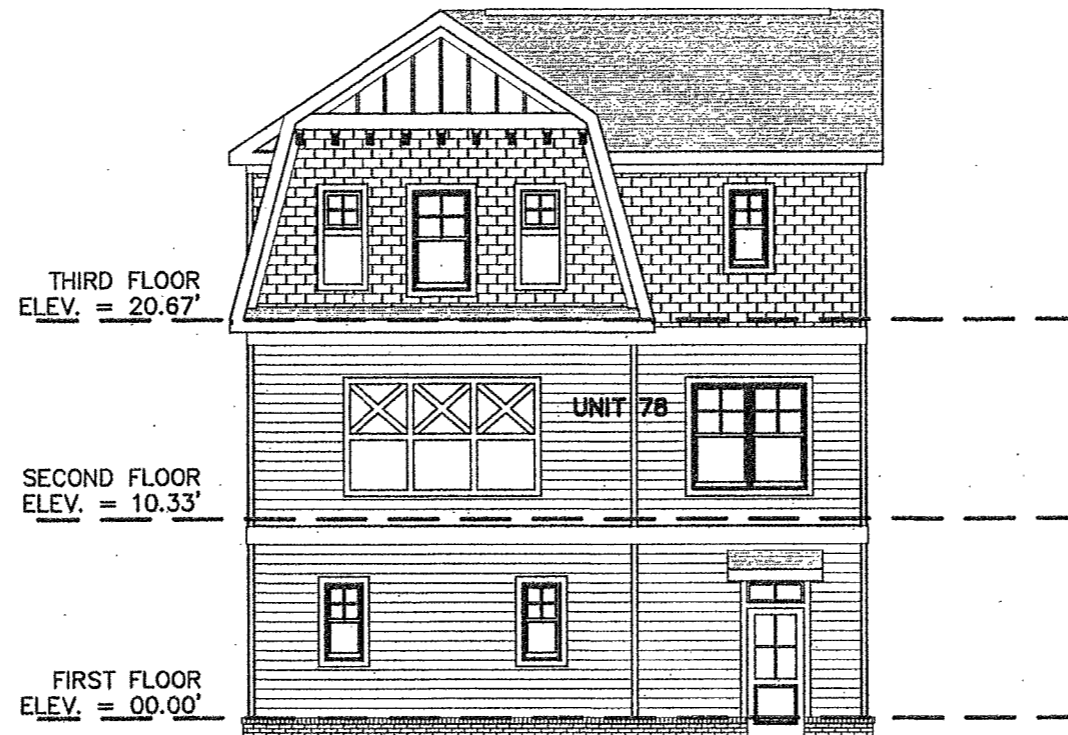
DAVIS & ASSOCIATES, P.C.
LAND SURVEYORS AND PLANNERS
3630 GEORGE WASHINGTON MEMORIAL HIGHWAY
YORKTOWN, VIRGINIA 23693
(757)867-8583



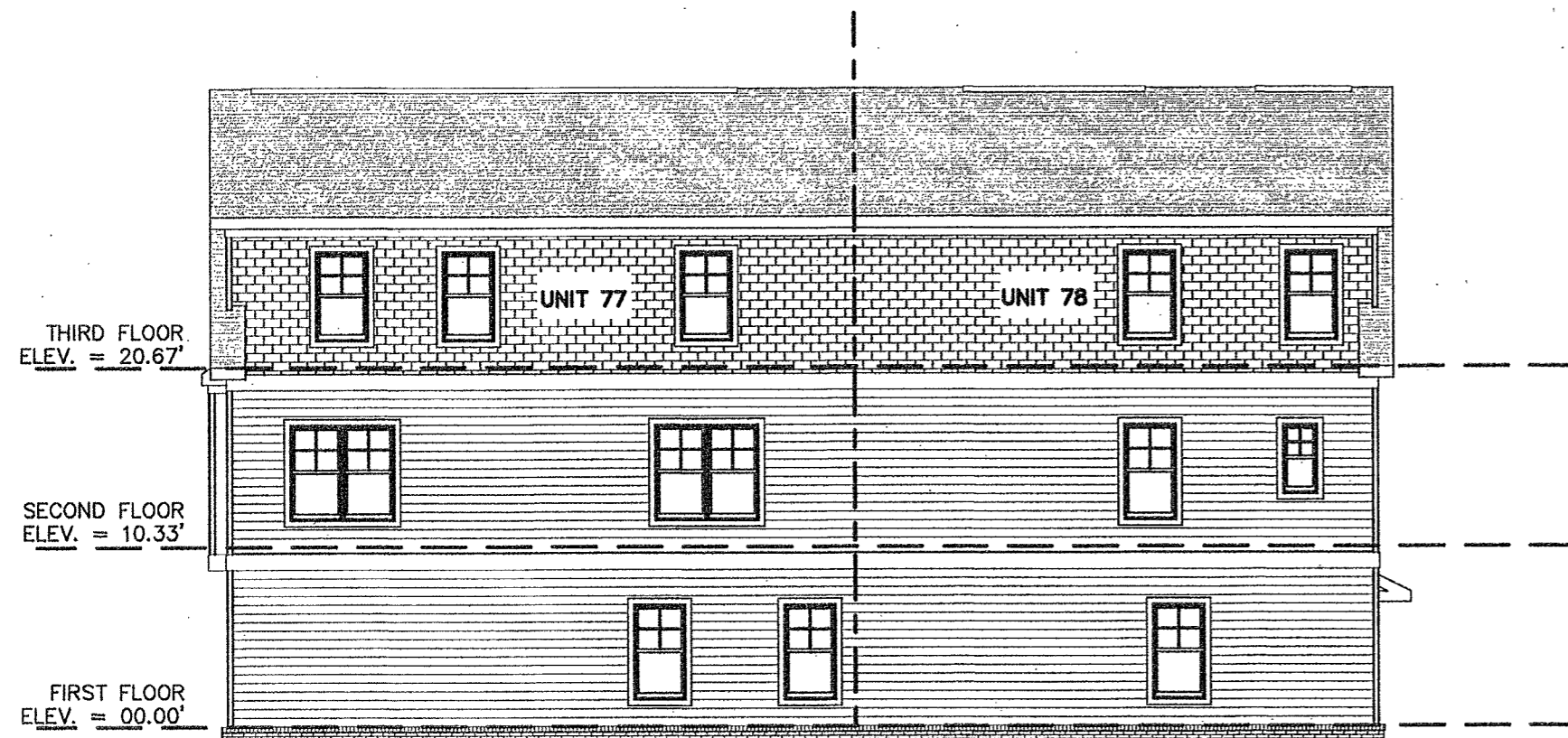
PHASE THIRTY NINE - BUILDING FORTY DETAIL (UNITS 77 & 78)



FRONT ELEVATION
(PRIVATE LANE SIDE)



REAR ELEVATION
(PUBLIC STREET SIDE)



RIGHT SIDE ELEVATION



LEFT SIDE ELEVATION

APPROVED
YORK COUNTY BOARD OF SUPERVISORS
BY: Erin Kasul
PLAT APPROVING AGENT
DATE: FEBRUARY 22, 2023

STATE OF VIRGINIA
COUNTY OF YORK
IN THE CLERK'S OFFICE OF THE YORK -
POQUOSON CIRCUIT COURT THIS 23rd
DAY OF February 2023 THIS MAP WAS
PRESENTED AND ADMITTED TO RECORD AS
THE LAW DIRECTS AS INSTRUMENT # 230002641
TESTE: KRISTEN N. NELSON, CLERK
CLERK
BY: Maelone M. Helt, etc