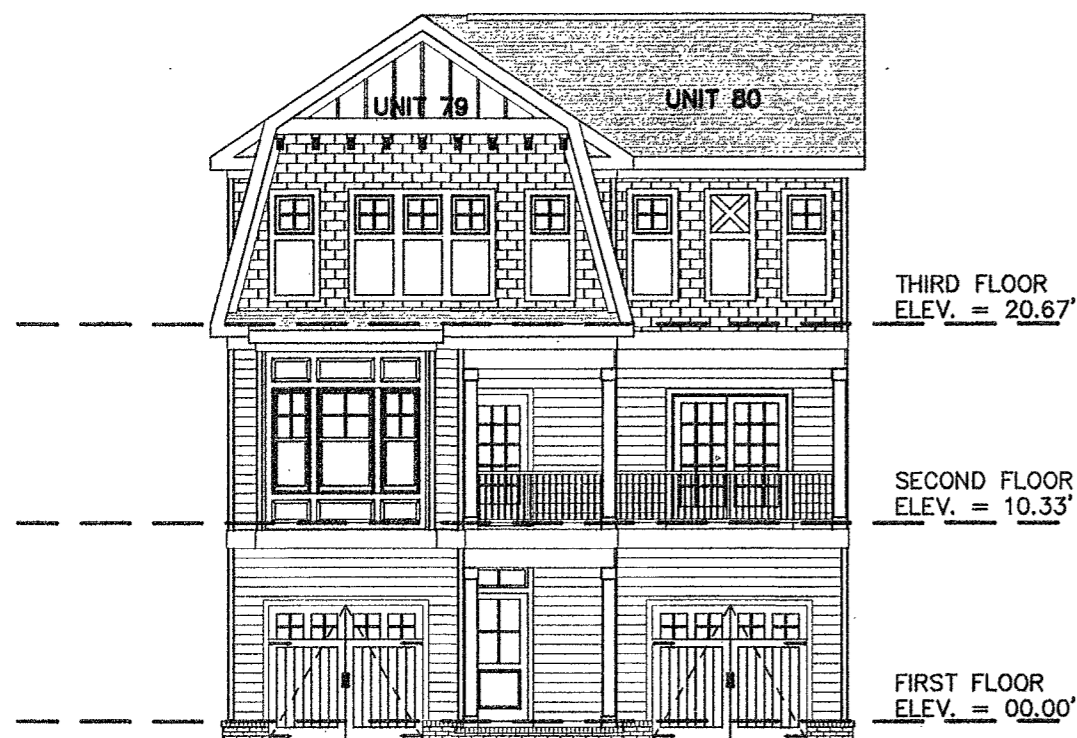
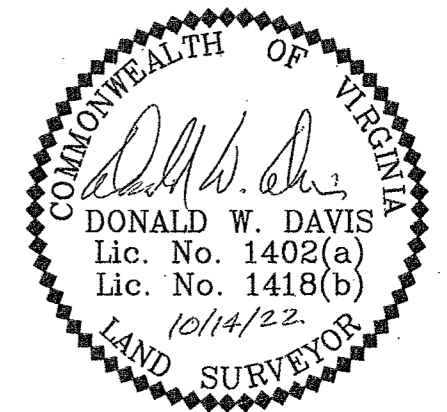


PHASE FORTY – BUILDING THIRTY NINE DETAIL (UNITS 79 & 80)

"CONDOMINIUM PLAT AND PLANS"  
 OF  
 PHASE THIRTY NINE, PARCEL 'D'  
 AND  
 PHASE FORTY, PARCEL 'C'  
 MAINSTAY AT  
 "COMMONWEALTH GREEN CONDOMINIUM"  
 SECTION ONE – PARCELS 'C' & 'D'

BETHEL MAGISTERIAL DISTRICT  
 COUNTY OF YORK, VIRGINIA  
 SCALE: 1"=40' DATE: OCTOBER 14, 2022  
 SHEET 9 OF 9

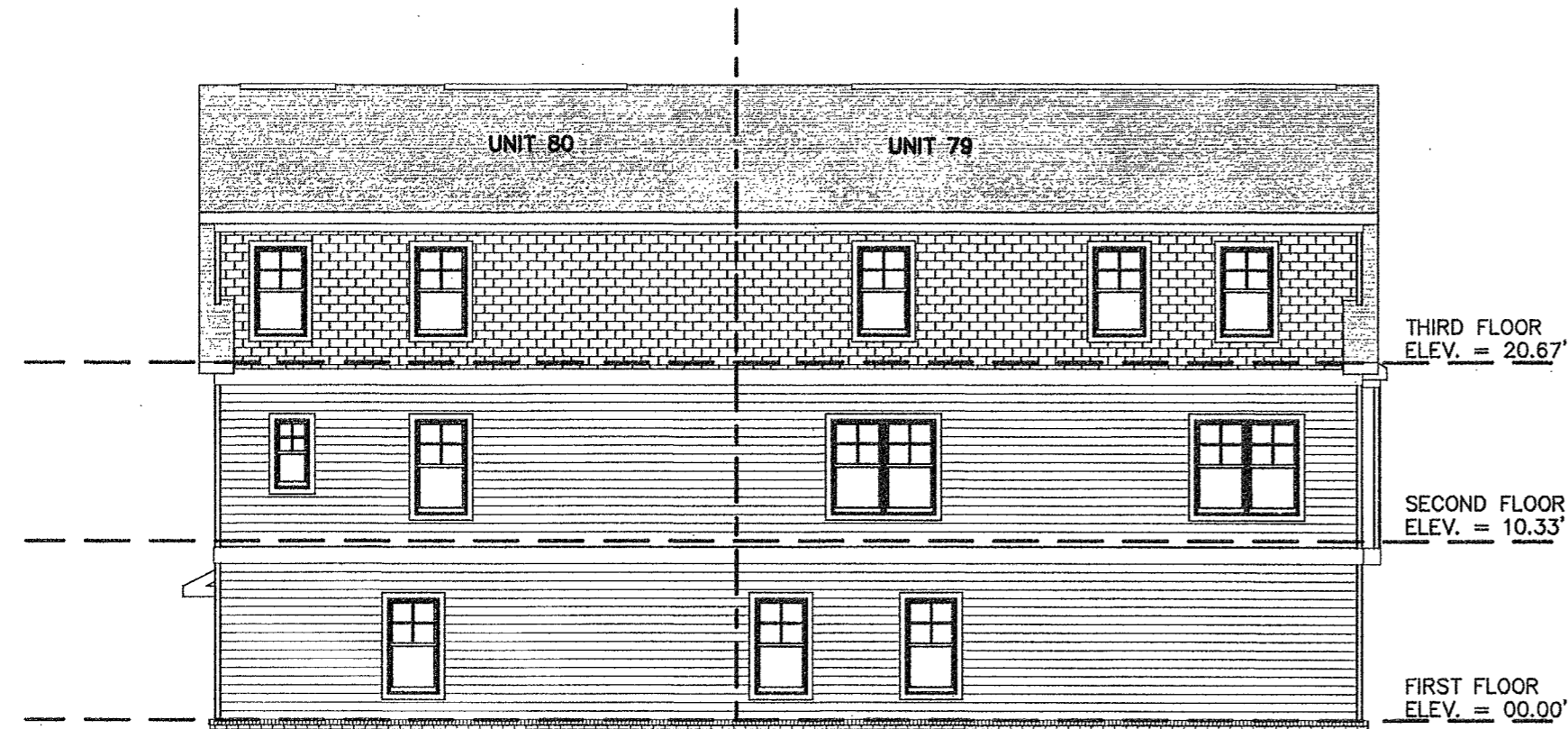
DAVIS & ASSOCIATES, P.C.  
 LAND SURVEYORS AND PLANNERS  
 3630 GEORGE WASHINGTON MEMORIAL HIGHWAY  
 YORKTOWN, VIRGINIA 23693  
 (757)867-8583



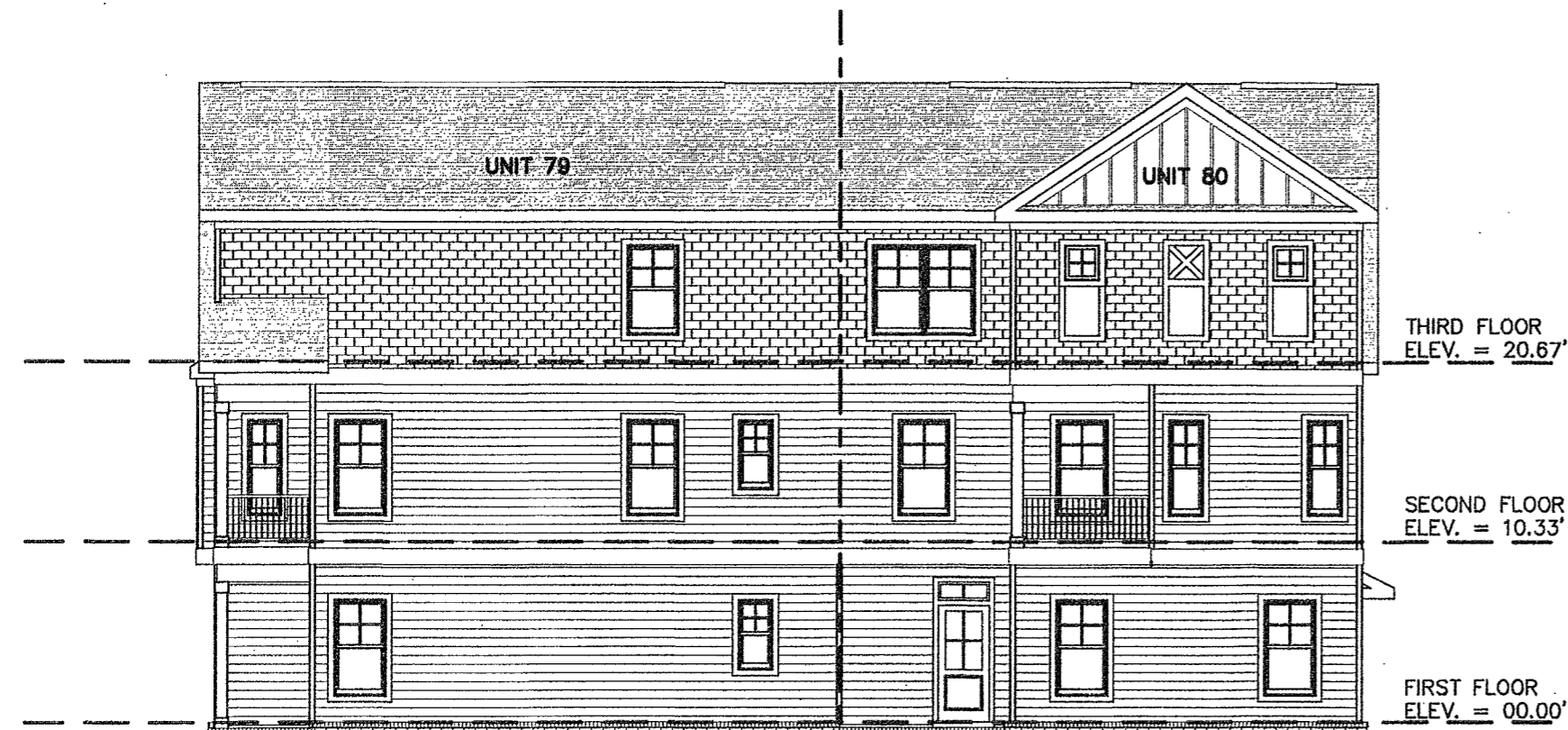
FRONT ELEVATION  
 (PRIVATE LANE SIDE)



REAR ELEVATION  
 (PUBLIC STREET SIDE)



LEFT SIDE ELEVATION



RIGHT SIDE ELEVATION

APPROVED  
 YORK COUNTY BOARD OF SUPERVISORS  
 BY: Emmanuel Kassel  
 PLAT APPROVING AGENT  
 DATE: FEBRUARY 22, 2023

STATE OF VIRGINIA  
 COUNTY OF YORK  
 IN THE CLERK'S OFFICE OF THE YORK –  
 POQUOSON CIRCUIT COURT THIS 23<sup>rd</sup>  
 DAY OF February, 2023 THIS MAP WAS  
 PRESENTED AND ADMITTED TO RECORD AS  
 THE LAW DIRECTS AS INSTRUMENT # 230002641  
 TESTE: KRISTEN N. NELSON, CLERK  
 CLERK  
 BY: Naehne Nettelt, OC