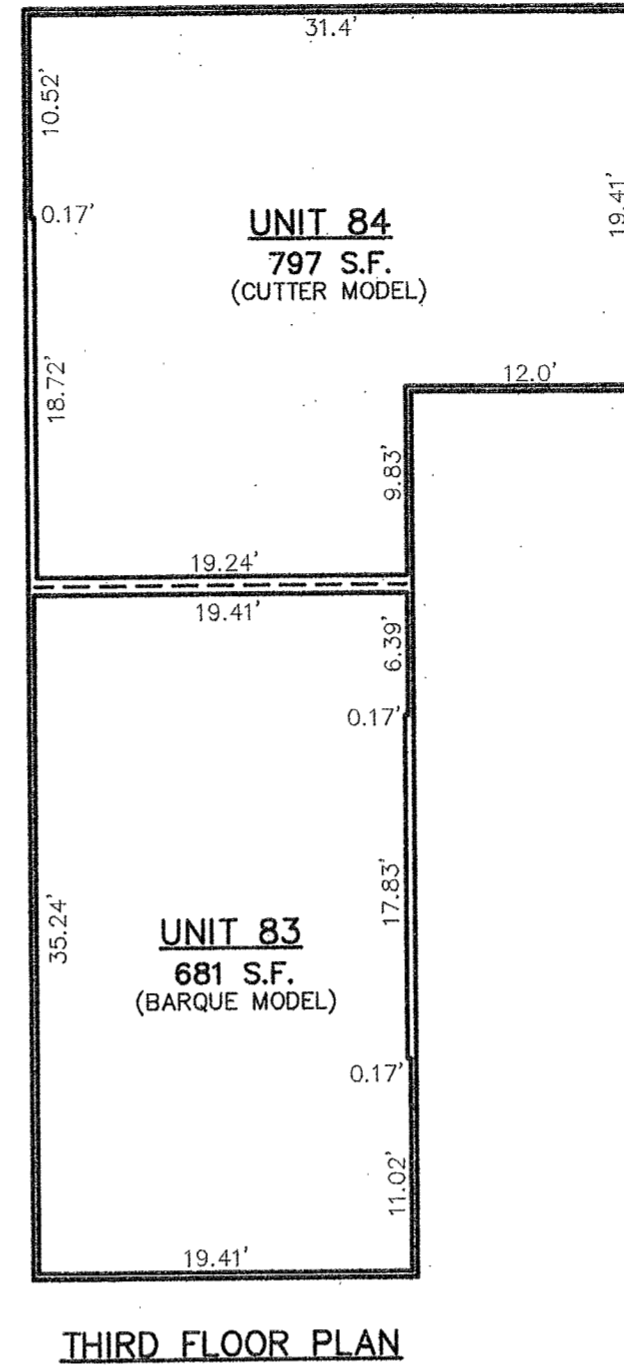
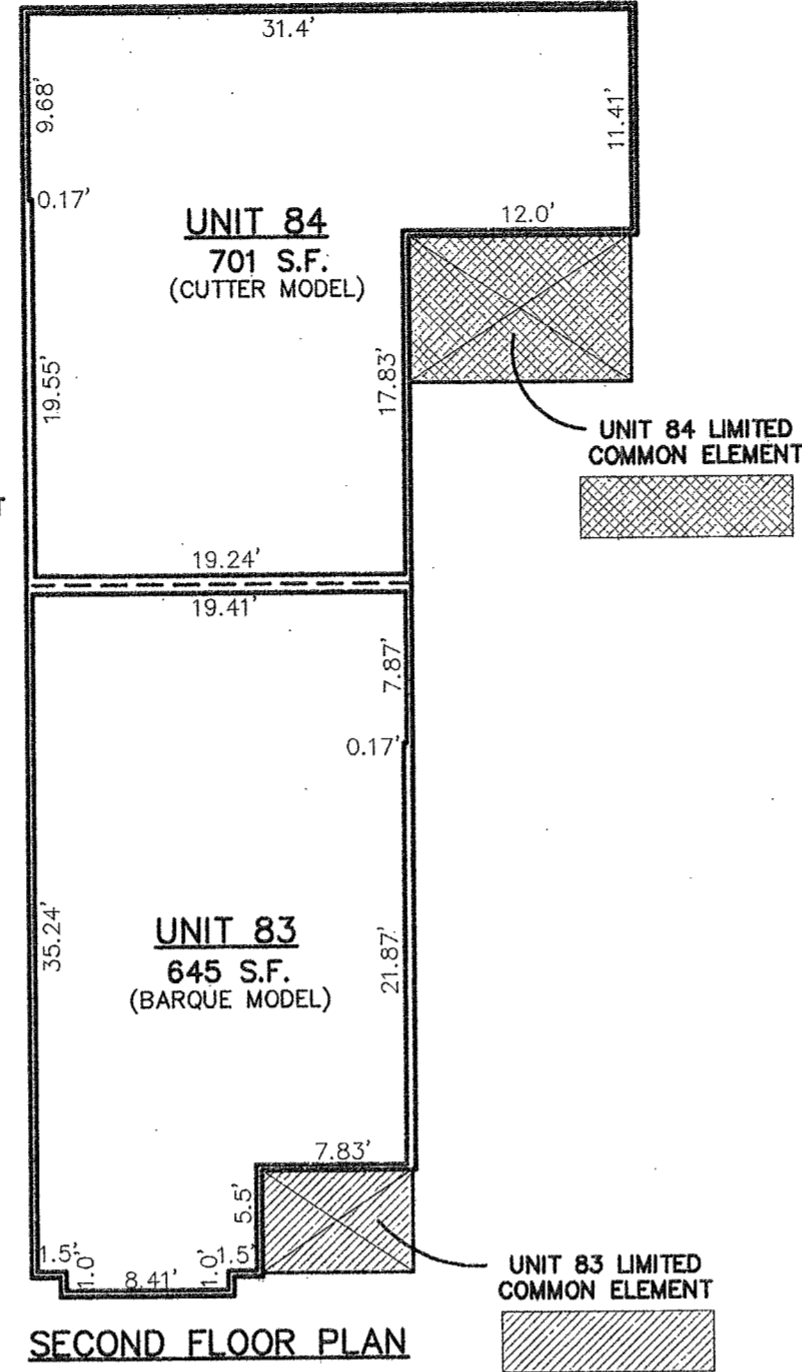
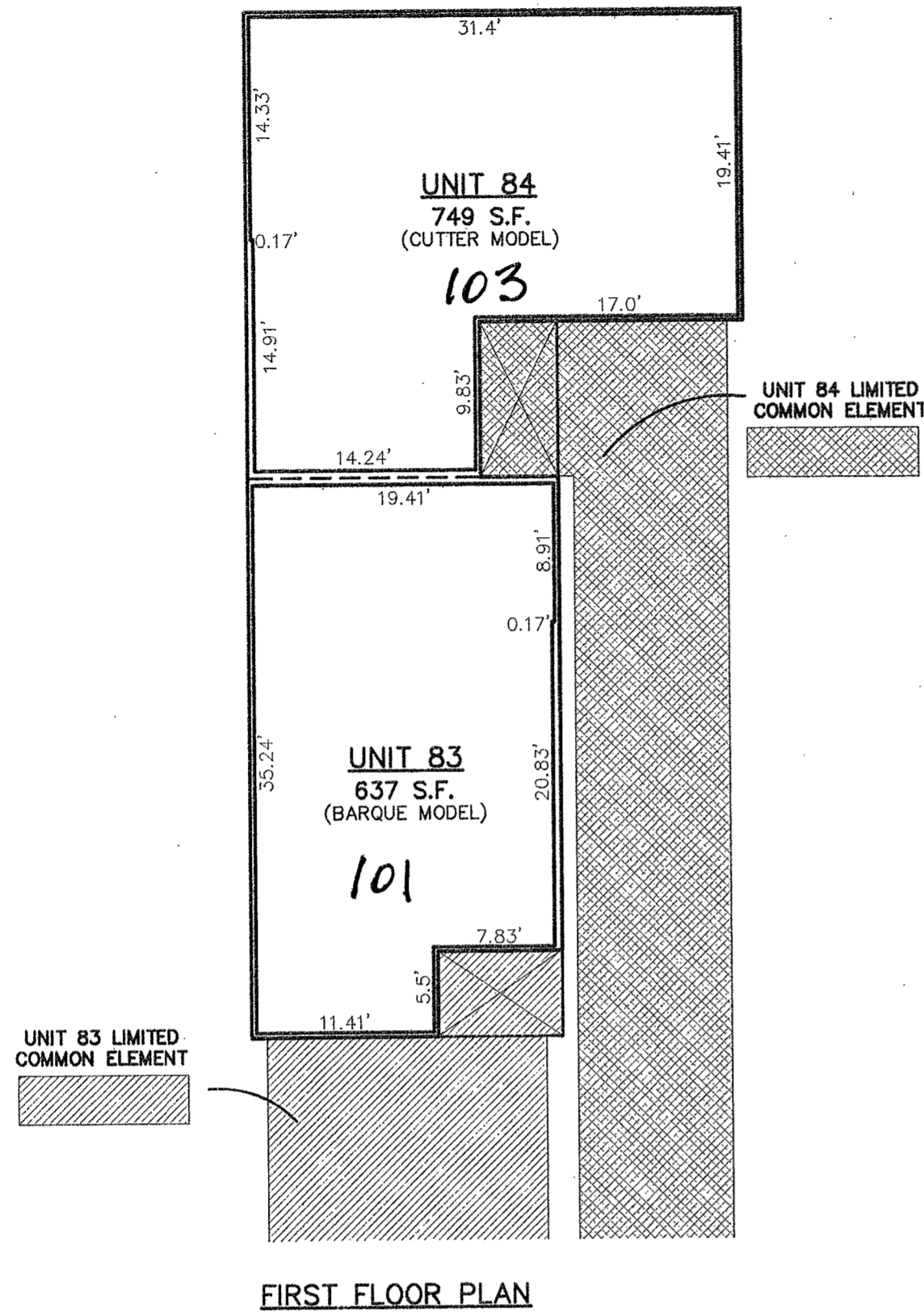


PHASE FORTY TWO - BUILDING THIRTY SEVEN DETAIL (UNITS 83 & 84)

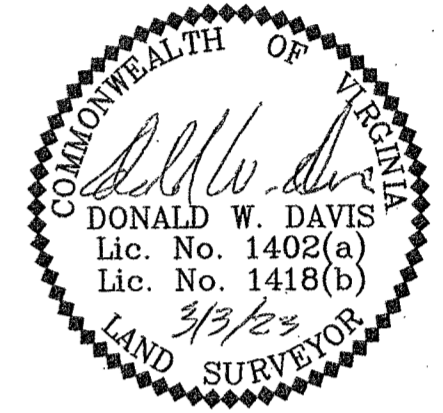
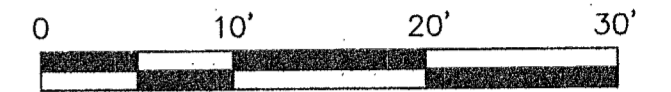
DIMENSIONS REFLECT INTERIOR FRAME LINE



"CONDOMINIUM PLAT AND PLANS"  
OF  
PHASE FORTY TWO, PARCEL 'C'  
MAINSTAY AT  
"COMMONWEALTH GREEN CONDOMINIUM"  
SECTION ONE - PARCEL 'C'

BETHEL MAGISTERIAL DISTRICT  
COUNTY OF YORK, VIRGINIA  
SCALE: 1"=10' DATE: MARCH 03, 2023  
SHEET 6 OF 7

DAVIS & ASSOCIATES, P.C.  
LAND SURVEYORS AND PLANNERS  
3630 GEORGE WASHINGTON MEMORIAL HIGHWAY  
YORKTOWN, VIRGINIA 23693  
(757)867-8583



- SYMBOLS -

- DENOTES LIMITED COMMON ELEMENT - UNIT 83
- DENOTES LIMITED COMMON ELEMENT - UNIT 84

NOTE: LIMITED COMMON ELEMENT AREAS  
DEPICTED HEREON DO NOT BELONG TO TWO  
UNITS JOINTLY.

**A P P R O V E D**  
YORK COUNTY BOARD OF SUPERVISORS

BY: *Susan Kassel* FOR SUSAN KASSEL  
PLAT APPROVING AGENT

DATE: 4/7/23

STATE OF VIRGINIA  
COUNTY OF YORK  
IN THE CLERK'S OFFICE OF THE YORK -  
POQUOSON CIRCUIT COURT THIS 7th  
DAY OF April 2023, THIS MAP WAS  
PRESENTED AND ADMITTED TO RECORD AS  
THE LAW DIRECTS AS INSTRUMENT # 230004729

TESTE: KRISTEN N. NELSON, CLERK  
CLERK

BY: *Deborah Mettelt, cl*