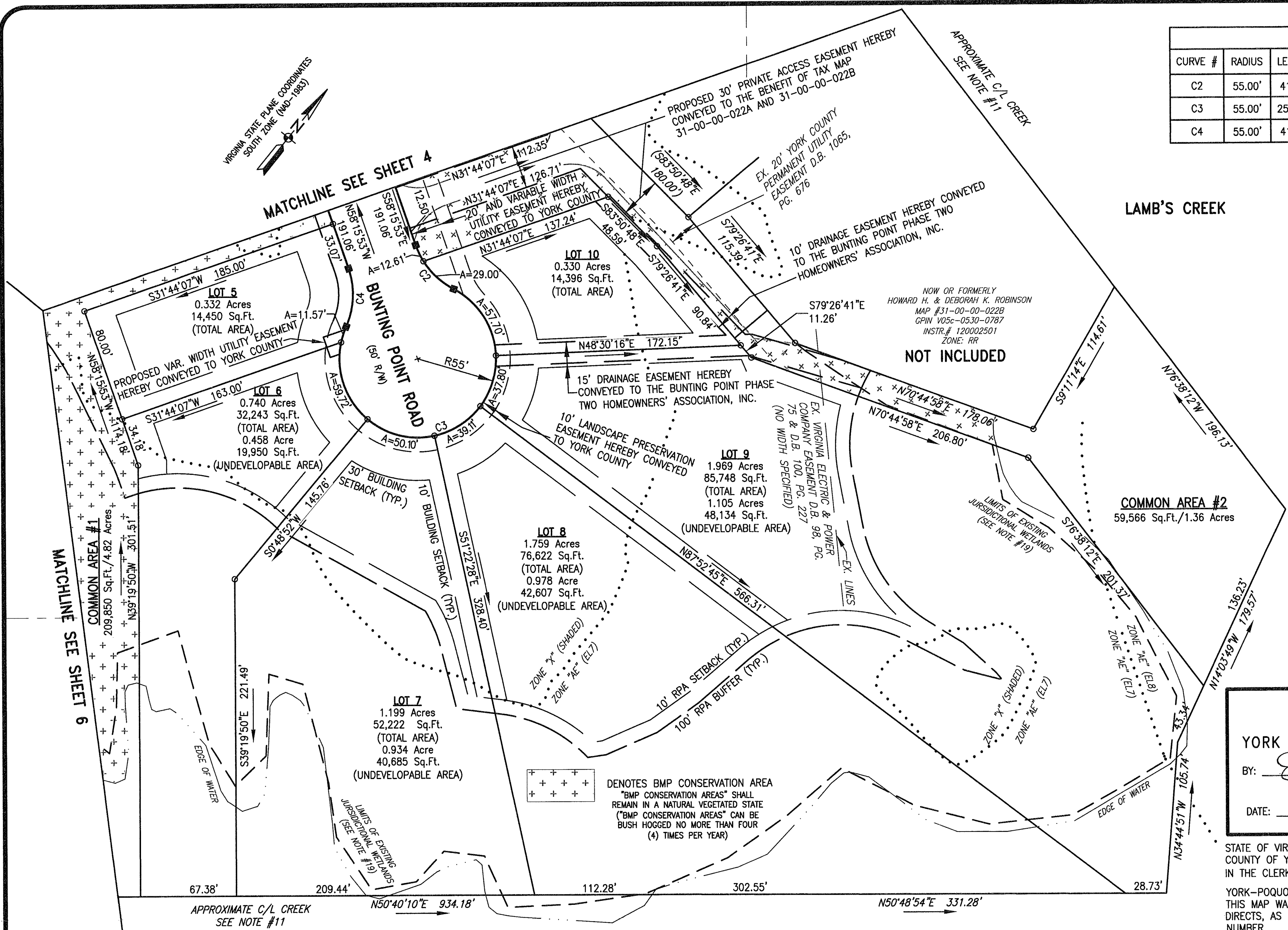


CURVE DATA					
CURVE #	RADIUS	LENGTH	DELTA	TANGENT	CHORD
C2	55.00'	41.61'	43°20'30"	21.85'	S79°56'08"E 40.62'
C3	55.00'	256.00'	266°41'01"	58.28'	S31°44'07"W 80.00'
C4	55.00'	41.61'	43°20'30"	21.85'	N36°35'38"W 40.62'



MATCHLINE SEE SHEET 6

MATCHLINE SEE SHEET 4

APPROVED
 YORK COUNTY BOARD OF SUPERVISORS
 BY: Susan Kassel
 PLAT APPROVING AGENT
 DATE: JULY 11, 2023

STATE OF VIRGINIA
 COUNTY OF YORK
 IN THE CLERK'S OFFICE OF THE CIRCUIT COURT FOR THE COUNTY OF
 YORK-POQUOSON, ON THIS 12th DAY OF July, 2023
 THIS MAP WAS PRESENTED AND ADMITTED TO RECORD AS THE LAW
 DIRECTS, AS INSTRUMENT
 NUMBER 230010045

TESTE: KRISTEN N. NELSON, CLERK
 CLERK
 BY: Darlene M. Helt, ce

DENOTES BMP CONSERVATION AREA
 "BMP CONSERVATION AREAS" SHALL
 REMAIN IN A NATURAL VEGETATED STATE
 ("BMP CONSERVATION AREAS" CAN BE
 BUSH HOGGED NO MORE THAN FOUR
 (4) TIMES PER YEAR)

- LEGEND**
- IRON PIN FOUND (UNLESS OTHERWISE NOTED)
 - #5 IRON REBAR SET (UNLESS OTHERWISE NOTED)
 - #5 IRON REBAR SET IN CONCRETE



PLAT OF CORRECTION
 INSTRUMENT NO. 190019505
 SUBDIVISION PLAT OF
BUNTING POINT PHASE 2
 BETHEL DISTRICT, YORK COUNTY, VIRGINIA

DRAWN: DHW	DATE: 1/23/23	REVISION:
COMP: BJL	SCALE: 1"=50'	
CHECKED: BJL		

PARRISH LAYNE
 DESIGN GROUP
 Engineers • Surveyors • Planners
 P.O. Box 9164, Chesapeake, VA 23321
 Phone: 757.686.3345 Fax: 757.686.3348

REF: _____ SHEET NO. **5**
 INST# 170014092 SHEET: 5 of 6

G:\184-0-17 BUNTING POINT SUB PLAT\DWG\SURVEY\184-SUB PLAT.DWG