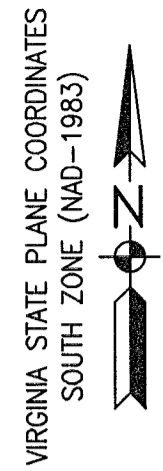
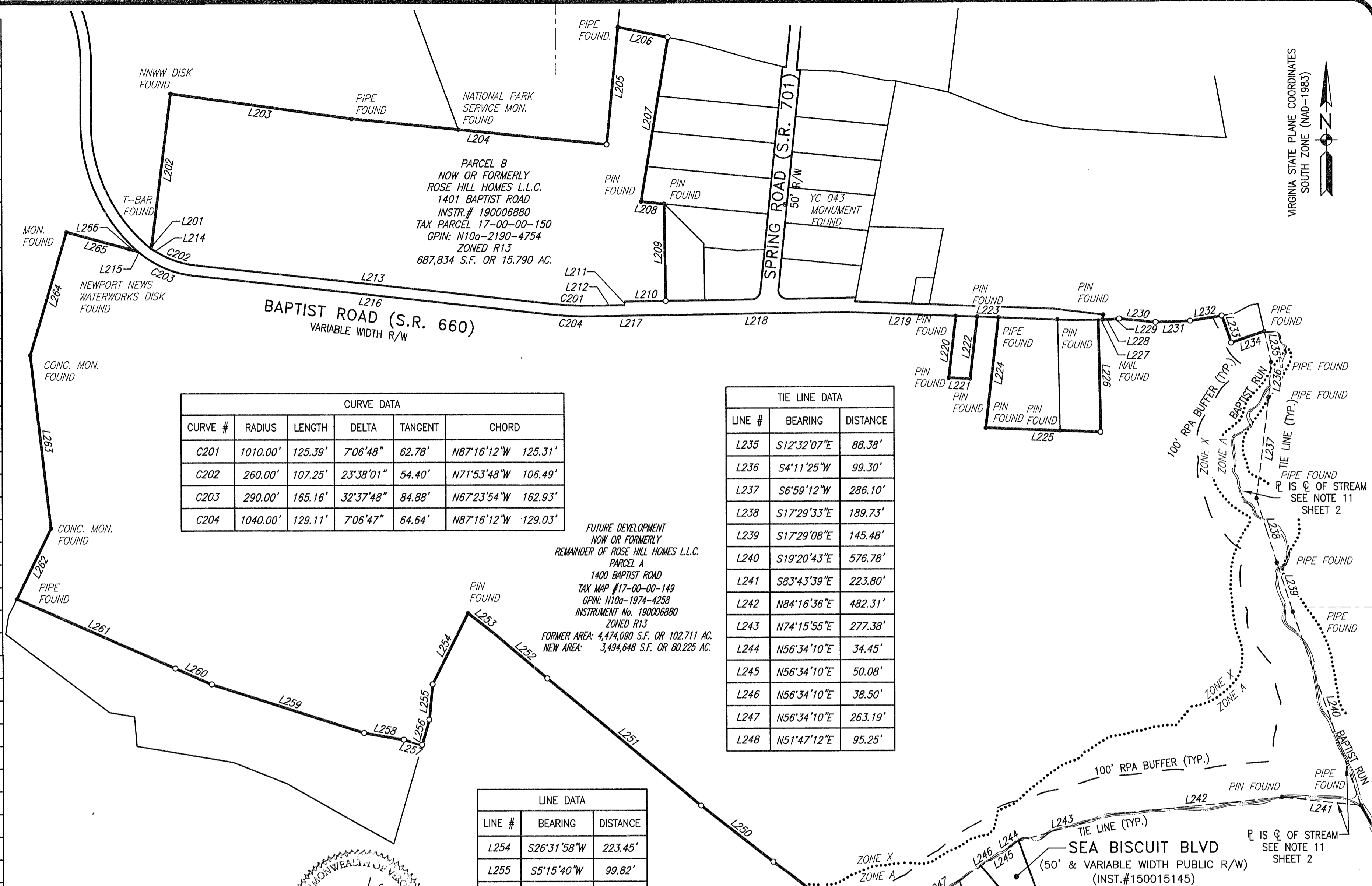


LINE DATA		
LINE #	BEARING	DISTANCE
L201	S7°13'42"W	12.95'
L202	S7°13'42"W	426.39'
L203	N82°00'38"W	515.38'
L204	N84°08'24"W	721.96'
L205	S5°36'30"W	331.51'
L206	N78°32'10"W	143.69'
L207	N9°22'56"E	468.22'
L208	N84°11'34"W	65.03'
L209	N0°49'35"W	272.40'
L210	S89°10'25"W	121.96'
L211	S9°22'56"W	10.16'
L212	S89°10'25"W	86.32'
L213	N83°42'48"W	1003.41'
L214	N60°04'48"W	26.13'
L215	N51°05'00"W	10.63'
L216	N83°42'48"W	1003.41'
L217	S89°10'25"W	210.09'
L218	S89°10'25"W	495.77'
L219	N87°45'10"W	314.16'
L220	S6°37'24"W	175.27'
L221	S87°50'05"E	60.00'
L222	N6°39'55"E	175.19'
L223	S87°45'10"E	59.85'
L224	S6°44'37"W	312.00'
L225	N87°42'52"W	324.14'
L226	S1°09'49"E	315.52'
L227	S89°14'37"W	12.90'
L228	N89°14'37"E	22.88'
L229	N86°06'51"E	24.30'
L230	S84°38'56"E	102.68'
L231	N88°03'12"E	97.34'
L232	N80°45'33"E	90.02'
L233	S18°58'07"E	81.08'
L234	N71°01'53"E	98.70'
L249	N53°01'01"W	362.12'
L250	N52°01'01"W	257.58'
L251	N50°18'49"W	561.43'
L252	N49°54'19"W	193.40'
L253	N52°10'39"W	96.05'

CURVE DATA					
CURVE #	RADIUS	LENGTH	DELTA	TANGENT	CHORD
C201	1010.00'	125.39'	7°06'48"	62.78'	N87°16'12"W 125.31'
C202	260.00'	107.25'	23°38'01"	54.40'	N71°53'48"W 106.49'
C203	290.00'	165.16'	32°37'48"	84.88'	N67°23'54"W 162.93'
C204	1040.00'	129.11'	7°06'47"	64.64'	N87°16'12"W 129.03'

TIE LINE DATA		
LINE #	BEARING	DISTANCE
L235	S12°32'07"E	88.38'
L236	S4°11'25"W	99.30'
L237	S6°59'12"W	286.10'
L238	S17°29'33"E	189.73'
L239	S17°29'08"E	145.48'
L240	S19°20'43"E	576.78'
L241	S83°43'39"E	223.80'
L242	N84°16'36"E	482.31'
L243	N74°15'55"E	277.38'
L244	N56°34'10"E	34.45'
L245	N56°34'10"E	50.08'
L246	N56°34'10"E	38.50'
L247	N56°34'10"E	263.19'
L248	N51°47'12"E	95.25'

LINE DATA		
LINE #	BEARING	DISTANCE
L254	S26°31'58"W	223.45'
L255	S5°15'40"W	99.82'
L256	S16°17'55"W	73.91'
L257	N74°15'54"W	53.29'
L258	N80°11'15"W	113.76'
L259	N72°16'24"W	450.47'
L260	N66°14'22"W	112.22'
L261	N66°12'12"W	487.45'
L262	N25°49'48"E	220.16'
L263	N6°35'27"W	489.88'
L264	N16°30'46"E	361.40'
L265	S74°51'09"E	182.87'
L266	S74°51'09"E	25.12'



SEE SHEET 3 FOR ADJOINING OWNERS AND PROPOSED PHASE LINE

**SUBDIVISION PLAT**  
**ROSE HILL**  
 PHASE 1  
 AN OPEN SPACE DEVELOPMENT  
 TAX PARCELS: 17-00-00-149 & 17-00-00-150  
 NELSON DISTRICT  
 YORK COUNTY, VIRGINIA

DRAWN: DHW    DATE: 7/1/24    REVISION:  
 COMP: BJL    SCALE: 1"=200'  
 CHECKED: BJL

**PARRISH LAYNE**  
**DESIGN GROUP**  
 Engineers • Surveyors • Planners  
 P.O. Box 9164, Chesapeake, VA 23321  
 Phone: 757.686.3345 Fax: 757.686.3348

REF:    SHEET NO. **4**  
 INST.# 190006880    SHEET: 4 of 9

T BAR FOUND ●    T BAR FOUND ●  
 DISK FOUND ●    DISK FOUND ●  
 CONC. MON FOUND ●    CONCRETE MONUMENT FOUND ●  
 PIPE FOUND ●    PIPE FOUND ●  
 PIN FOUND ○    IRON PIN FOUND ○  
                                  #5 IRON REBAR SET ○  
                                  #5 IRON REBAR SET IN CONCRETE ■

200 0 200 400  
 scale feet

**APPROVED**  
 YORK COUNTY BOARD OF SUPERVISORS  
 BY: *Erwan Kassel*  
 PLAT APPROVING AGENT  
 DATE: August 26, 2024

STATE OF VIRGINIA  
 COUNTY OF YORK  
 IN THE CLERK'S OFFICE OF THE CIRCUIT COURT FOR THE COUNTY OF  
 YORK-POQUOSON, ON THIS 29 DAY OF August, 2024.  
 THIS MAP WAS PRESENTED AND ADMITTED TO RECORD AS THE LAW  
 DIRECTS, AS INSTRUMENT  
 NUMBER 24001754

TESTE: KRISTEN N. NELSON, CLERK  
 CLERK  
 BY: *Debra McKeown DC*

\\PL-0001\Group\4511.0-19 Rose Hill\SUB PLAT\DWG\SURVEY\4511-Rose Hill Plat-1.dwg  
 4511.0-19