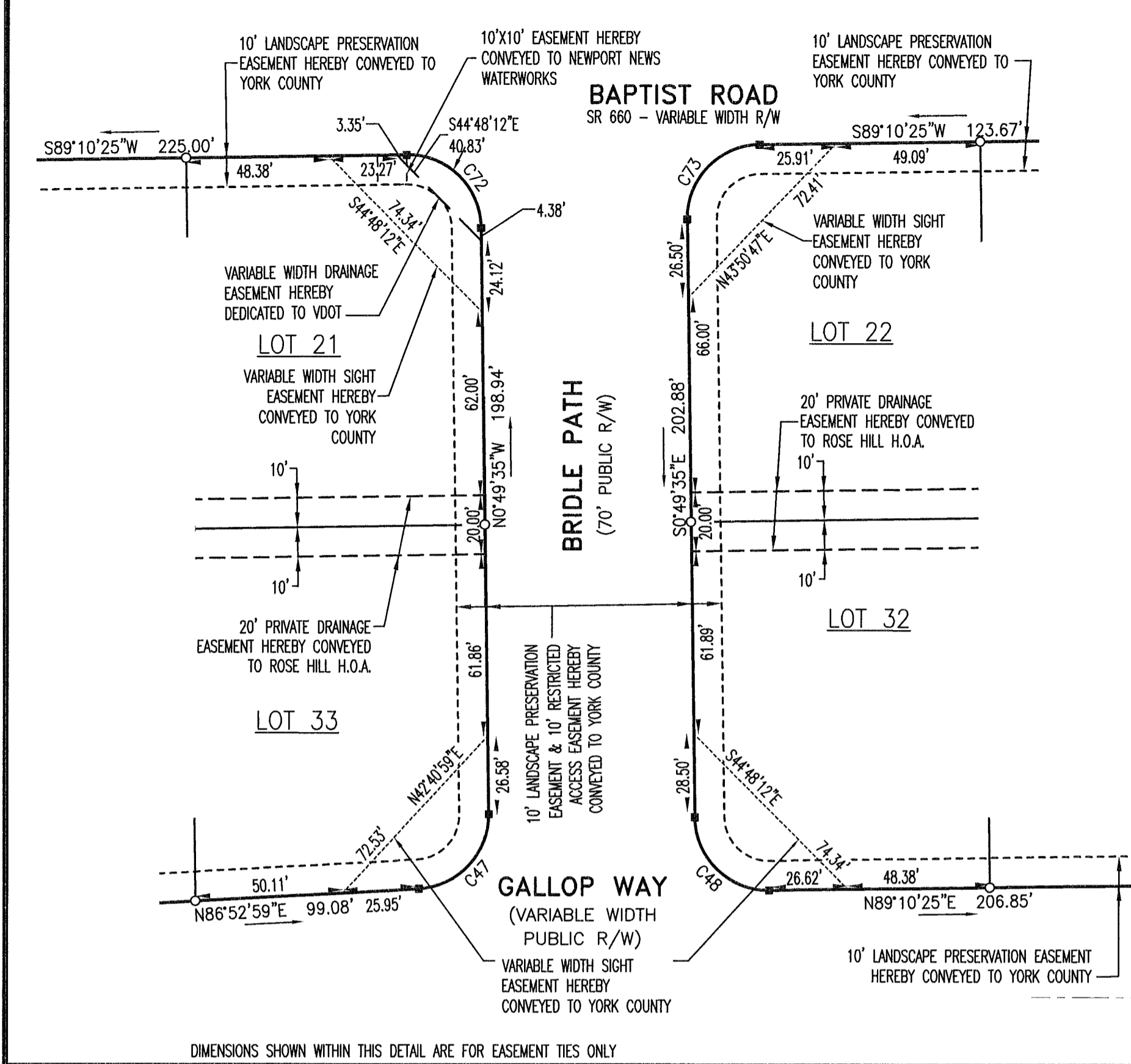
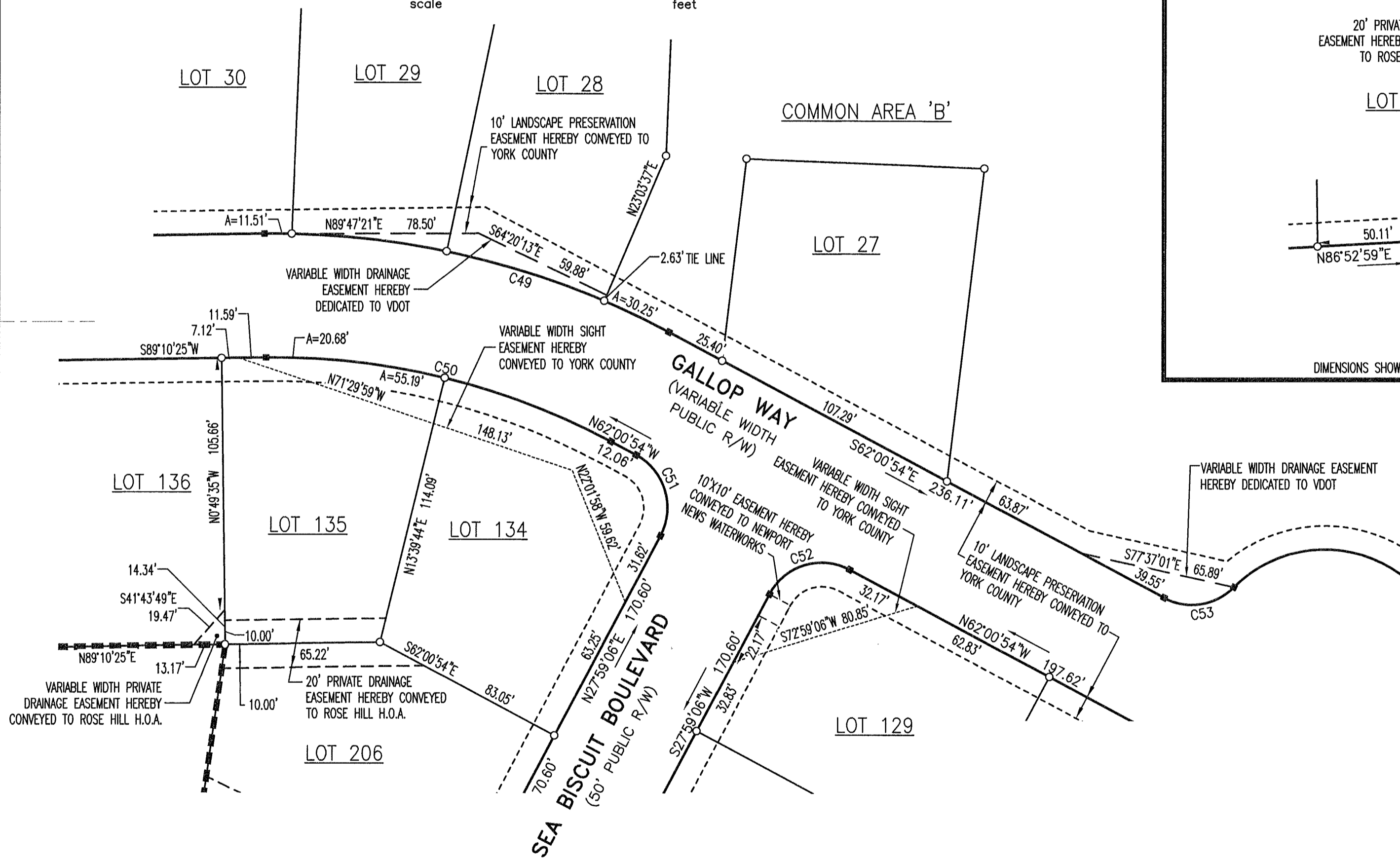


CURVE DATA					
CURVE #	RADIUS	LENGTH	DELTA	TANGENT	CHORD
C47	25.00'	38.27'	87°42'34"	24.02'	N43°01'42"E 34.64'
C48	25.00'	39.27'	90°00'00"	25.00'	S45°49'35"E 35.36'
C49	352.00'	177.00'	28°48'41"	90.42'	S76°25'15"E 175.15'
C50	300.00'	150.86'	28°48'41"	77.06'	N76°25'15"W 149.27'
C51	25.00'	39.27'	90°00'00"	25.00'	N17°00'54"W 35.36'
C52	25.00'	39.27'	90°00'00"	25.00'	S72°59'06"W 35.36'
C53	25.00'	31.88'	73°04'26"	18.52'	N81°26'53"E 29.77'
C72	25.00'	39.27'	90°00'00"	25.00'	N45°49'35"W 35.36'
C73	25.00'	39.27'	90°00'00"	25.00'	S44°10'25"W 35.36'

VIRGINIA STATE PLANE COORDINATES
SOUTH ZONE (NAD-1983)

EASEMENT INSET

DIMENSIONS SHOWN WITHIN THIS DETAIL ARE FOR EASEMENT TIES ONLY
SCALE: 1" = 40'



EASEMENT INSET

SCALE: 1" = 40'



**SUBDIVISION PLAT
ROSE HILL**

PHASE 1
AN OPEN SPACE DEVELOPMENT
TAX PARCELS: 17-00-00-149 & 17-00-00-150
NELSON DISTRICT
YORK COUNTY, VIRGINIA

DRAWN: DHW	DATE: 7/1/24	REVISION:
COMP: BJL	SCALE: 1"=40'	
CHECKED: BJL		

PARRISH LAYNE
DESIGN GROUP
Engineers • Surveyors • Planners
P.O. Box 9164, Chesapeake, VA 23321
Phone: 757.686.3345 Fax: 757.686.3348

REF: SHEET NO. **8**
INST.# 190006880 SHEET: 8 of 9

- T BAR FOUND ● T BAR FOUND
- DISK FOUND ● DISK FOUND
- CONC. MON FOUND ● CONCRETE MONUMENT FOUND
- PIPE FOUND ● PIPE FOUND
- PIN FOUND ● IRON PIN FOUND
- #5 IRON REBAR SET
- #5 IRON REBAR SET IN CONCRETE



APPROVED
YORK COUNTY BOARD OF SUPERVISORS
BY: Eason Kassel
PLAT APPROVING AGENT
DATE: August 26, 2024

STATE OF VIRGINIA
COUNTY OF YORK
IN THE CLERK'S OFFICE OF THE CIRCUIT COURT FOR THE COUNTY OF
YORK-POQUOSON, ON THIS 29 DAY OF August, 2024
THIS MAP WAS PRESENTED AND ADMITTED TO RECORD AS THE LAW
DIRECTS, AS INSTRUMENT
NUMBER 240011754
TESTE: KRISTEN N. NELSON, CLERK
BY: Debra Mahoney II
CLERK