

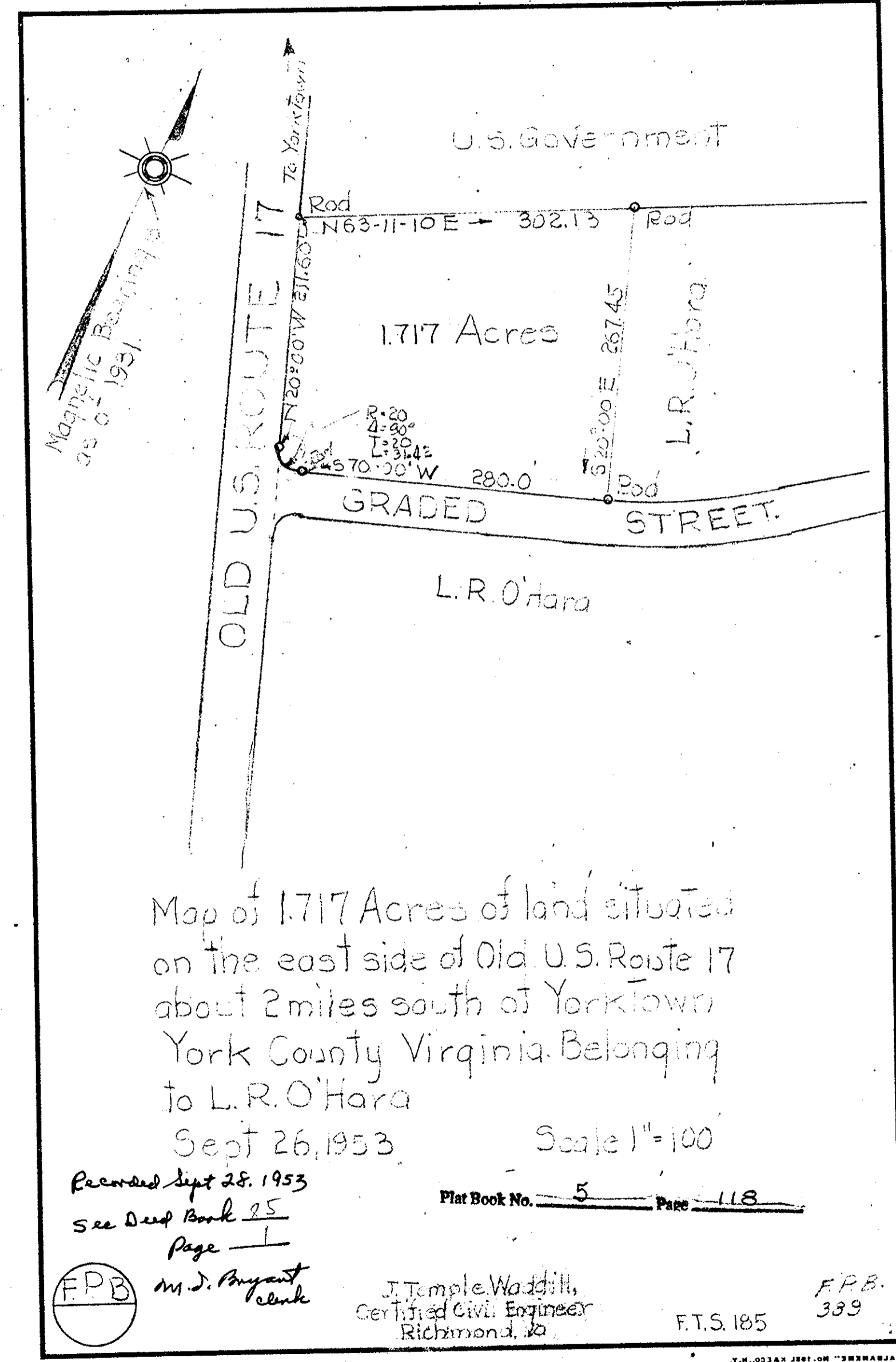
CURVE DATA	
A	B
AD - 5,634.65'	5,679.65'
ARC. DIST - 187.40'	1245.73'
TANG - 93.15'	625.39'
D - 0° 57' 12.5"	12° 34' 0.5"

In the Clerk's office of the County of York the 12th day of October, this Plat was presented and admitted to record according to law.
M. J. Bryant - Clerk.

Plat Book No. 5 Page 118

PLAT SHOWING PARCEL OF LAND BELONGING TO C. C. CASEY SITUATED IN BRUTON DISTRICT, YORK COUNTY, VA. SURVEYED SEPT, 1953 SCALE 1"=100'

NOTE: LINE A-B ESTABLISHED FROM EVIDENCE FOUND ON GROUND
LINE C-D ESTABLISHED FROM C & O RAILROAD PLAT
AREA ESTABLISHED WITH PLANIMETER.
W. D. THOMAS - C.L.S. 579.

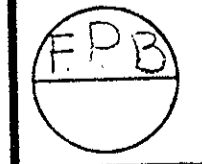


Map of 1.717 Acres of land situated on the east side of Old U.S. Route 17 about 2 miles south of Yorktown York County Virginia. Belonging to L.R. O'Hara
Sept 26, 1953

Recorded Sept 28, 1953

See Deed Book 25 Page 1

Plat Book No. 5 Page 118



M. J. Bryant
Clerk

J. Temple Watfill,
Certified Civil Engineer
Richmond, Va.

F.T.S. 185

FPB 399