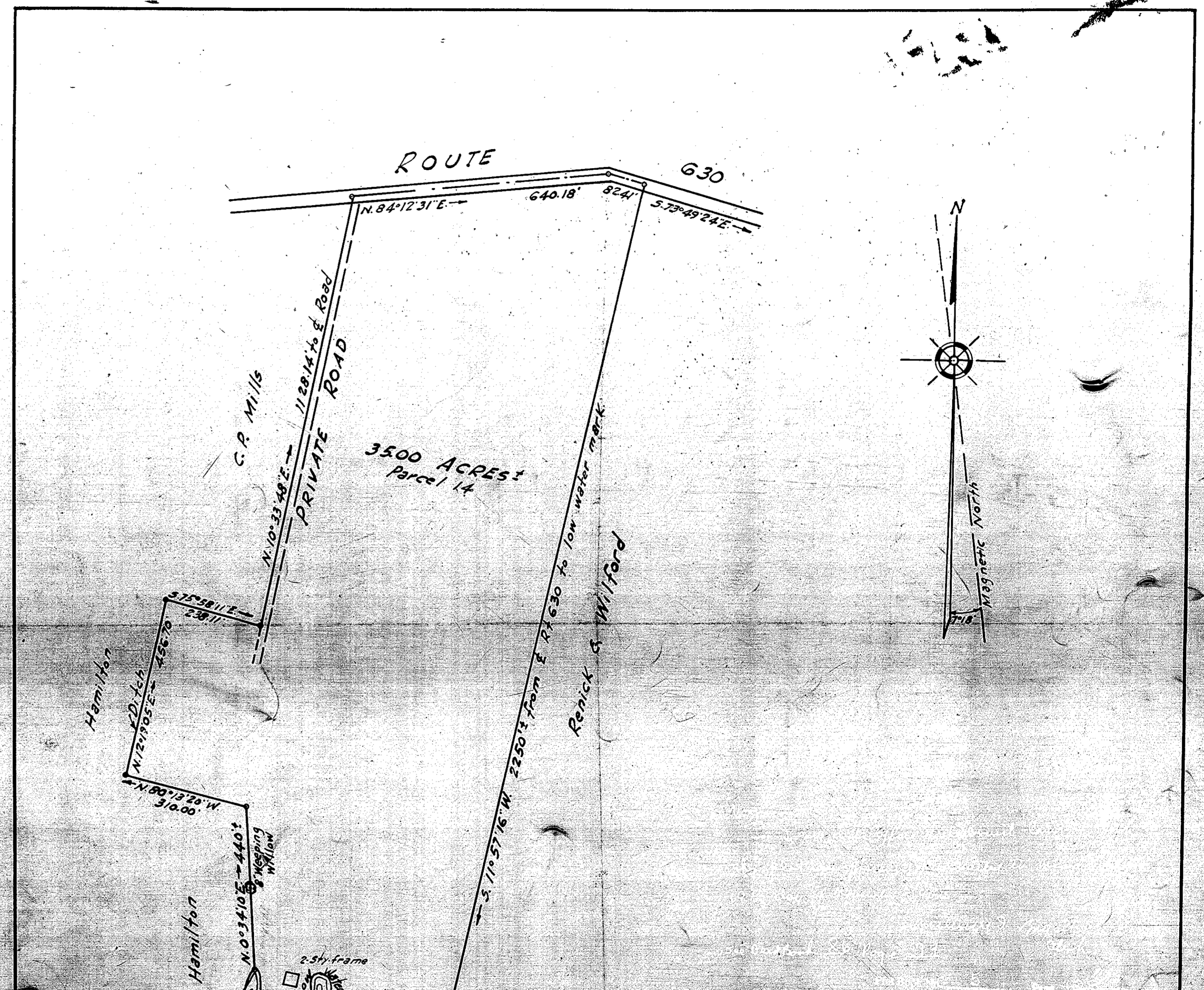


MAP SHOWING PROPERTY  
 SITUATED AT GOODWYN'S NECK  
 IN YORK COUNTY, VIRGINIA  
 STANDING IN THE NAME OF  
 ORPAH H. COOPER

SCALE 1" = 60' JULY 1953  
 SURVEYED FOR: Pan American Refining Corporation  
 J. TEMPLE WADDILL  
 CERTIFIED CIVIL ENGINEER  
 RICHMOND, VIRGINIA

Bearings refer to the plane coordinate system of the State of Va.



MAP SHOWING PROPERTY  
 SITUATED AT GOODWYN'S NECK  
 IN YORK COUNTY, VIRGINIA  
 STANDING IN THE NAME OF  
 R. M. CROCKETT

SCALE 1" = 200' AUG. 1953  
 SURVEYED FOR: Pan American Refining Corporation  
 J. TEMPLE WADDILL  
 CERTIFIED CIVIL ENGINEER  
 RICHMOND, VIRGINIA

Bearings refer to the plane coordinate system of the State of Va.

