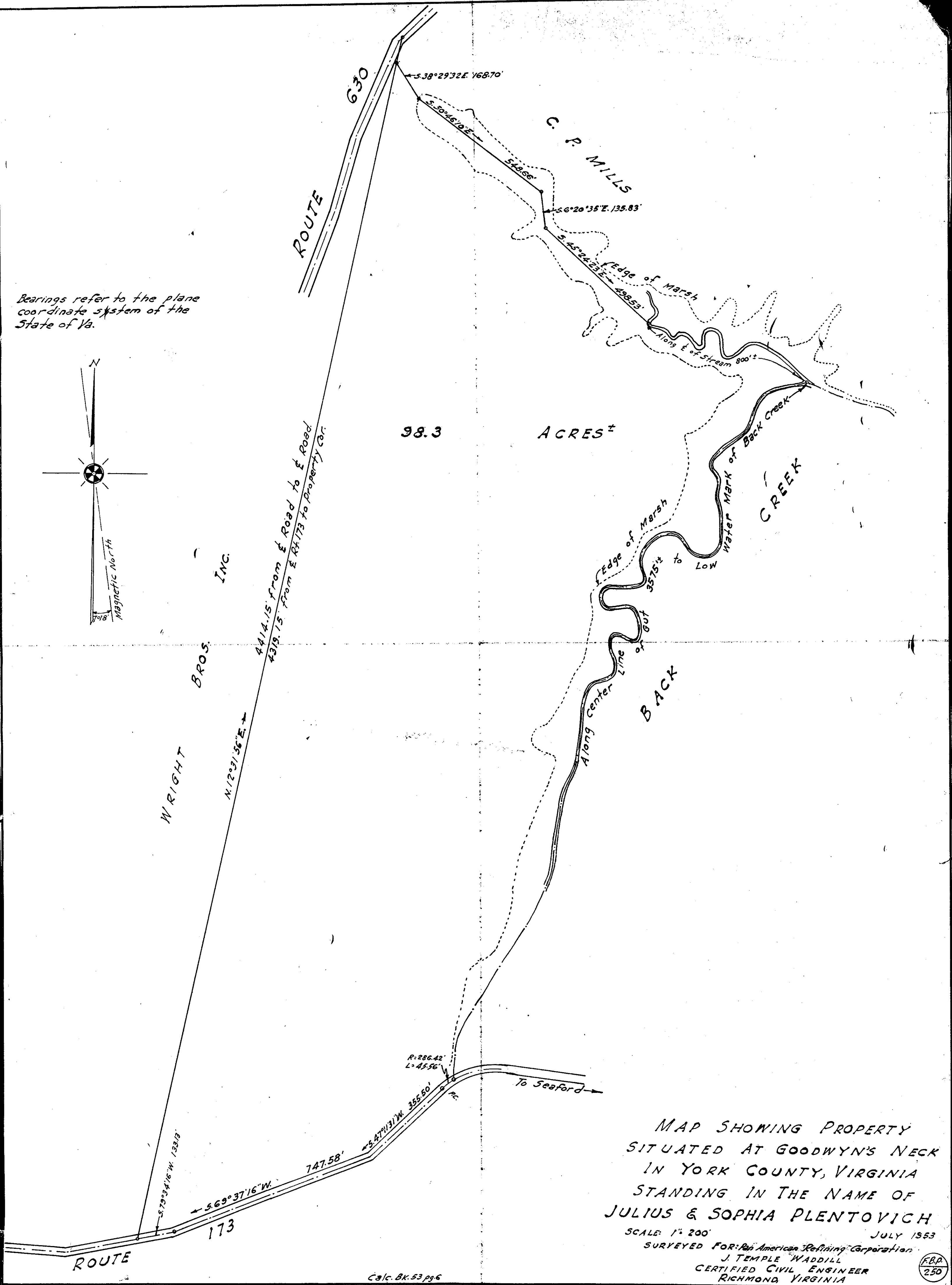
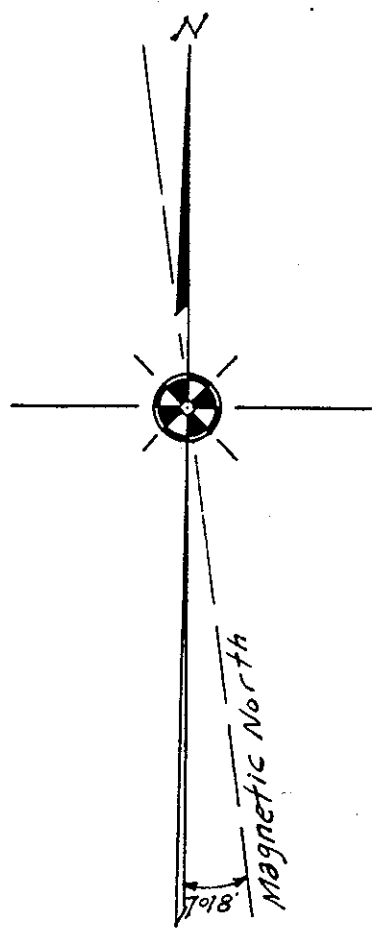


Bearings refer to the plane coordinate system of the State of Va.



MAP SHOWING PROPERTY
 SITUATED AT GOODWYN'S NECK
 IN YORK COUNTY, VIRGINIA
 STANDING IN THE NAME OF
 JULIUS & SOPHIA PLETOVICH
 SCALE: 1" = 200'
 JULY 1953
 SURVEYED FOR: Pan American Refining Corporation
 J. TEMPLE WADDILL
 CERTIFIED CIVIL ENGINEER
 RICHMOND, VIRGINIA

Calc. Bk. 53 pg. 6

F.B.P.
 250