

73.47 Acres

173

ROUTE

650

N. 63° 28' 04\"/>

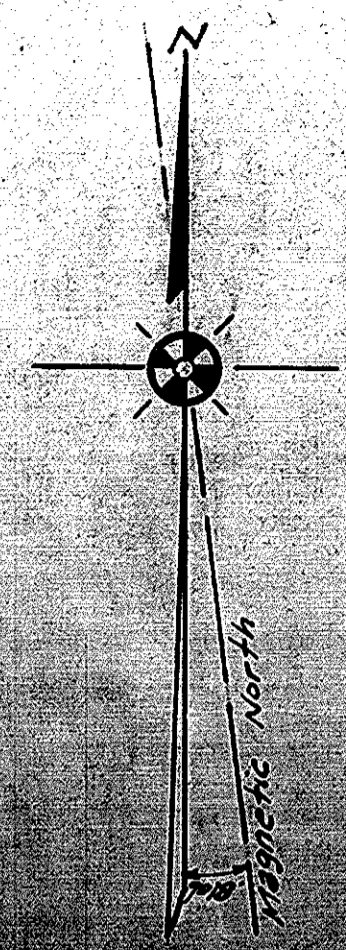
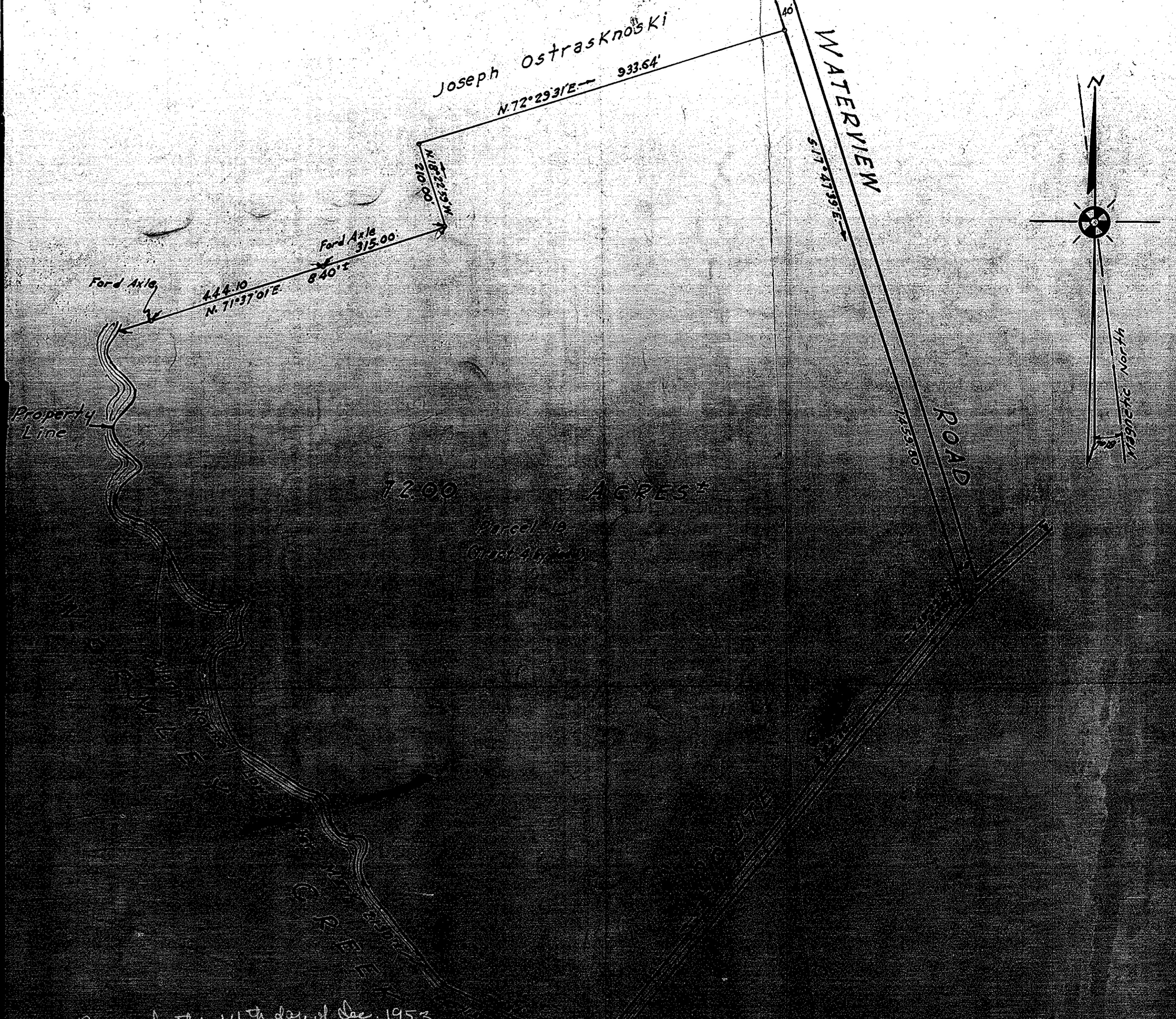
S. 71° 15' 14\"/>

S. 84° 31' 04\"/>

S. 58° 11'

S. 00° 17' 16\"/>

Recorded Dec 14 1953 see
 Plat Book — Page —
 Melville D. Bryant
 Clerk



12.00 Acres

Joseph Ostraskno's Ki

N. 72° 29' 31\"/>

WATERVIEW ROAD

S. 77° 41' 59\"/>

ROAD

S. 77° 41' 59\"/>

Property Line

Ford Axle

N. 71° 37' 01\"/>

Ford Axle

S. 15° 00'

S. 84° 00'

N. 72° 29' 31\"/>

Recorded the 14th day of Dec. 1953
 see Plat Book — Page —
 Melville D. Bryant
 Clerk