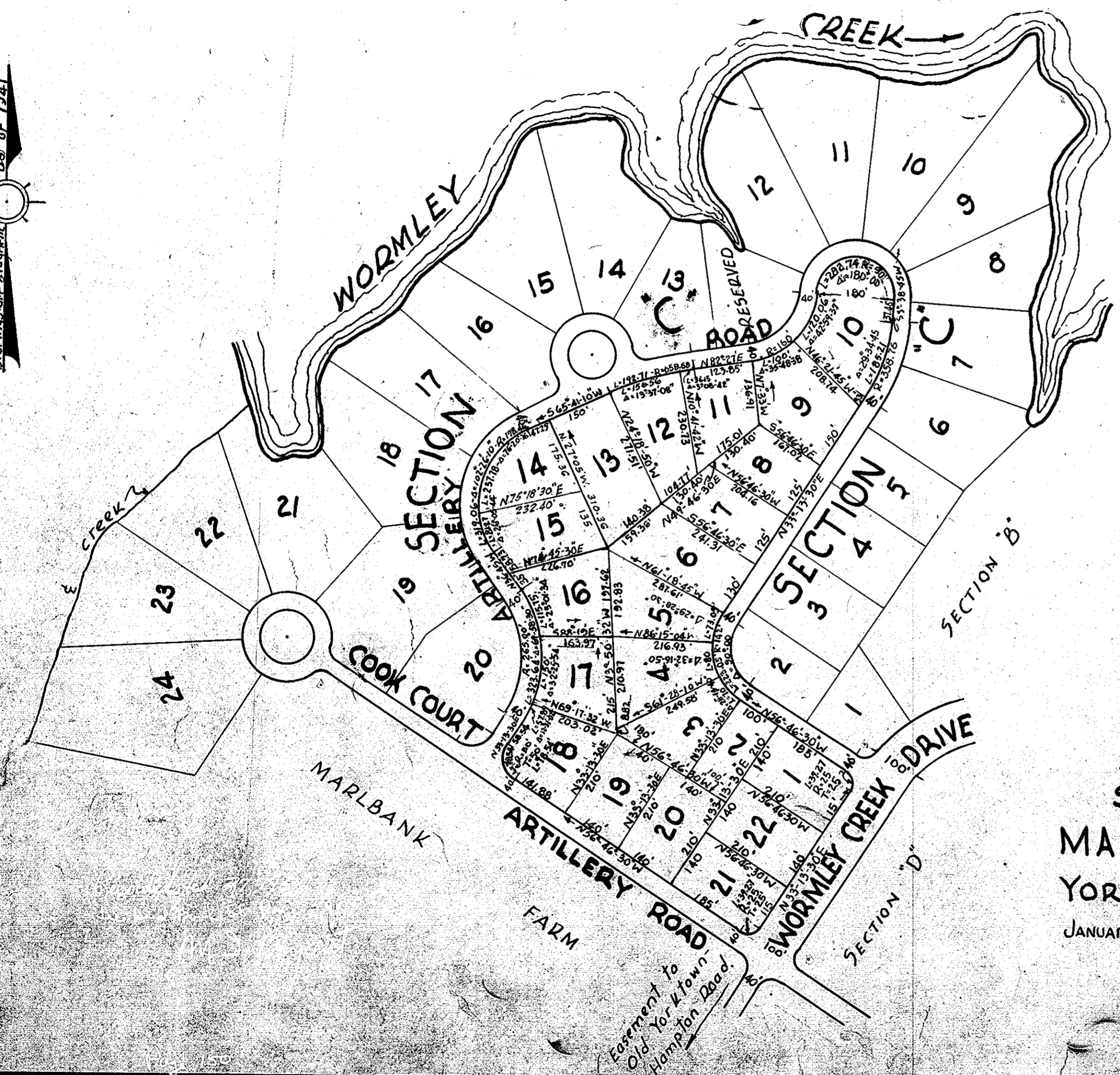
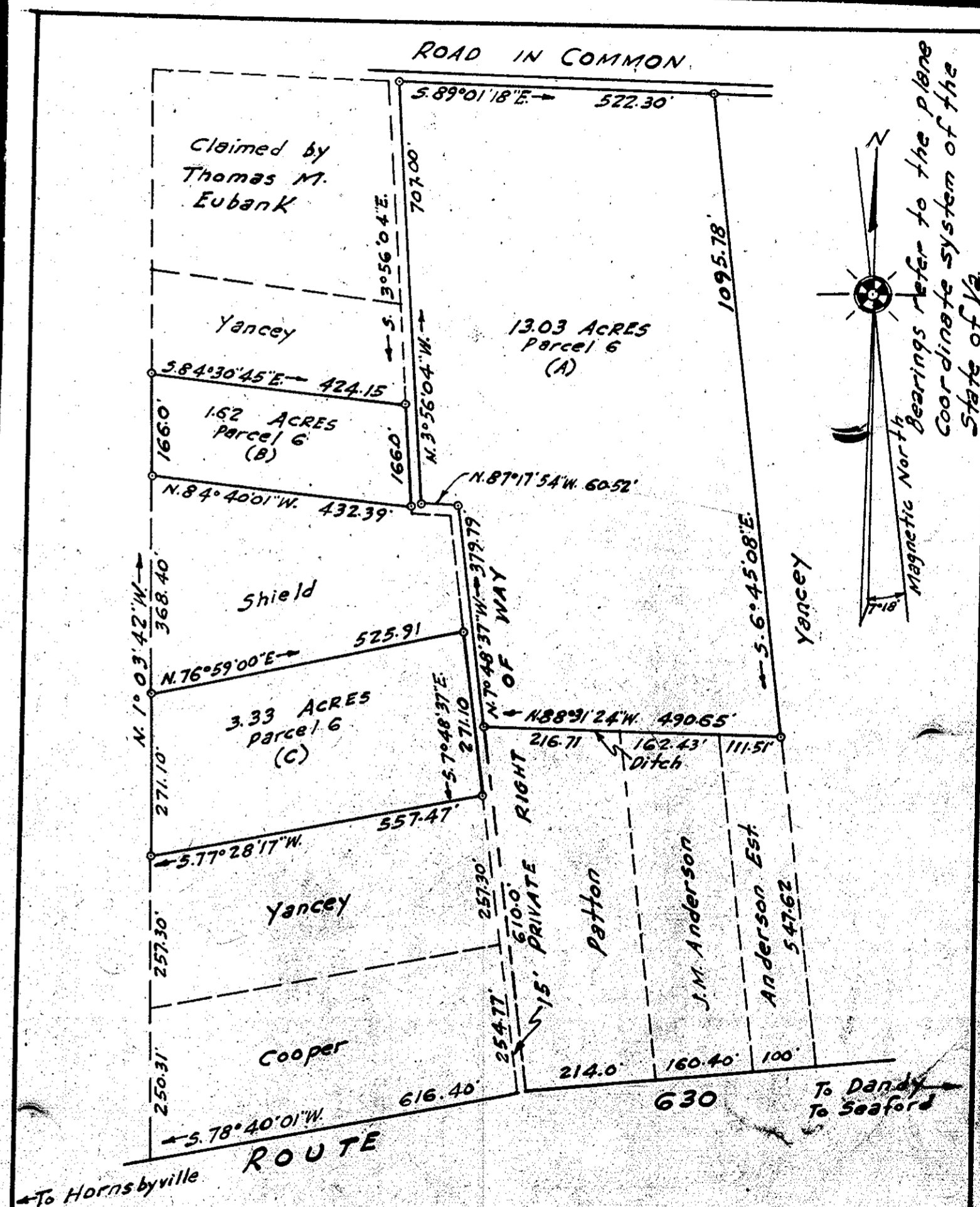


Bearings are magnetic as of 1941



MAP OF SECTION "G" SUBDIVISION OF MARLBANK FARM YORK COUNTY, VIRGINIA. JANUARY 20, 1953 SCALE 1"=200'

J. TEMPLE WADDILL  
CERTIFIED CIVIL ENGINEER  
RICHMOND, VIRGINIA.



MAP SHOWING PROPERTY SITUATED AT GOODWYN'S NECK IN YORK COUNTY, VIRGINIA STANDING IN THE NAME OF HENRY LANE HARDISTER, RICHARD E. DIEHL AND GILBERT E. DIEHL SCALE: 1"=200' AUG. 1953 SURVEYED FOR THE AMERICAN RETIREMENT CORPORATION J. Temple Waddill, Certified Civil Engineer, Richmond, Virginia.

