

*"Nickerson Montgomery Estate"*  
MONTGOMERY - SEAFORD

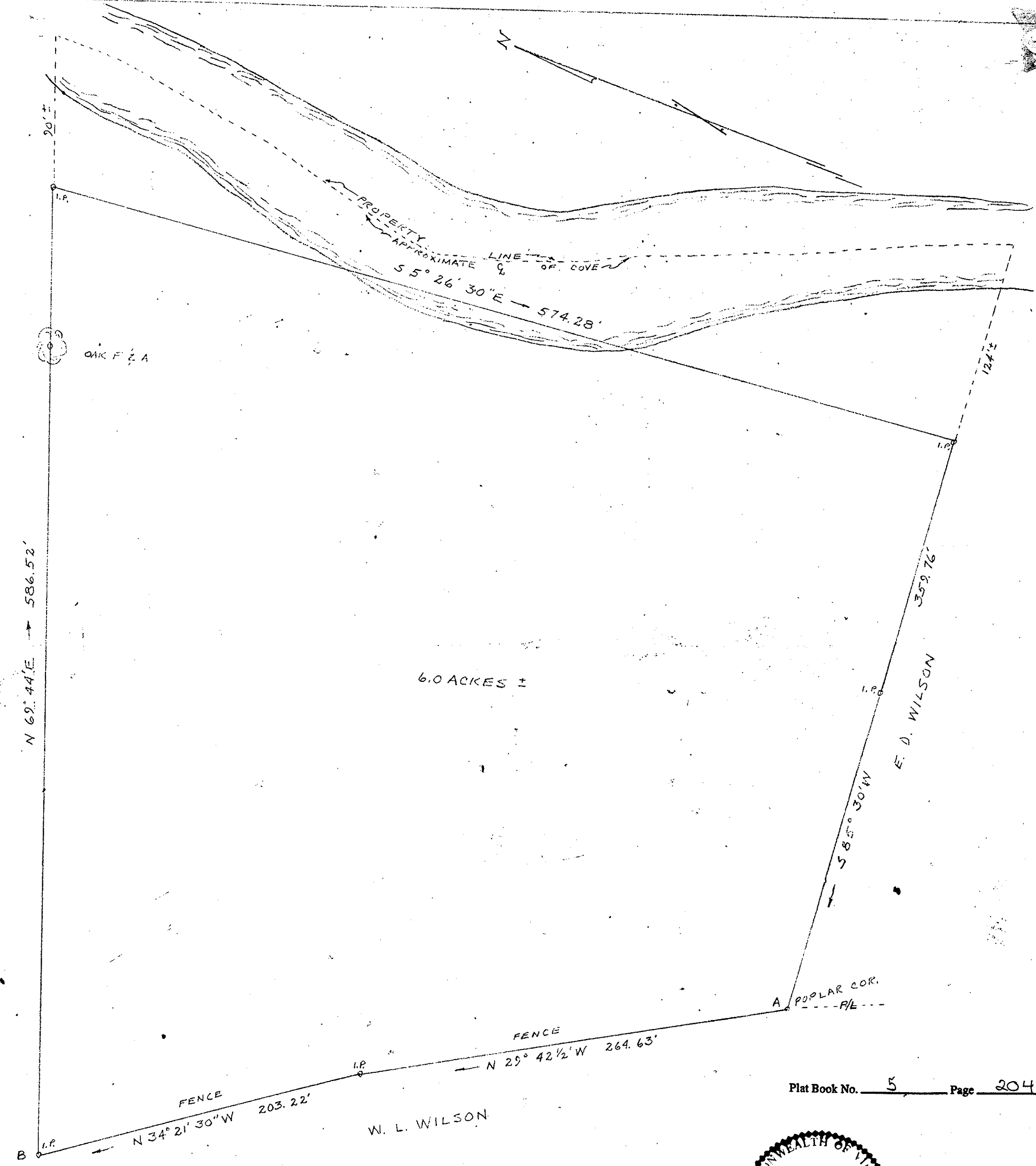
PLAT SHOWING PARCELS OF LAND BELONGING TO O.P. MONTGOMERY, H.W. MONTGOMERY ESTATE & GRADY MONTGOMERY EXCEPTING PART 'E' & 'G' WHICH HAVE BEEN CONVEYED FROM THE ORIGINAL TRACT, SITUATED SEAFORD, VA, YORK COUNTY SURVEYED JULY, 1955 SCALE 1"=100'

NOTE - LINE A-B AND C-D ARE BASE LINES, PROPERTY LINE BEING CENTER OF IRREGULAR DITCHES & COVES.



Sig. Wetherill D. Thomas

*Recorded August 19, 1955, Clerk's Office, York Co., Va.*



PARCEL SURVEY - E.D. & MAUDE WILSON  
PLAT SHOWING PORTION OF LAND BELONGING TO E.D. & MAUDE WILSON SITUATED IN BETHEL DISTRICT, YORK COUNTY, VA.  
SURVEYED JULY, 1955 SCALE 1"=50'

NOTE - LINE A-B ESTABLISHED AFTER CONSULTATION WITH ADJOINING PROPERTY OWNERS.



Sig. Wetherill D. Thomas

*Recorded August 2, 1955 York County Clerk's Office*