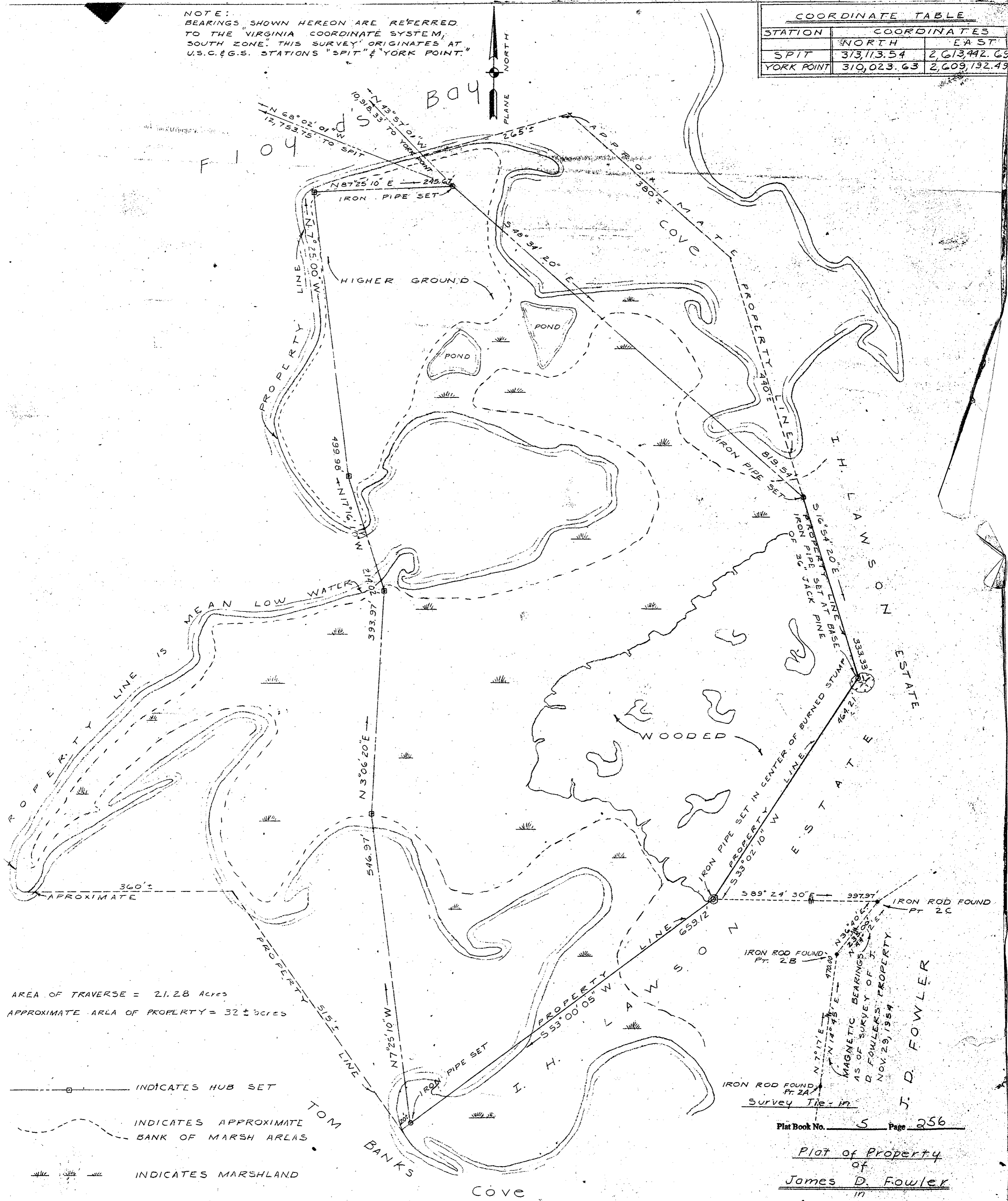


NOTE: BEARINGS SHOWN HEREON ARE REFERRED TO THE "VIRGINIA COORDINATE SYSTEM, SOUTH ZONE." THIS SURVEY ORIGINATES AT U.S.C. & G.S. STATIONS "SPIT" & "YORK POINT."

COORDINATE TABLE		
STATION	COORDINATES	
	NORTH	EAST
SPIT	313,113.54	2,613,442.63
YORK POINT	310,023.63	2,609,192.49



AREA OF TRAVERSE = 21.28 Acres  
 APPROXIMATE AREA OF PROPERTY = 32 ± acres

- INDICATES HUB SET
- - - - - INDICATES APPROXIMATE BANK OF MARSH AREAS
- ||||| INDICATES MARSHLAND
- - - - - INDICATES TRAVERSE LINE

Filed to the Clerk's Office for 19th day of July 1957  
 M. C. Dischinger  
 H. C. Dischinger

H. C. Dischinger  
 H. C. DISCHINGER C.E. & C.L.S.

Plat Book No. 5 Page 256

Plat of Property of James D. Fowler in Poquoson District York County, Va.

MURRAY & DISCHINGER ENGINEERS  
 NEWPORT NEWS, VA.

Scale: 1"=100 Date: July 12, 1957

256