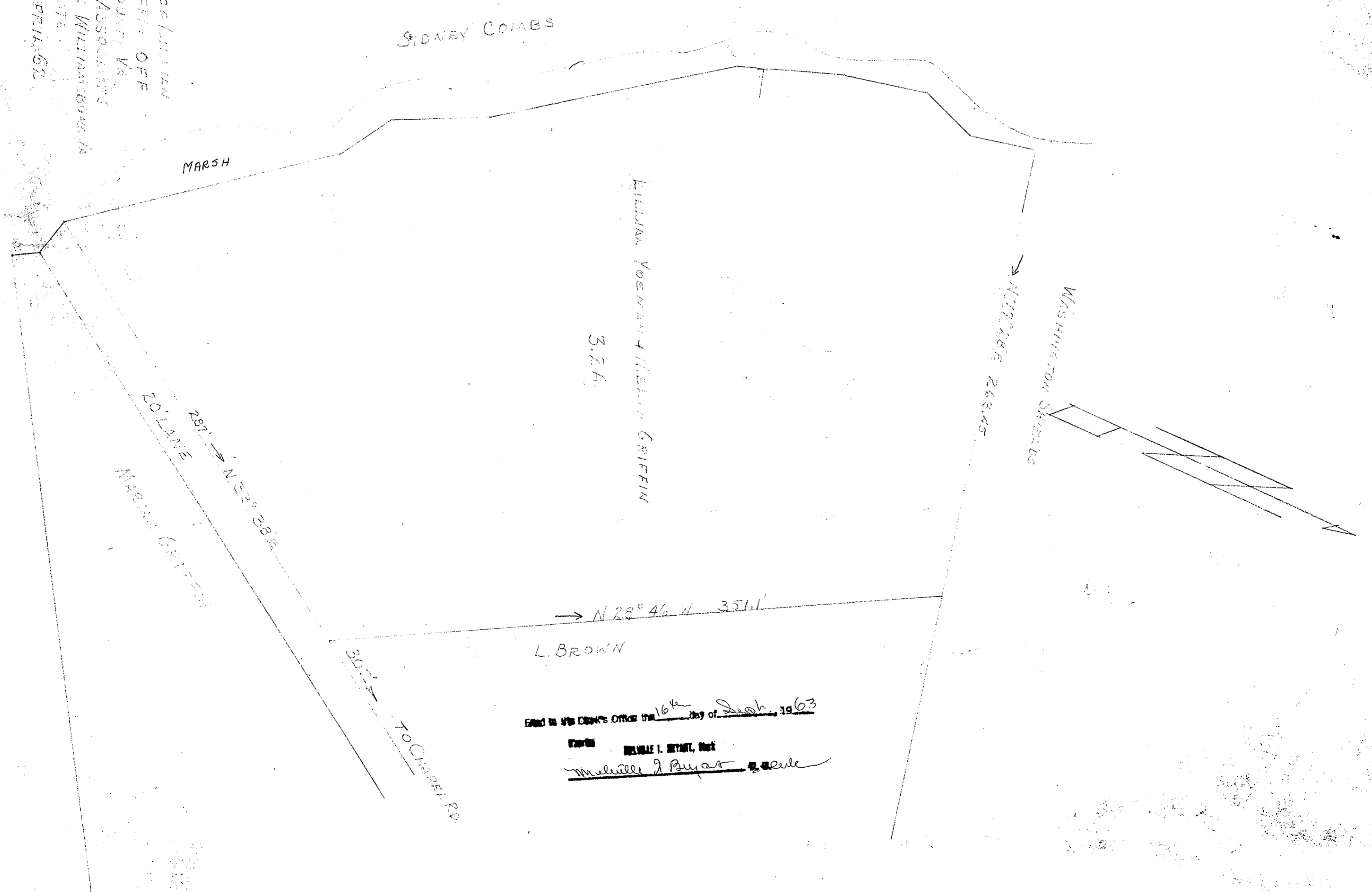


SURVEY OF PROPERTY OF LILLIAN  
YOEMAN + MELVIN GRIFFIN OFF  
CHAPEL ROAD YORK COUNTY VA  
VINCENT D. MILLER & ASSOCIATES  
ENGINEERS + SURVEYORS MILLERSBURG VA  
BY FAITH BULLITT ASSOCIATES  
SCALE 1"=40' APRIL 63



Filed in the Clerk's Office the 16th day of April, 1963

By Melville J. Bryant Recorder