

Plat Book No. 7 Page 117

PROPOSED ADDITION TO  
A PORTION OF MARLBANK  
FARM - SECTION J, YORK  
COUNTY, VIRGINIA.  
Nov. 6, 1964 Scale 1"=100'

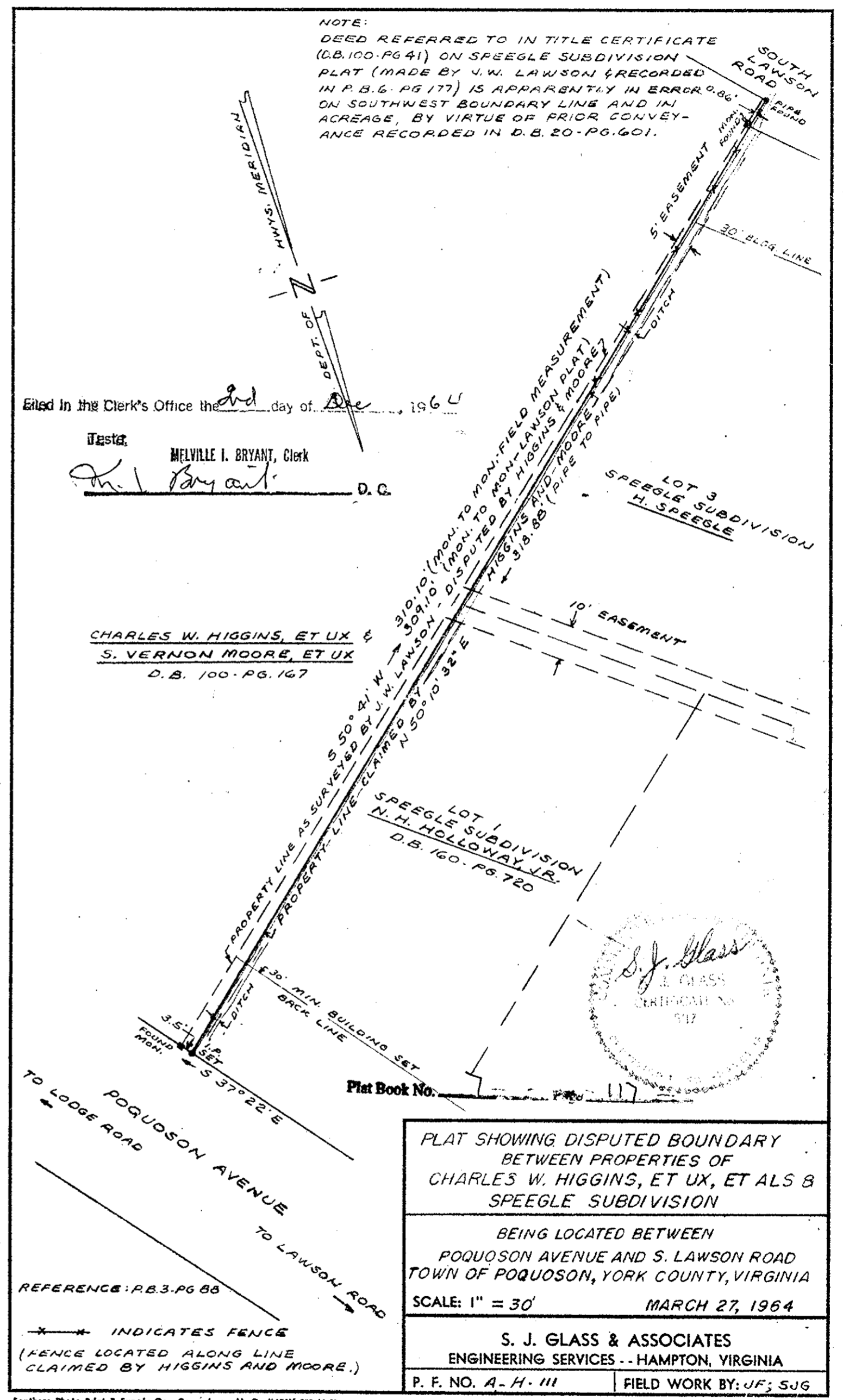
J. K. TIMMONS  
CIVIL ENGINEER  
RICHMOND, VA.

J.N. 207

10th December 64

*Colville H. Moore*  
Plat Book 7, page 117

YORK COUNTY CLERK OF COURTS  
*Earnest L. Shaffer*  
DECEMBER 10, 1964



NOTE:  
DEED REFERRED TO IN TITLE CERTIFICATE  
(D.B. 100-PG 41) ON SPEEGLE SUBDIVISION  
PLAT (MADE BY J. W. LAWSON & RECORDED  
IN P.B.G. PG 177) IS APPARENTLY IN ERROR 0.86'  
ON SOUTHWEST BOUNDARY LINE AND IN  
ACREAGE, BY VIRTUE OF PRIOR CONVEY-  
ANCE RECORDED IN D.B. 20-PG. 601.

Filed in the Clerk's Office the 2nd day of Dec, 1964

Tested:  
*Melville I. Bryant*  
D. C.

CHARLES W. HIGGINS, ET UX &  
S. VERNON MOORE, ET UX  
D.B. 100-PG. 167

LOT 1  
SPEEGLE SUBDIVISION  
N. H. HOLLOWAY, JR.  
D.B. 160-PG. 720

*S. J. Glass*  
S. J. GLASS  
CERTIFICATE NO.  
917

PLAT SHOWING DISPUTED BOUNDARY  
BETWEEN PROPERTIES OF  
CHARLES W. HIGGINS, ET UX, ET ALS &  
SPEEGLE SUBDIVISION  
BEING LOCATED BETWEEN  
POQUOSON AVENUE AND S. LAWSON ROAD  
TOWIN OF POQUOSON, YORK COUNTY, VIRGINIA  
SCALE: 1" = 30' MARCH 27, 1964

S. J. GLASS & ASSOCIATES  
ENGINEERING SERVICES - - HAMPTON, VIRGINIA  
P. F. NO. A-H-111 FIELD WORK BY: JF; SJG