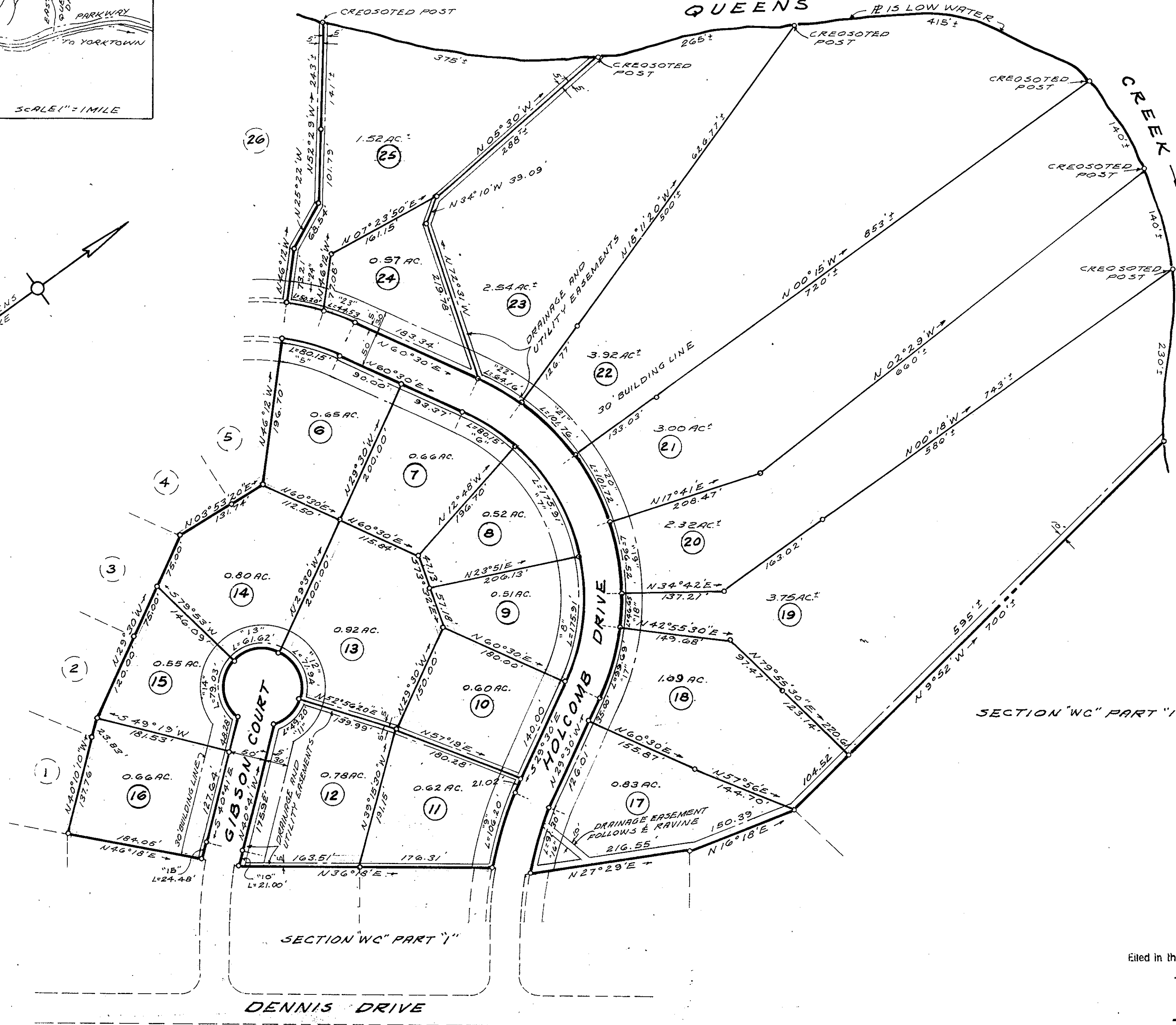


SEE SHEET '2'



SECTION "WC" PART "1"

Filed in the Clerk's Office the 11th day of Oct. 1965

Teste:
 MELVILLE J. BRYANT, Clerk
Edith M. Bryant D. C.

File Book No. 7 Page 160

McMANUS, MROCK & McMANUS
 CIVIL ENGINEER-LAND SURVEYORS
 WILLIAMSBURG, VIRGINIA

TOTAL AREA THIS SECTION = 41.3 ACRES ±
 IRON PIPE MARKERS SHOWN THUS - O
 CONCRETE MONUMENTS SHOWN THUS - □

QUEENS LAKE
 SECTION "WD" PART "1"
 QUEENS LAKE DEVELOPMENT CO., INC.
 BRUTON DISTRICT
 YORK COUNTY, VIRGINIA
 SCALE: 1"=100' SEPT. 10, 1965
 SHEET 1 OF 2