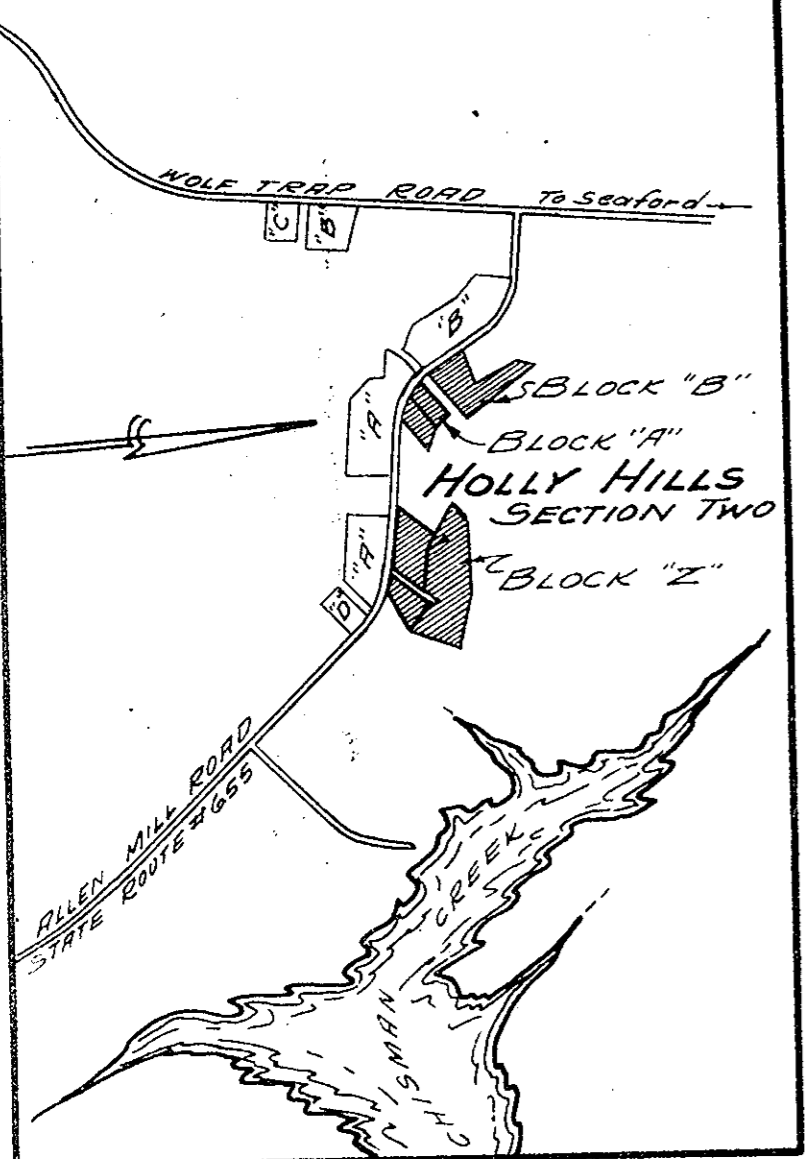
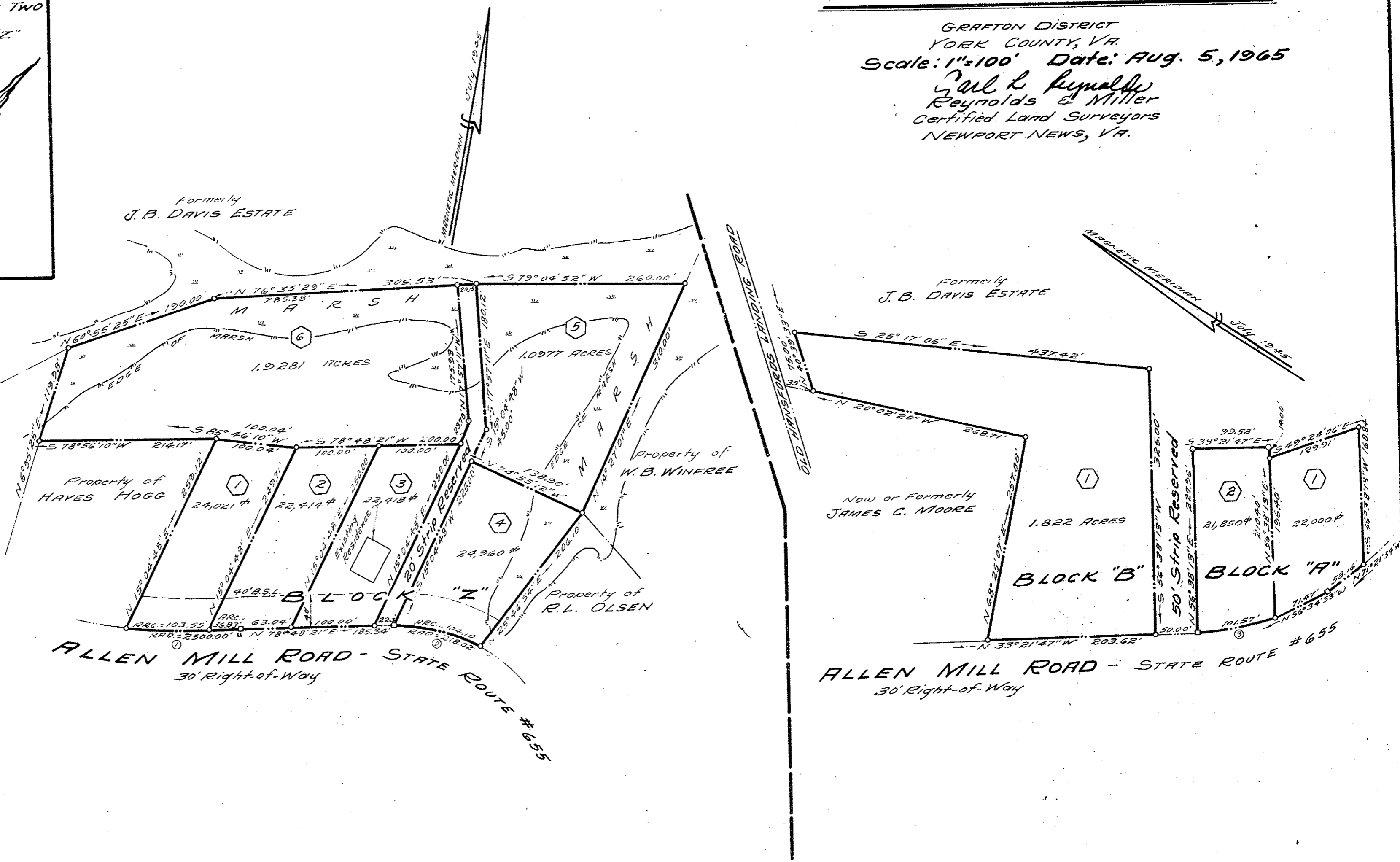


PLAT SHOWING
 PARCELS OF LAND
 CONTAINING
 1/2 ACRE OR MORE
 AND DESIGNATED AS
HOLLY HILLS-SECTION TWO

GRAFTON DISTRICT
 YORK COUNTY, VA.
 Scale: 1"=100' Date: Aug. 5, 1965
Carl L Reynolds
Raymond E Miller
 Certified Land Surveyors
 NEWPORT NEWS, VA.



VICINITY MAP
 Scale: 1"=1000'



APPROVED
 YORK COUNTY BOARD OF SUPERVISORS
 BY *William J. Garnut*
 PLAT APPROVING AGENT.
 DATE 9-23-65
 VARIATIONS APPROVED
 DATE _____

Filed in the Clerk's Office the 23rd day of Sept. 1965

Teste
 MELVILLE I. BRYANT, Clerk
M. I. Bryant

No.	DELTA	RADIUS	TANGENT	ARC	CHORD	CHORD BEARING
1	3°13'02"	2500.00	70.21'	140.38'	140.36'	S 80°25'10" W
2	27°21'27"	218.02'	53.06'	104.10'	103.11'	S 87°30'36" E
3	20°00'06"	290.95'	51.31'	101.57'	101.05'	N 43°21'50" E