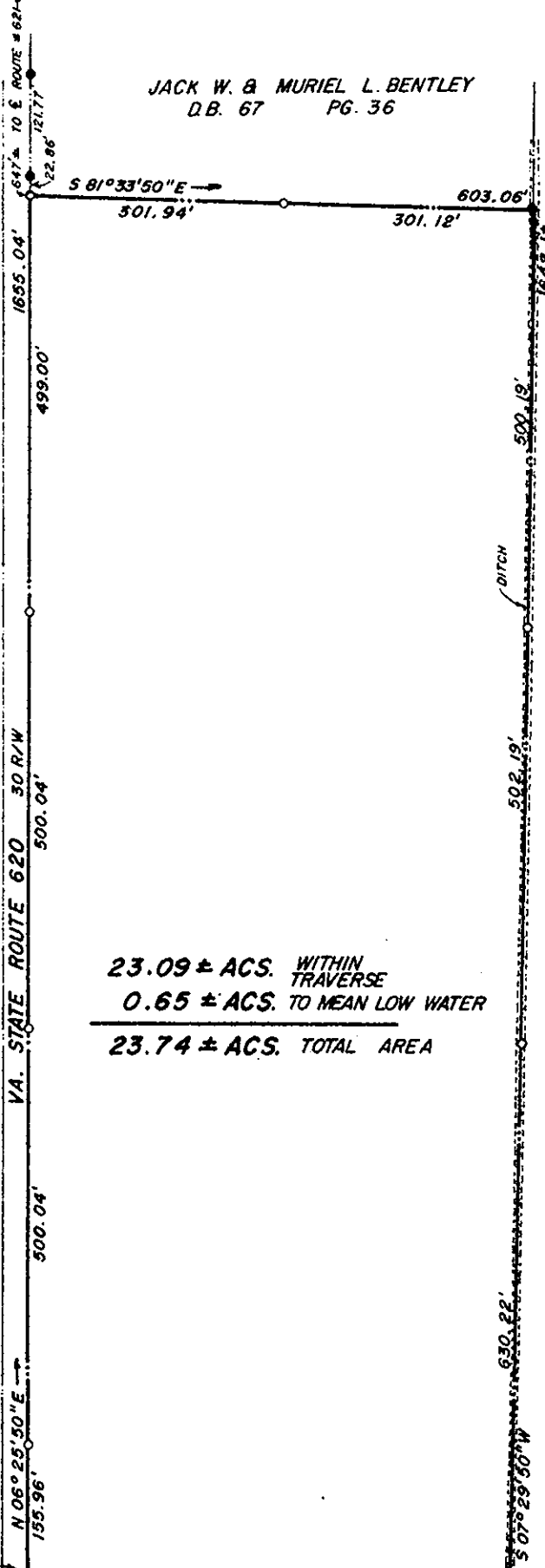


JACK W. & MURIEL L. BENTLEY
D.B. 67 PG. 36

MAG. MERIDIAN BASED ON PLAT OF
SECTION "A" HOLLY POINT IN PB. 6 PG. 145



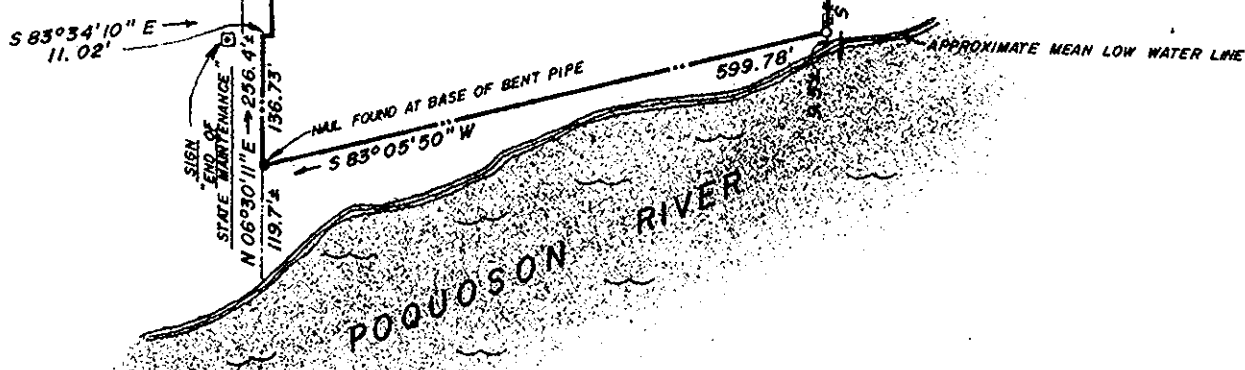
23.09 ± ACS. WITHIN TRAVERSE
 0.65 ± ACS. TO MEAN LOW WATER
 23.74 ± ACS. TOTAL AREA

SUSANNA Y. MONTAGUE
 D. B. 62 PG. 267

Jul 9 1976
 Received at _____ o'clock in the Clerk's Office of
 York County, Va., with certificate annexed and re-
 corded in Book _____ Page _____ and
 examined. State Tax \$ _____ Local Tax \$ _____

Edith M. Elliott Clerk

Edith M. Elliott



○ PIPE SET
 ● PIPE FOUND

REFERENCES: DB. 118 PG. 232
 DB. 60A PG. 271
 DB. 58 PG. 583
 DB. 55 PG. 149
 DB. 46 PG. 229

Hugh C. Dischinger
 HUGH C. DISCHINGER P.E. & C.L.S.

PLAT OF PROPERTY OF
GEORGE B. COLONNA
 GRAFTON DISTRICT
 YORK COUNTY, VIRGINIA

Murray & Dischinger — Engineers
 Newport News & Hampton, Virginia

Scale: 1" = 200'
 Date: FEB. 4, 1976
 Job No. 76 - 1 - 1339

Revisions: