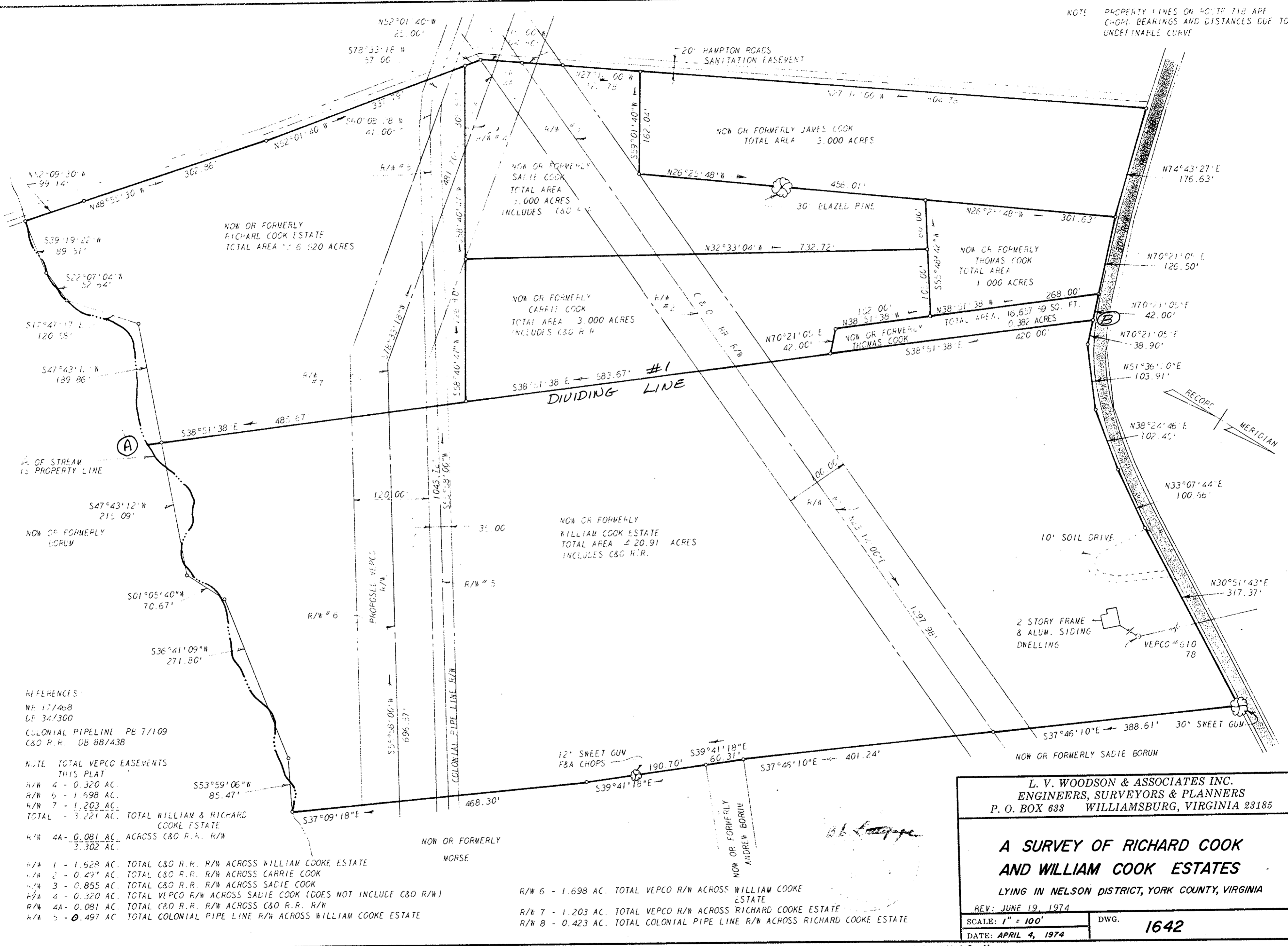


NOTE: PROPERTY LINES ON 40:17 718 ARE CHOMP BEARINGS AND DISTANCES DUE TO UNDEFINABLE CURVE



REFERENCES:  
 WE 17/468  
 DE 34/300  
 COLONIAL PIPELINE PE 7/109  
 C&O R.R. DB 88/438

NOTE: TOTAL VEPCO EASEMENTS THIS PLAT  
 R/W 4 - 0.320 AC.  
 R/W 6 - 1.698 AC.  
 R/W 7 - 1.203 AC.  
 TOTAL - 3.221 AC.

TOTAL WILLIAM & RICHARD COOKE ESTATE  
 R/W 4A - 0.081 AC. ACROSS C&O R.R. R/W 3.302 AC.  
 R/W 1 - 1.528 AC. TOTAL C&O R.R. R/W ACROSS WILLIAM COOKE ESTATE  
 R/W 2 - 0.497 AC. TOTAL C&O R.R. R/W ACROSS CARRIE COOK  
 R/W 3 - 0.855 AC. TOTAL C&O R.R. R/W ACROSS SADIE COOK  
 R/W 4 - 0.320 AC. TOTAL VEPCO R/W ACROSS SADIE COOK (DOES NOT INCLUDE C&O R/W)  
 R/W 4A - 0.081 AC. TOTAL C&O R.R. R/W ACROSS C&O R.R. R/W  
 R/W 5 - 0.497 AC. TOTAL COLONIAL PIPE LINE R/W ACROSS WILLIAM COOKE ESTATE

R/W 6 - 1.698 AC. TOTAL VEPCO R/W ACROSS WILLIAM COOKE ESTATE  
 R/W 7 - 1.203 AC. TOTAL VEPCO R/W ACROSS RICHARD COOKE ESTATE  
 R/W 8 - 0.423 AC. TOTAL COLONIAL PIPE LINE R/W ACROSS RICHARD COOKE ESTATE

L. V. WOODSON & ASSOCIATES INC.  
 ENGINEERS, SURVEYORS & PLANNERS  
 P. O. BOX 638 WILLIAMSBURG, VIRGINIA 23185

**A SURVEY OF RICHARD COOK AND WILLIAM COOK ESTATES**  
 LYING IN NELSON DISTRICT, YORK COUNTY, VIRGINIA

REV: JUNE 19, 1974  
 SCALE: 1" = 100'  
 DATE: APRIL 4, 1974  
 DWG. 1642

Filed in the Clerk's Office, Circuit Court, York Co., Va.  
 the 27th day of February 1976

Teste:  
 Edith M. Elliott, Clerk  
 Betty Hansel, D. C.