

# BRANDYWINE

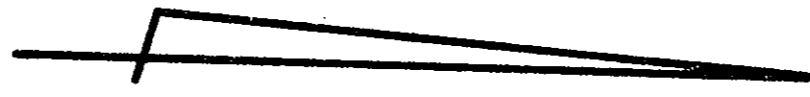
## SECTION TWO

### COUNTY OF YORK

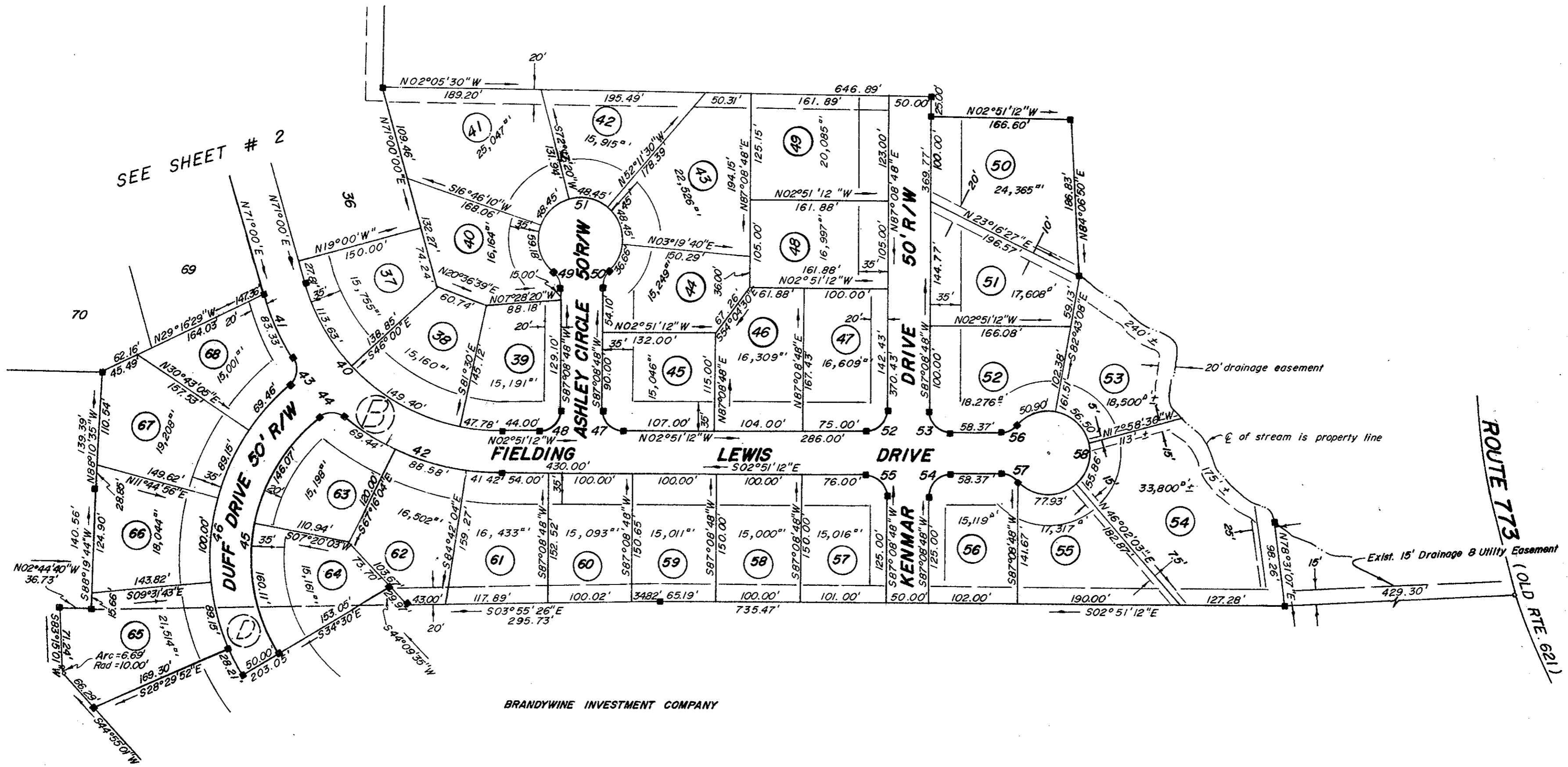
### VIRGINIA

**COENEN & ASSOCIATES, INC.**  
 ENGINEERS — PLANNERS — SURVEYORS  
 696 J. CLYDE MORRIS BLVD. — NEWPORT NEWS, VA.  
 SCALE: 1" = 100'      DATE: APRIL 15, 1977

SHEET THREE OF THREE SHEETS



BRANDYWINE INVESTMENT COMPANY



BRANDYWINE INVESTMENT COMPANY

CURVE DATA TABLE						CURVE DATA TABLE						
NO.	DELTA	RAD.	TAN.	ARC	CHORD	NO.	DELTA	RAD.	TAN.	ARC	CHORD	CHD. BRG.
40	73°51'12"	241.12'	181.21'	310.81'	289.73'	49	48°11'24"	25.00'	11.18'	21.03'	20.41'	S63°03'06"W
41	16°23'58"	291.12'	41.95'	83.33'	83.04'	50	48°11'24"	25.00'	11.18'	21.03'	20.41'	N68°45'30"W
42	39°15'10"	291.12'	103.81'	199.44'	195.57'	51	276°22'48"	50.00'	—	241.19'	—	—
43	80°53'58"	25.00'	21.31'	35.30'	32.44'	52	90°00'00"	25.00'	25.00'	39.27'	35.36'	N47°51'12"W
44	80°53'58"	25.00'	21.31'	35.30'	32.44'	53	90°00'00"	25.00'	25.00'	39.27'	35.36'	N42°08'48"E
45	80°00'00"	219.28'	184.00'	306.18'	281.90'	54	90°00'00"	25.00'	25.00'	39.27'	35.36'	N47°51'12"W
46	80°00'00"	269.28'	225.95'	375.99'	346.18'	55	90°00'00"	25.00'	25.00'	39.27'	35.36'	N42°08'48"E
47	90°00'00"	25.00'	25.00'	39.27'	35.36'	56	48°11'24"	25.00'	11.18'	21.03'	20.41'	N26°56'54"W
48	90°00'00"	25.00'	25.00'	39.27'	35.36'	57	48°11'24"	25.00'	11.18'	21.03'	20.41'	N21°14'30"E
						58	276°22'48"	50.00'	—	241.19'	—	—

Filed in the Clerk's Office, Circuit Court, York Co., Va.  
 the 1<sup>st</sup> day of June 1977

Teste:  
 Edith M. Elliott, Clerk  
*Retha B. Bender, C.*

Plat Book No. 9 Page 153