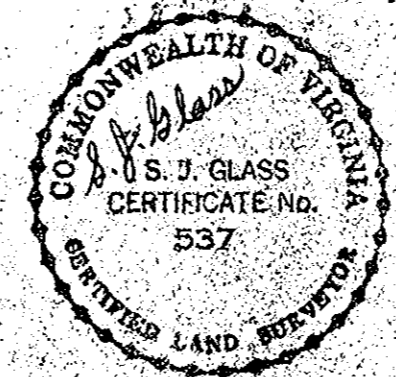
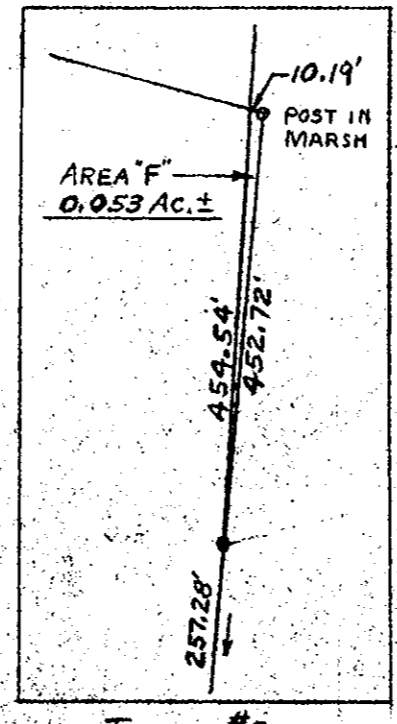
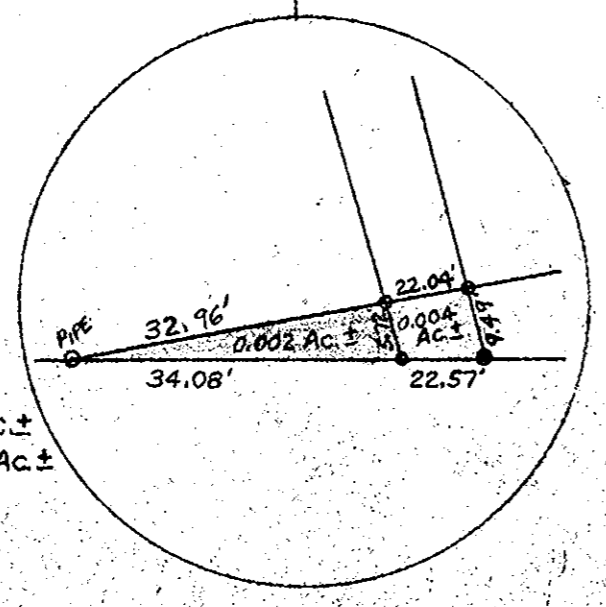


NOTES:
 Acreages shown are to edge of road.
 Survey based upon plat by J.M. Cochran, Deed information recorded in Clerks office of York County, testimony of long time residents, and physical evidences found upon the ground.
 AREAS A & B are disputed by H.A. WARNICK
 AREAS C, D, E, & F are contested by reason of errors of Survey.
 ⊕ Does not include contested Areas.

LEGEND
 Areas shaded red; claimed by Warnick. = 1.020 Ac. ±
 Area shaded green; claimed by Johnson Estate = 0.757 Ac. ±
 Area shaded Yellow; claimed by Francis T. Robinson = 0.053 Ac. ±



Filed in the Clerk's Office, Circuit Court, York Co., Va.
 the 15th day of Aug 19 58
 Teste:

Edith McElliott, Clerk
Edith McElliott

— PLAT OF PROPERTY —
 ERNEST JOHNSON ESTATE
 HOWARD A. WARNICK
 GEORGE L. WOOD
 SHOWING DISPUTED BOUNDARIES
 LOCATED IN GRAFTON DISTRICT
 YORK COUNTY, VIRGINIA
 SCALE: 1" = 100' AUGUST 11, 1958
 S. J. GLASS & ASSOCIATES
 CIVIL ENGINEERS & LAND SURVEYORS
 HAMPTON, VIRGINIA