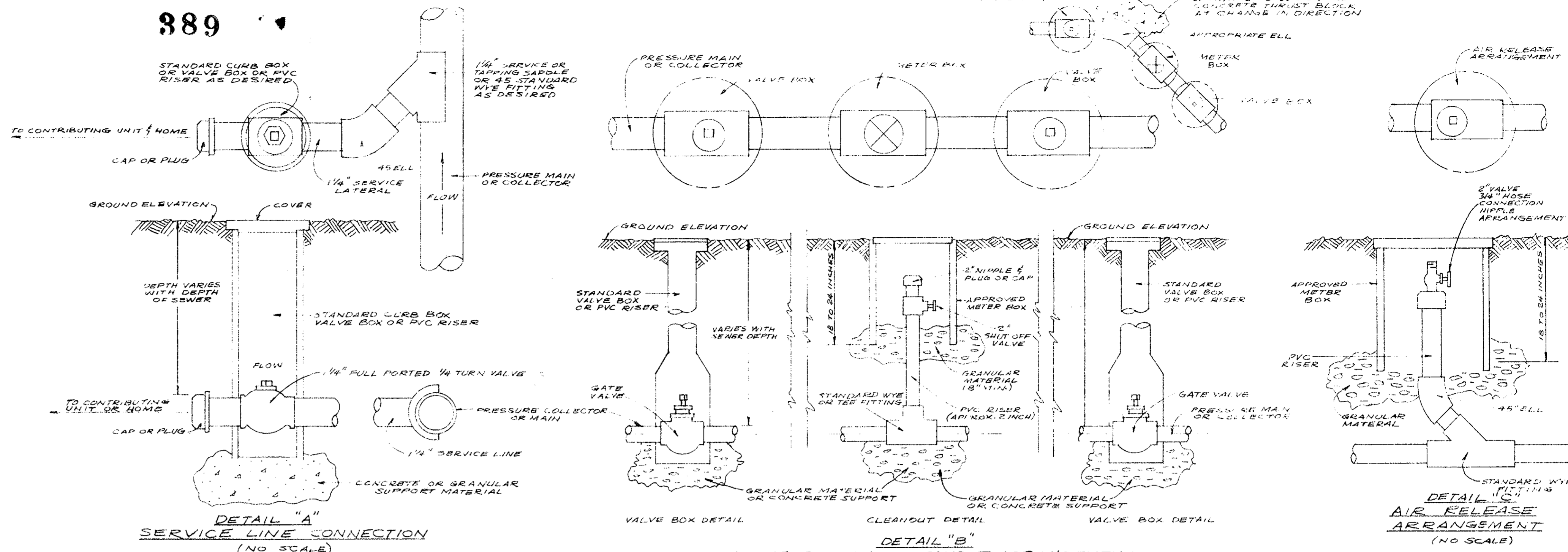


Filed in the Clerk's Office, Circuit Court, York Co., Va.  
the 30th day of September 1989

Teste:  
Edith M. Elliott, Clerk  
Newport News, D.C.

Flat Book No. 9 Pages 389 & 390

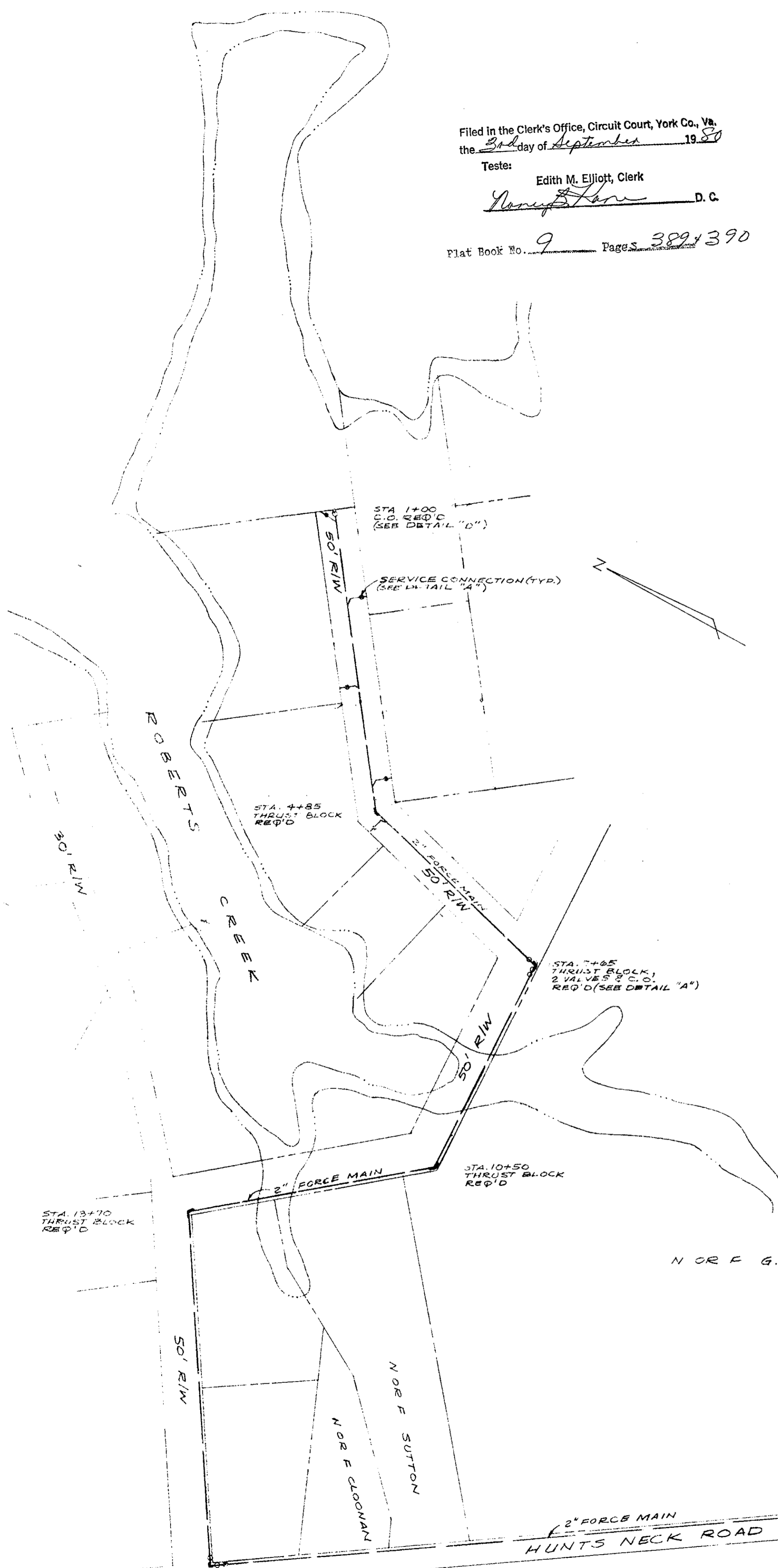


DETAIL "A"  
SERVICE LINE CONNECTION  
(NO SCALE)

VALVE BOX AND CLEANOUT ARRANGEMENTS  
WITH BOXES SEPARATE FROM CLEANOUTS ON LINES  
(NO SCALE)

DETAIL "D"  
VALVE BOX AND CLEANOUT ARRANGEMENTS  
AT END OF PRESSURE MAIN  
(NO SCALE)

DETAIL "E"  
FORCE MAIN CONNECTION  
TO MANHOLE  
(NO SCALE)



INDIVIDUAL RESIDENCE PUMPS TO BE SUBMERSIBLE GRINDER PUMPS EQUAL TO MPD 10-MATIC 1/2-200 SEWAGE PUMP WITH 2 1/2" IMPELLER 230 VOLT/1/50 CYCLE 1/2 HP. EX. OR SIMPLE PUMP COVER SUSPENDED WITH CHECK VALVE TO BE INSTALLED IN 24" CONCRETE BASIN.  
CONTROL SYSTEM IS TO BE FULLY AUTOMATIC WITH ALL NECESSARY RELAYS, PILOT LIGHTS AND SWITCHES. SUM LEVEL TO BE CONTROLLED BY SEALED MERCURY SWITCH IN FLOAT BALL. SYSTEM IS TO INCLUDE HIGH LEVEL ALARM.

- NOTES TO CONTRACTOR
- CAP OR PLUG SERVICE LINE AT PROPERTY LINE.
  - INSTALL TYPICAL AIR RELEASE LINE (DETAIL "C") AT HIGH POINTS.
  - AVOID HIGH & LOW POINTS IN LINE AS MUCH AS POSSIBLE. MAINTAIN LEVEL GRADIENT EXCEPT AT DISCHARGE POINT.
  - FORCE MAIN IS TO BE 2" PVC SCHEDULE 40.

**ISSUED**  
JUN 18 1979  
C. K. TUDOR ENGINEERS

SKETCH SHOWING PROPOSED FORCE MAIN  
PROPERTY OF LARRY R. TANT  
CITY OF POPOUSON, VIRGINIA

C. K. TUDOR ENGINEERS NEWPORT NEWS, VIRGINIA		SCALE 1" = 100'	DATE JUNE 18, 1979
DESIGN BY CKT	DRAWN BY FTA	CHECKED BY CKT	FILE NO. 22-530
		SHEET 1 OF 1	