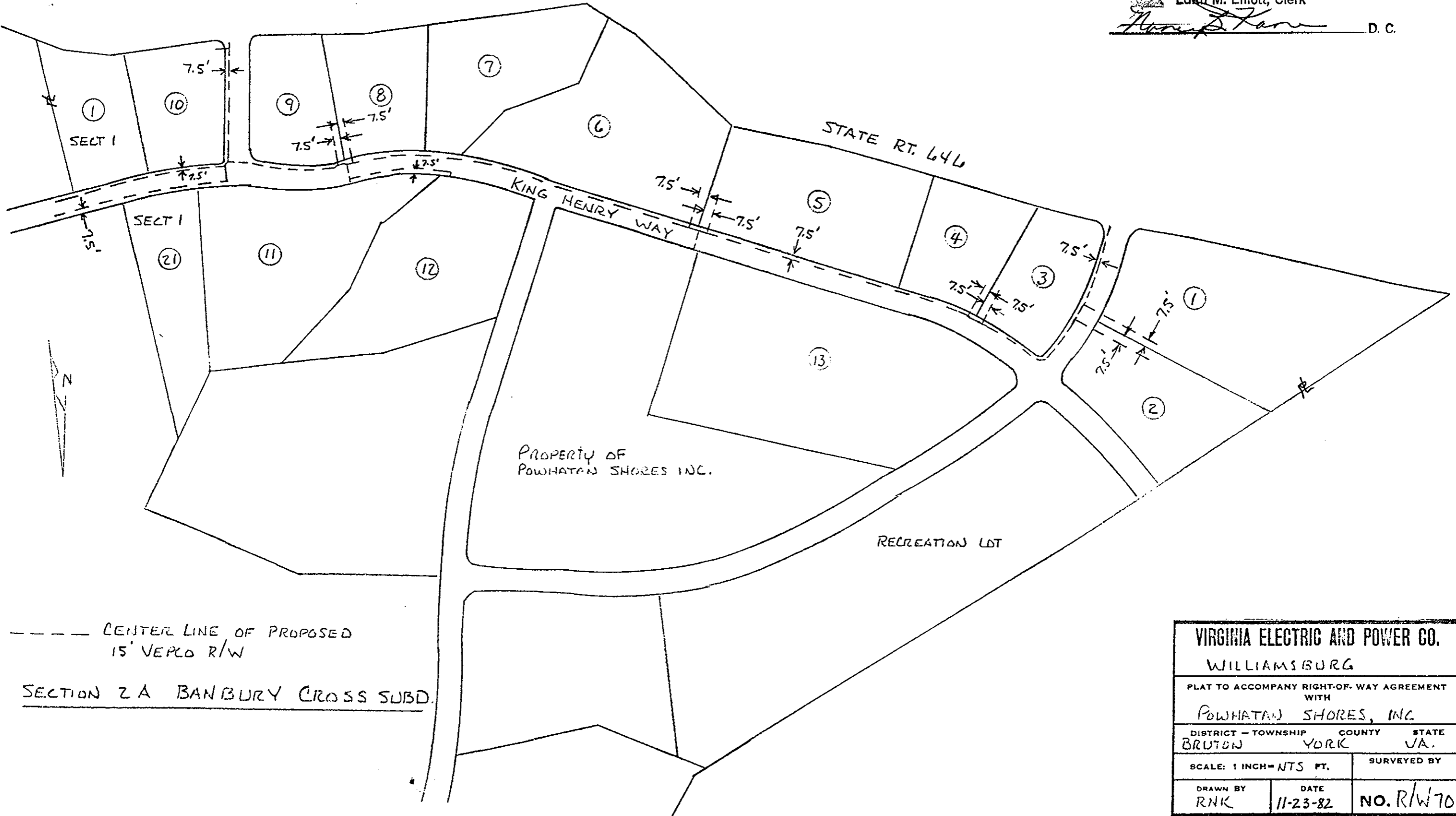


Filed in the Clerk's Office, Circuit Court, York Co., Va.
the 30th day of December 1982

Teste:

Edith M. Elliott, Clerk

[Signature] D. C.



----- CENTER LINE OF PROPOSED
15' VEPLO R/W
SECTION 2A BANBURY CROSS SUBD.

| | | | |
|--|----------|-------------|--|
| VIRGINIA ELECTRIC AND POWER CO. | | | |
| WILLIAMSBURG | | | |
| PLAT TO ACCOMPANY RIGHT-OF-WAY AGREEMENT WITH | | | |
| POWHATAN SHORES, INC. | | | |
| DISTRICT - TOWNSHIP | COUNTY | STATE | |
| BRUTON | YORK | VA. | |
| SCALE: 1 INCH = NTS FT. | | SURVEYED BY | |
| DRAWN BY | DATE | NO. R/W 70 | |
| RNK | 11-23-82 | | |

DRAWER NO. SHEET NO.