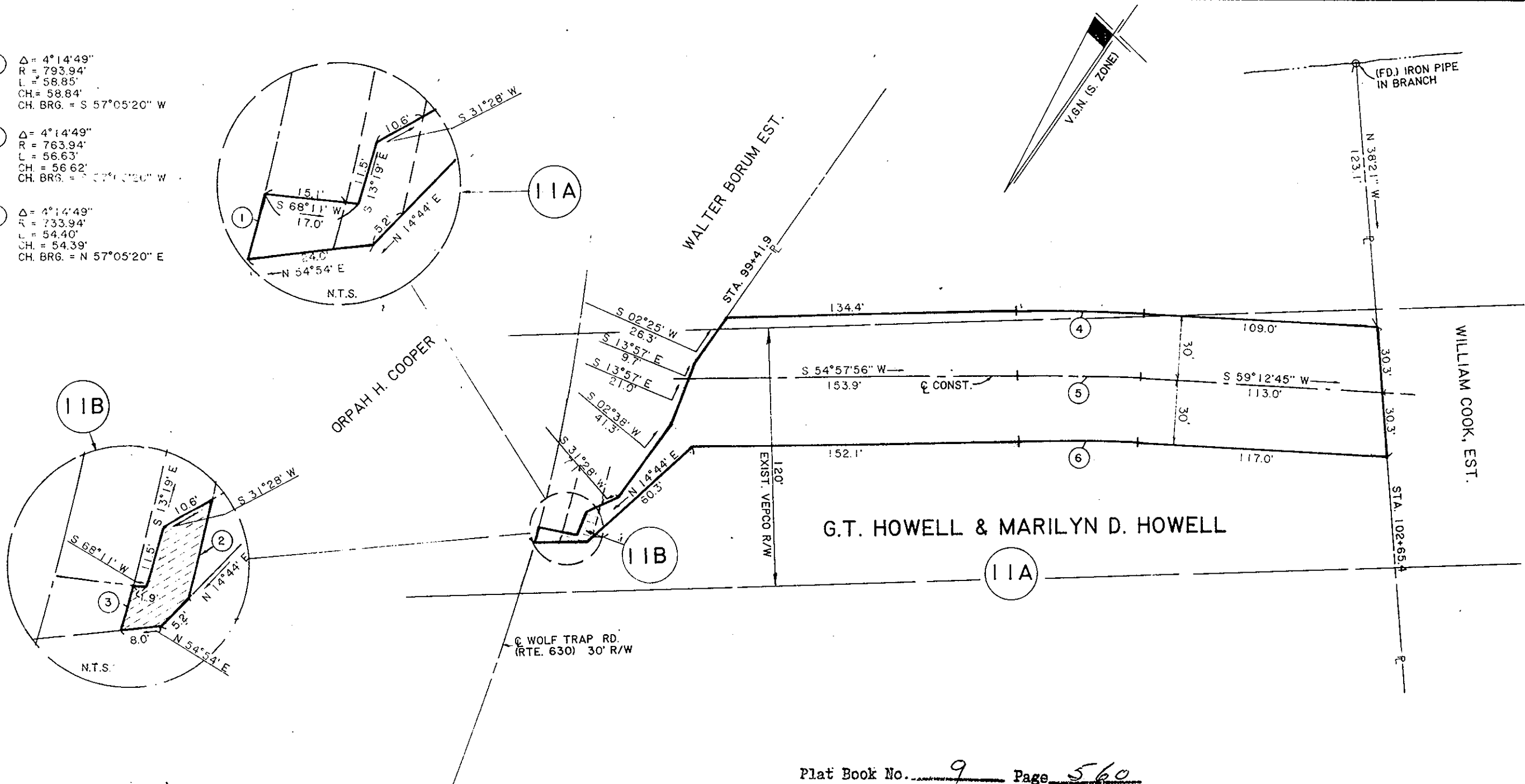


CURVE DATA

- ① Δ = 0°29'51"
R = 755.25'
L = 6.56'
CH. = 6.56'
CH. BRG. = S 14°19'14" E
- ② Δ = 1°04'39"
R = 780.25'
L = 14.67'
CH. = 14.67'
CH. BRG. = N 15°34'31" W
- ③ Δ = 0°12'39"
R = 770.25'
L = 2.8'
CH. = 2.8'
CH. BRG. = S 14°36'19" E
- ④ Δ = 4°14'49"
R = 793.94'
L = 58.85'
CH. = 58.84'
CH. BRG. = S 57°05'20" W
- ⑤ Δ = 4°14'49"
R = 763.94'
L = 56.63'
CH. = 56.62'
CH. BRG. = S 57°05'20" W
- ⑥ Δ = 4°14'49"
R = 733.94'
L = 54.40'
CH. = 54.39'
CH. BRG. = N 57°05'20" E



ACREAGE

- 11A - 0.46 AC. (0.43 AC. INCLUDED IN EXIST. VEPCO 120' R/W)
- 11B - 0.003 AC. (ALL INCLUDED IN HAUL ROAD R/W)

Plat Book No. 9 Page 560

Filed in the Clerk's Office, Circuit Court, York Co., Va.
the 31 day of May 1983

Teste:

Edith M. Elliott, Clerk

[Signature] D. C.

VIRGINIA ELECTRIC AND POWER CO.
YORKTOWN P.S. HAUL ROAD

PLAT TO ACCOMPANY RIGHT-OF-WAY AGREEMENT WITH

G.T. HOWELL & MARILYN D. HOWELL

DISTRICT - TOWNSHIP COUNTY STATE
NELSON YORK VA.

SCALE: 1 INCH = 50' FT.

SURVEYED BY
CARROUTH & ASSOC.

DRAWN BY
L.D.H.

DATE
3/30/83

NO. 11A & B

REVISIONS				
4	3	2	1	ACREAGE REVISION 4-11-83