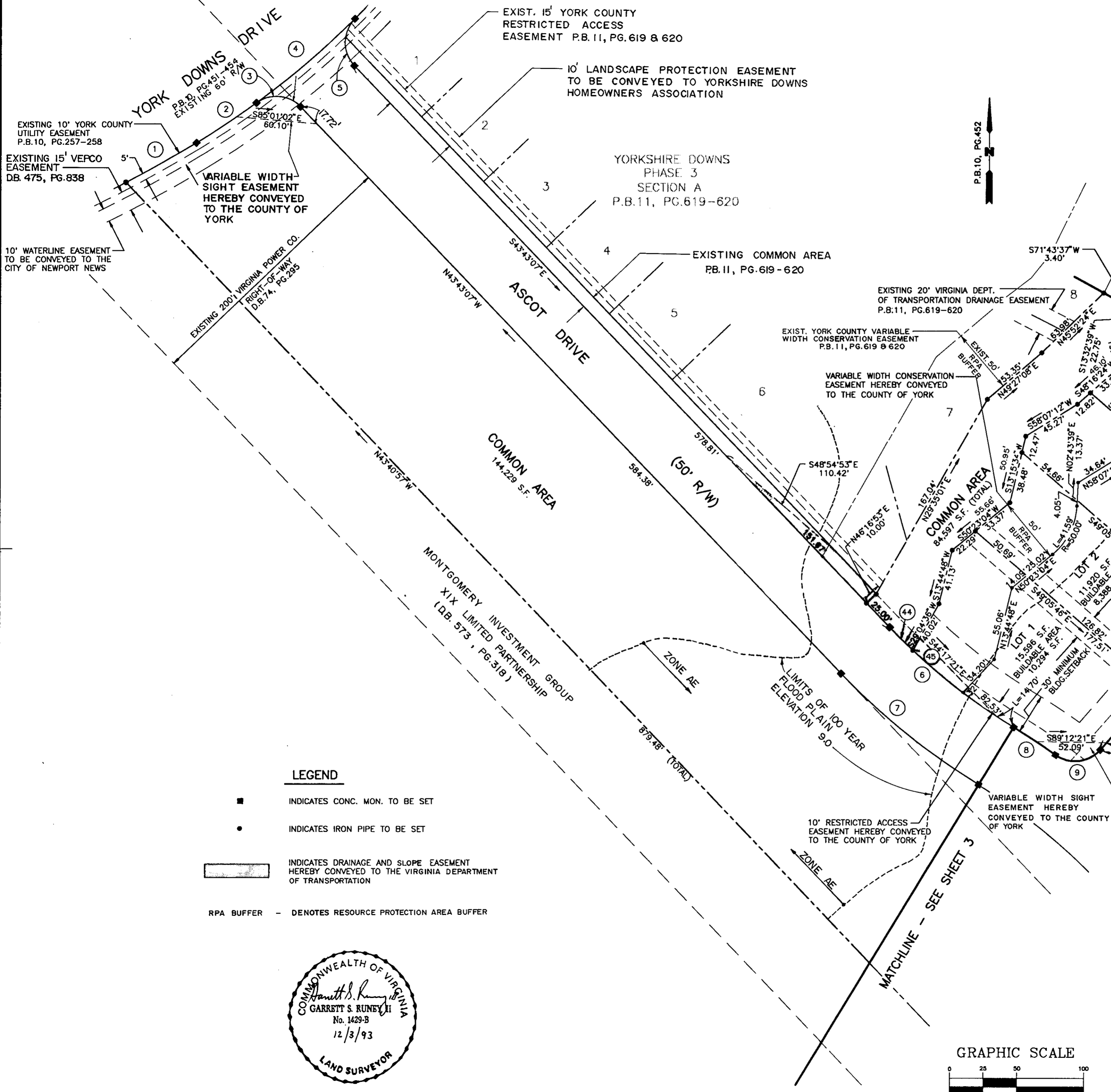


PLAT OF SUBDIVISION
YORKSHIRE DOWNS
PHASE 4
 SECTION A

COUNTY OF YORK, VIRGINIA

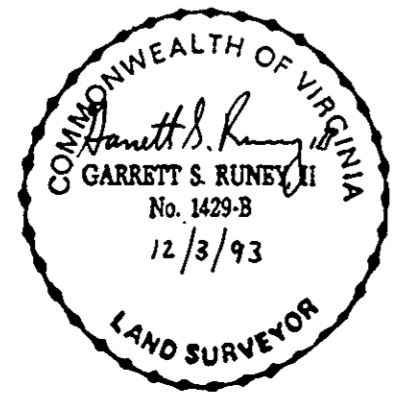
DATE: JULY 31, 1993 SHEET 2 OF 4 SCALE: 1"=50'

SRA SLEDD, RUNEY & ASSOCIATES, P.C.
 ENGINEERS PLANNERS SURVEYORS
 11832 ROCK LANDING DRIVE, SUITE 203
 NEWPORT NEWS, VIRGINIA 23606
 (804) 873-3386



LEGEND

- INDICATES CONC. MON. TO BE SET
- INDICATES IRON PIPE TO BE SET
- ▭ INDICATES DRAINAGE AND SLOPE EASEMENT HEREBY CONVEYED TO THE VIRGINIA DEPARTMENT OF TRANSPORTATION
- - - RPA BUFFER - DENOTES RESOURCE PROTECTION AREA BUFFER



APPROVED:
 YORK COUNTY BOARD OF SUPERVISORS
 BY: *J. Mark Carter*
 PLAT APPROVING AGENT
 DATE: January 25, 1994

STATE OF VIRGINIA
 COUNTY OF YORK
 IN THE CLERK'S OFFICE OF THE CIRCUIT COURT FOR THE COUNTY OF YORK, THE 27th DAY OF January, 1994.
 THIS MAP WAS PRESENTED AND ADMITTED TO RECORD AS THE LAW DIRECTS IN PLAT BOOK 12, PAGE 2.

TESTE: NANCY B. KANE, CLERK
 CLERK

BY: *Catherine Boudin D.C.*

