

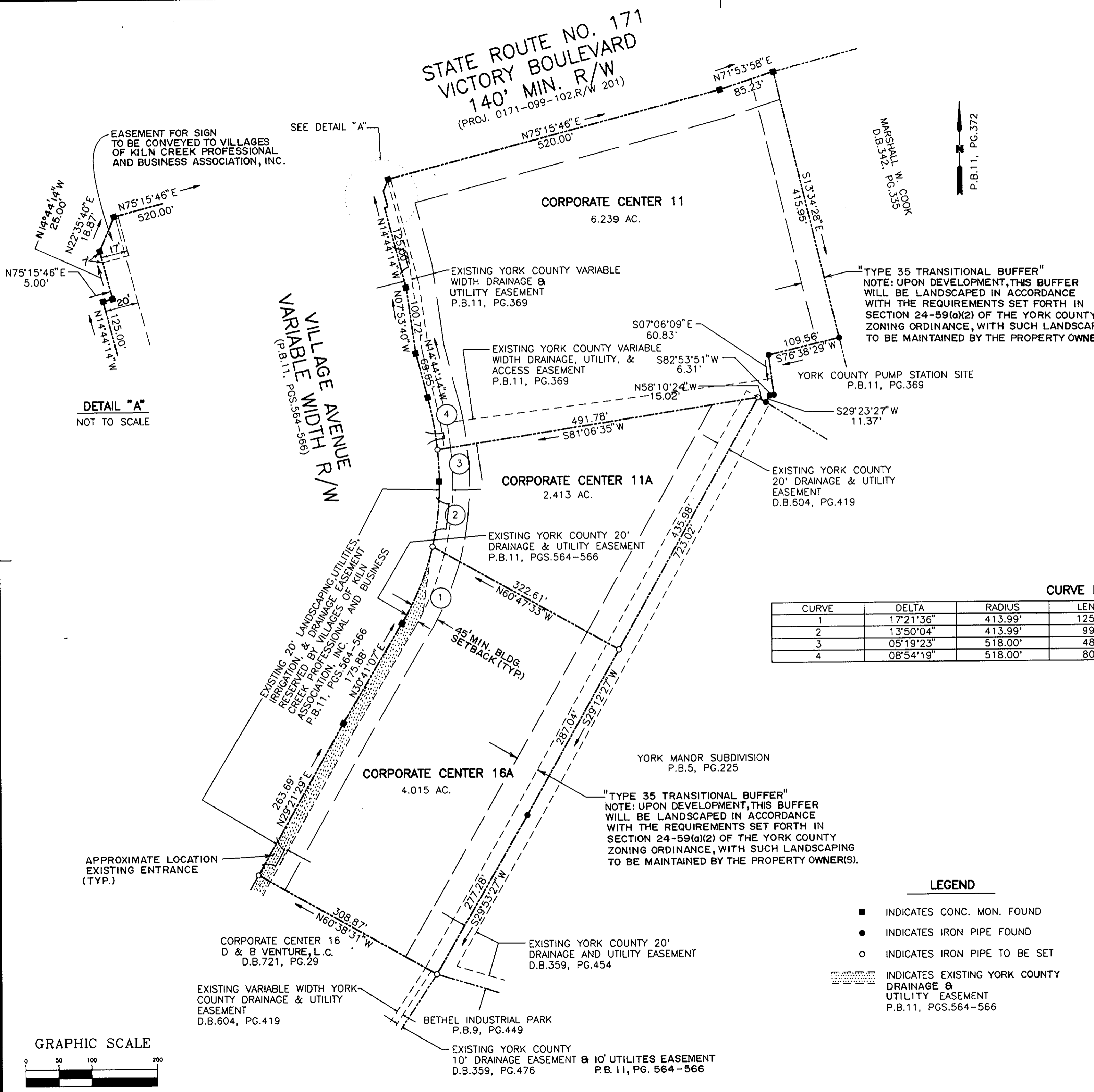
PLAT OF SUBDIVISION
THE VILLAGES OF KILN CREEK

CORPORATE CENTERS 11, 11A, & 16A

COUNTY OF YORK, VIRGINIA

DATE: JAN. 18, 1994	SHEET 2 OF 2	SCALE: 1"=100'
---------------------	--------------	----------------

SLEDD, RUNEY & ASSOCIATES, P.C.
ENGINEERS PLANNERS SURVEYORS
11832 ROCK LANDING DRIVE, SUITE 203
NEWPORT NEWS, VIRGINIA 23606
(804) 873-3386



"TYPE 35 TRANSITIONAL BUFFER"
NOTE: UPON DEVELOPMENT, THIS BUFFER WILL BE LANDSCAPED IN ACCORDANCE WITH THE REQUIREMENTS SET FORTH IN SECTION 24-59(a)(2) OF THE YORK COUNTY ZONING ORDINANCE, WITH SUCH LANDSCAPING TO BE MAINTAINED BY THE PROPERTY OWNER(S).

"TYPE 35 TRANSITIONAL BUFFER"
NOTE: UPON DEVELOPMENT, THIS BUFFER WILL BE LANDSCAPED IN ACCORDANCE WITH THE REQUIREMENTS SET FORTH IN SECTION 24-59(a)(2) OF THE YORK COUNTY ZONING ORDINANCE, WITH SUCH LANDSCAPING TO BE MAINTAINED BY THE PROPERTY OWNER(S).

CURVE DATA

CURVE	DELTA	RADIUS	LENGTH	TANGENT	CHORD	BEARING
1	17°21'36"	413.99'	125.43'	63.20'	124.95'	N22°00'20"E
2	13°50'04"	413.99'	99.96'	50.22'	99.72'	N06°24'30"E
3	05°19'23"	518.00'	48.12'	24.08'	48.11'	S03°10'13"E
4	08°54'19"	518.00'	80.51'	40.34'	80.43'	N10°17'04"W

LEGEND

- INDICATES CONC. MON. FOUND
- INDICATES IRON PIPE FOUND
- INDICATES IRON PIPE TO BE SET
- ▨ INDICATES EXISTING YORK COUNTY DRAINAGE & UTILITY EASEMENT P.B.11, PGS.564-566

APPROVED:
YORK COUNTY BOARD OF SUPERVISORS

BY: *Garrett S. Runey*
PLAT APPROVING AGENT

DATE: MARCH 15, 1994

STATE OF VIRGINIA
COUNTY OF YORK

IN THE CLERK'S OFFICE OF THE CIRCUIT COURT FOR THE COUNTY OF YORK, THE 15 DAY OF March, 19 94.
THIS MAP WAS PRESENTED AND ADMITTED TO RECORD AS THE LAW DIRECTS IN PLAT BOOK 12, PAGE 220.

TESTE: NANCY B. KANE, CLERK
CLERK

BY: *Carol D. Macalino*, Deputy Clerk

DETAIL "A"
NOT TO SCALE

