

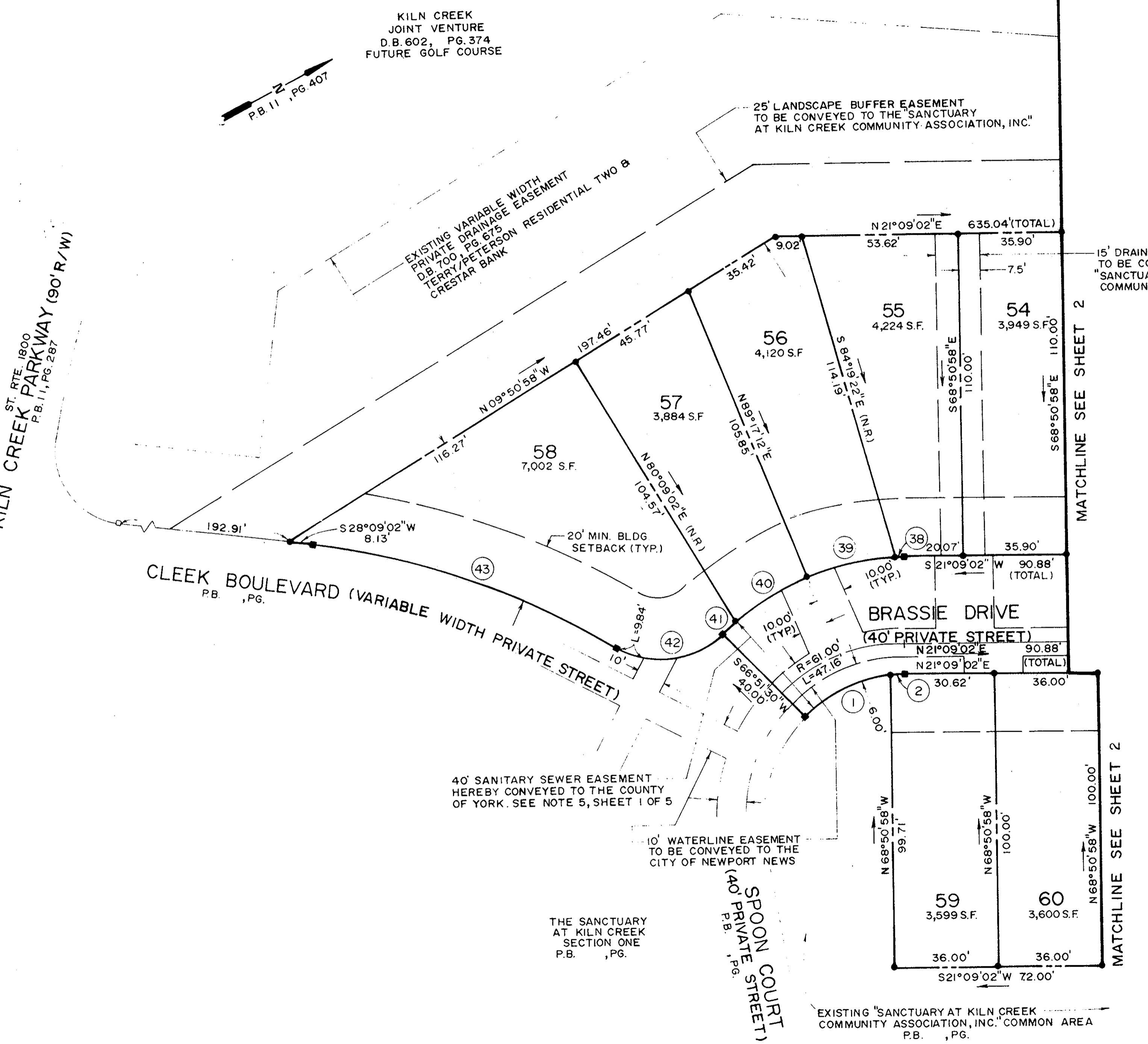
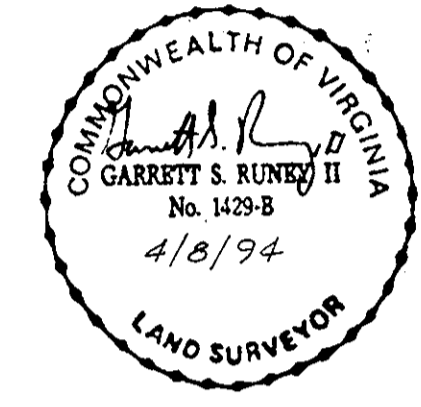
THE SANCTUARY AT KILN CREEK

SECTION TWO
SINGLE FAMILY ATTACHED 1
YORK COUNTY, VIRGINIA

DATE: APRIL 8, 1994 SHEET 1 OF 4 SCALE: 1" = 25'

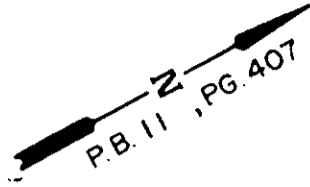
SRA
SLEDD, RUNEY & ASSOCIATES, P.C.
ENGINEERS PLANNERS SURVEYORS
11832 ROCK LANDING DRIVE, SUITE 203
NEWPORT NEWS, VIRGINIA 23606
(804) 873-3388

NOTE: THIS IS NOT A SUBDIVISION PLAT.



KILN CREEK PARKWAY (90' R/W)
ST. RTE. 1800
P.B. 11, PG. 287

KILN CREEK
JOINT VENTURE
D.B. 602, PG. 374
FUTURE GOLF COURSE



CLEEK BOULEVARD (VARIABLE WIDTH PRIVATE STREET)
P.B. , PG. ,

BRASSIE DRIVE
(40' PRIVATE STREET)

SPOON COURT
(40' PRIVATE STREET)
P.B. , PG. ,

40' SANITARY SEWER EASEMENT
HEREBY CONVEYED TO THE COUNTY
OF YORK. SEE NOTE 5, SHEET 1 OF 5

10' WATERLINE EASEMENT
TO BE CONVEYED TO THE
CITY OF NEWPORT NEWS

THE SANCTUARY
AT KILN CREEK
SECTION ONE
P.B. , PG. ,

25' LANDSCAPE BUFFER EASEMENT
TO BE CONVEYED TO THE "SANCTUARY
AT KILN CREEK COMMUNITY ASSOCIATION, INC."

15' DRAINAGE EASEMENT
TO BE CONVEYED TO THE
"SANCTUARY AT KILN CREEK
COMMUNITY ASSOCIATION, INC."

GRAPHIC SCALE



1 inch = 25 ft.

Plat Book No. 12 Page 103

NANCY B. KANE, CLERK

Filed in the Clerk's Office, Circuit Court, York Co., Va.
the 5 day of August 1994

Teste:
Nancy B. Kane, Clerk
Carol D. ... D.C.
Deed Book 808 Page 773

Cost Est. No. 020 FY 94 Print No. N-8762