

PLAT OF SUBDIVISION

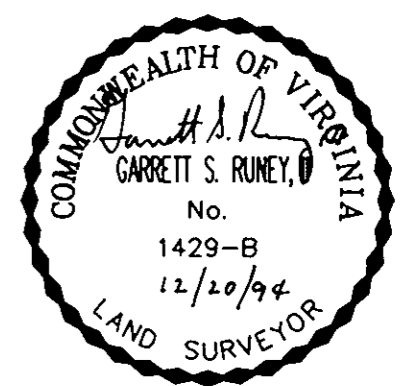
YORKSHIRE DOWNS PHASE 4 SECTION C

COUNTY OF YORK, VIRGINIA

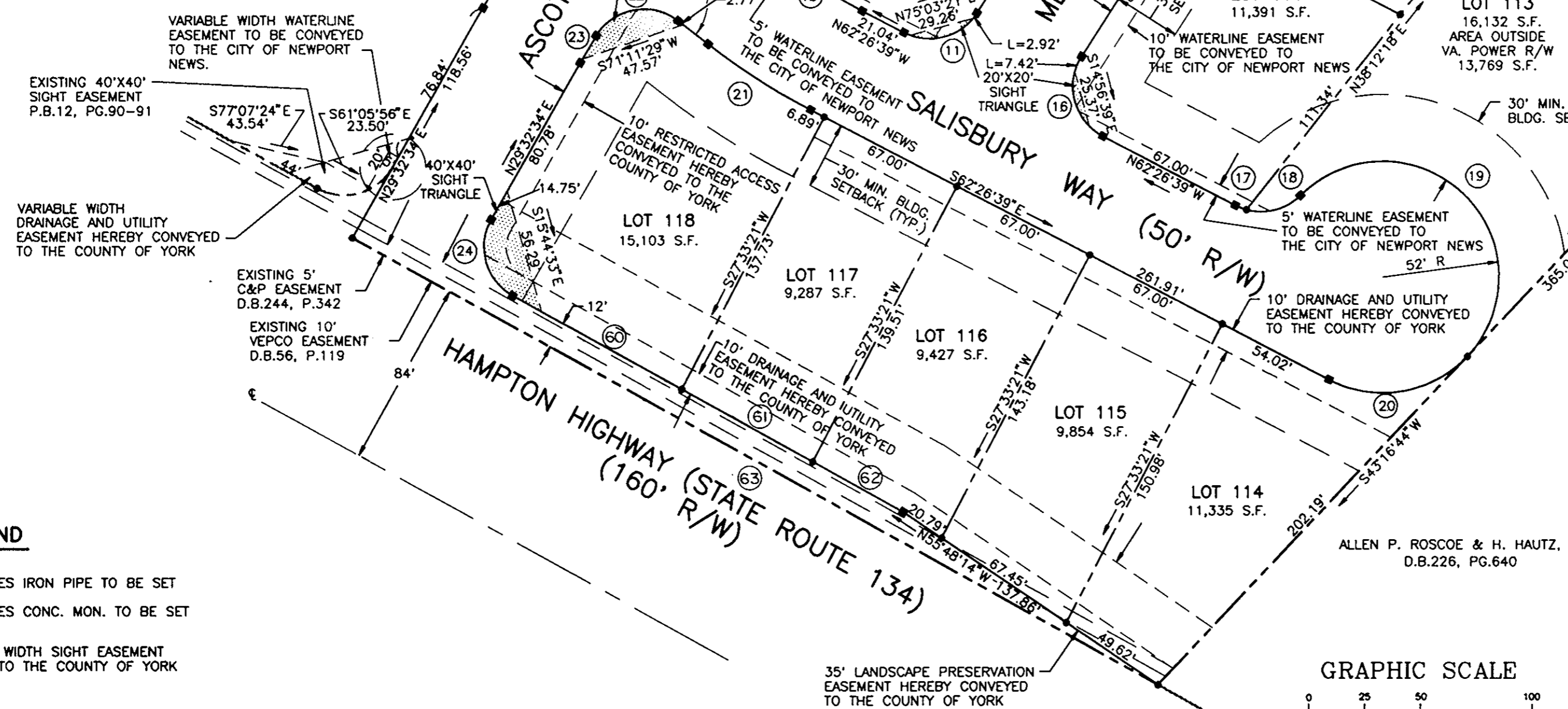
DATE: 11/7/94 SHEET 2 OF 6 SCALE: 1"=50'
PROJECT NO: 92-052A DRAWN BY: PAUL MICHAEL

SRA SLEDD, RONEY & ASSOCIATES, P.C.
ENGINEERS PLANNERS SURVEYORS
11832 ROCK LANDING DRIVE, SUITE 203
NEWPORT NEWS, VIRGINIA 23606
(804) 873-3386

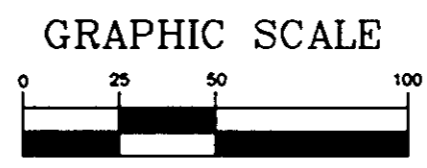
NOTE: THE PROPERTY SHOWN ON THIS SHEET LIES WITHIN FLOOD ZONE X.



CURVE	DELTA	RADIUS	LENGTH	TANGENT	CHORD	BEARING
1	16°24'14"	505.00'	144.58'	72.79'	144.09'	N37°44'41"E
2	40°19'25"	455.00'	320.22'	167.06'	313.65'	N25°47'06"E
3	03°46'34"	505.00'	33.28'	16.65'	33.28'	S03°44'07"W
4	14°41'15"	505.00'	129.45'	65.08'	129.10'	S12°58'01"W
5	12°38'18"	505.00'	111.39'	55.92'	111.17'	N26°37'47"E
6	07°37'40"	505.00'	67.23'	33.67'	67.18'	N36°45'46"E
7	05°22'13"	505.00'	47.33'	23.68'	47.32'	N43°15'42"E
8	01°16'46"	455.00'	10.16'	5.08'	10.16'	S45°18'26"W
9	96°40'39"	25.00'	42.18'	28.10'	37.35'	N03°40'17"W
10	10°26'03"	250.00'	45.53'	22.83'	45.46'	N57°13'38"E
11	85°00'00"	25.00'	37.09'	22.91'	33.78'	S75°03'21"W
12	35°20'35"	25.00'	15.42'	7.96'	15.18'	N14°53'03"E
13	14°09'51"	25.00'	6.18'	3.11'	6.16'	N09°52'10"W
14	27°00'53"	52.00'	253.23'	44.40'	67.53'	S57°26'39"E
15	49°30'26"	25.00'	21.60'	11.53'	20.94'	S57°18'34"W
16	95°00'00"	25.00'	41.45'	27.28'	36.86'	S14°56'39"E
17	12°22'15"	25.00'	5.40'	2.71'	5.39'	S68°37'46"E
18	60°14'59"	25.00'	26.29'	14.51'	25.09'	S75°03'37"W
19	178°20'36"	52.00'	161.86'	103.99'	103.99'	N45°53'34"W
20	74°16'37"	52.00'	67.41'	39.38'	62.79'	S80°25'03"W
21	10°26'03"	300.00'	54.63'	27.39'	54.56'	N57°13'38"E
22	96°40'39"	25.00'	42.18'	28.10'	37.35'	S79°39'04"W
23	01°46'11"	455.00'	14.05'	7.03'	14.05'	S30°25'40"W
24	90°33'58"	25.00'	39.52'	25.25'	35.53'	N15°44'25"W
25	13°18'44"	375.00'	87.13'	43.76'	86.93'	N68°10'27"E
26	13°18'44"	375.00'	87.13'	43.76'	86.93'	N54°51'44"E
27	04°55'38"	375.00'	32.25'	16.13'	32.24'	N45°44'33"E
28	39°10'11"	52.00'	35.55'	18.50'	34.86'	N62°51'49"E
29	48°12'52"	52.00'	43.76'	23.27'	42.48'	S73°26'39"E
30	92°36'57"	52.00'	84.06'	54.43'	75.20'	S03°01'45"E
31	72°37'13"	52.00'	65.91'	38.21'	61.58'	S79°35'21"W
32	72°37'13"	25.00'	31.69'	18.37'	29.61'	S79°35'21"W
33	01°34'17"	425.00'	11.66'	5.83'	11.66'	S44°03'53"W
34	08°15'16"	425.00'	61.23'	30.67'	61.18'	S48°58'39"W
35	08°28'58"	425.00'	62.92'	31.52'	62.86'	S57°20'46"W
36	08°28'58"	425.00'	62.92'	31.52'	62.86'	S65°49'44"W
37	06°16'18"	425.00'	46.52'	23.28'	46.50'	S73°12'22"W
38	09°22'39"	300.00'	49.10'	24.61'	49.05'	N40°15'18"E
39	90°00'00"	25.00'	39.27'	25.00'	35.36'	N00°03'23"W
40	72°37'14"	25.00'	31.69'	18.37'	29.61'	N81°21'59"W
41	59°34'02"	52.00'	54.06'	29.76'	51.66'	N87°53'35"W
42	49°17'48"	52.00'	44.74'	23.86'	43.37'	N33°27'41"W
43	31°23'17"	52.00'	28.49'	14.61'	28.13'	N06°52'52"E
44	31°23'17"	52.00'	28.49'	14.61'	28.13'	N38°16'09"E
45	31°23'17"	52.00'	28.49'	14.61'	28.13'	N69°39'26"E
46	31°23'17"	52.00'	28.49'	14.61'	28.13'	S78°57'17"E
47	18°12'16"	52.00'	16.52'	8.33'	16.45'	S54°09'31"E
48	30°31'10"	52.00'	27.70'	14.19'	27.37'	S29°47'48"E
49	34°32'12"	52.00'	31.34'	16.16'	30.87'	S02°43'53"W
50	34°32'12"	52.00'	31.34'	16.16'	30.87'	S37°16'05"W
51	47°01'28"	52.00'	42.68'	22.62'	41.49'	S78°02'54"W
52	78°15'22"	52.00'	71.02'	42.30'	65.63'	N39°18'41"W
53	27°44'50"	52.00'	25.18'	12.84'	24.94'	N13°41'25"E
54	72°37'13"	25.00'	31.69'	18.37'	29.61'	N08°44'46"W
55	90°00'00"	25.00'	39.27'	25.00'	35.36'	S89°56'37"W
56	09°22'39"	250.00'	40.92'	20.50'	40.87'	S40°15'18"W
57	06°01'54"	250.00'	26.32'	13.17'	26.31'	S32°33'01"W
58	01°30'42"	375.00'	9.89'	4.95'	9.89'	N75°35'10"E
59	18°27'48"	505.00'	162.74'	82.08'	162.03'	N11°04'44"E
60	00°04'20"	68,654.94	86.61'	43.31'	86.61'	N60°59'14"W
61	00°03'21"	68,654.94	67.02'	33.51'	67.02'	N60°55'23"W
62	00°02'19"	68,654.94	46.37'	23.18'	46.37'	N60°52'33"W
63	00°20'40"	68,654.94	412.66'	206.33'	412.66'	N60°54'49"W



- LEGEND**
- INDICATES IRON PIPE TO BE SET
 - INDICATES CONC. MON. TO BE SET
 - ▨ INDICATES VARIABLE WIDTH SIGHT EASEMENT HEREBY CONVEYED TO THE COUNTY OF YORK



APPROVED:
YORK COUNTY BOARD OF SUPERVISORS
BY: *J. Mark Carter*
PLAT APPROVING AGENT
DATE: *December 28, 1994*

STATE OF VIRGINIA
COUNTY OF YORK
IN THE CLERK'S OFFICE OF THE CIRCUIT COURT FOR THE COUNTY OF YORK, THE 28 DAY OF Dec, 1994
THIS MAP WAS PRESENTED AND ADMITTED TO RECORD AS THE LAW DIRECTS IN PLAT BOOK 12, PAGE 182

TESTE: *Nancy R. Kane*
CLERK
BY: *Catharine Bender, DC*

ALLEN P. ROSCOE & H. HAUZ, JR.
D.B.226, PG.640

MAGRUDER PROPERTIES, L.L.C.
A VIRGINIA LIMITED LIABILITY COMPANY
D.B.717, PG.670
P.B.12, PG.90-91