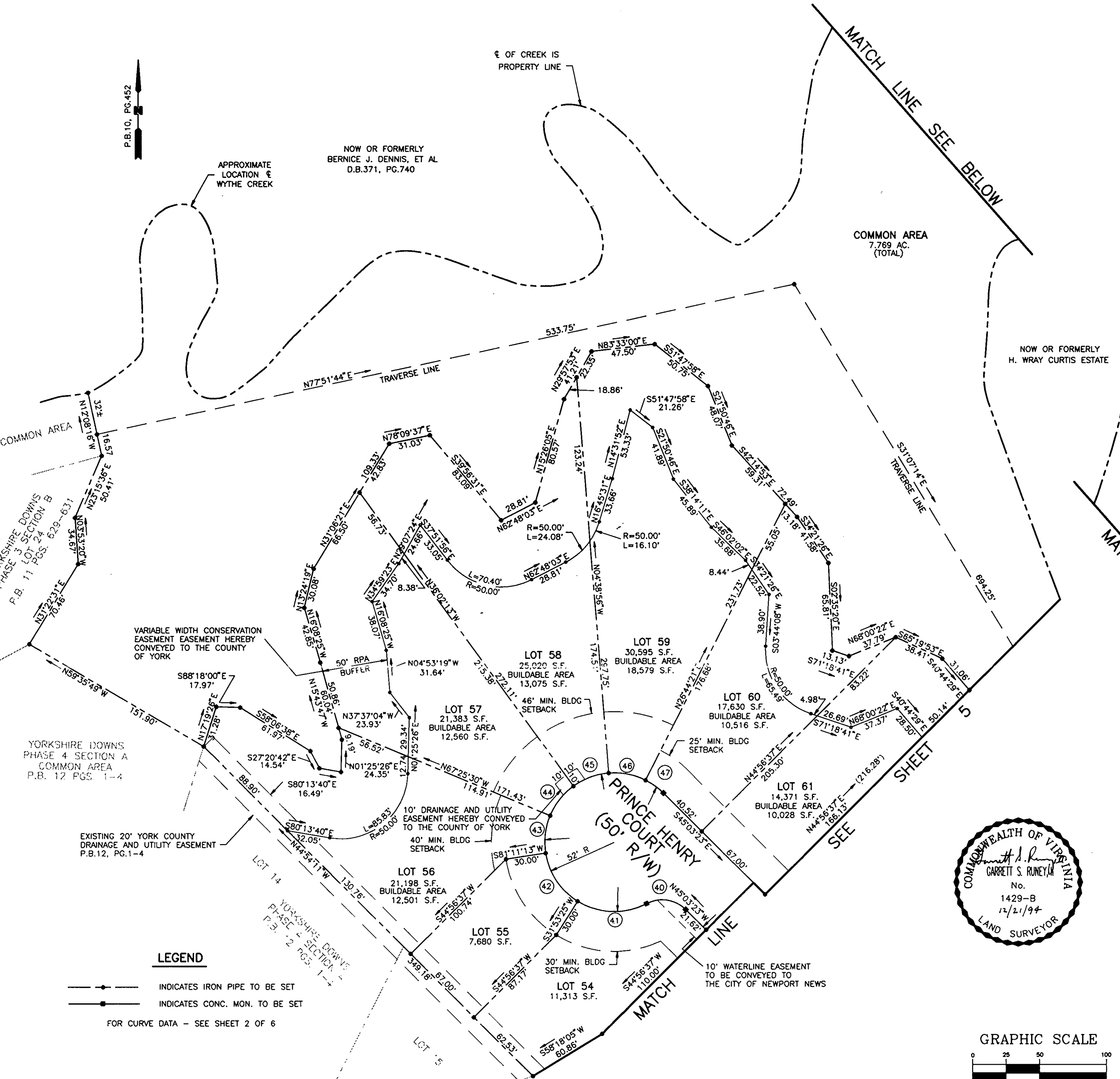


PLAT OF SUBDIVISION
YORKSHIRE DOWNS
PHASE 4
 SECTION C
 COUNTY OF YORK, VIRGINIA

DATE: 11/7/94 SHEET 6 OF 6 SCALE: 1"=50'
 PROJECT NO: 92-052A DRAWN BY: PAUL MICHAEL

SRA SLEDD, RUNEY & ASSOCIATES, P.C.
 ENGINEERS PLANNERS SURVEYORS
 11832 ROCK LANDING DRIVE, SUITE 203
 NEWPORT NEWS, VIRGINIA 23606
 (804) 873-3386

NOTE: THE PROPERTY SHOWN ON THIS SHEET LIES WITHIN FLOOD ZONE AE (ELEV-9.0).



APPROXIMATE LOCATION OF WYTHE CREEK

NOW OR FORMERLY BERNICE J. DENNIS, ET AL D.B. 371, PG. 740

COMMON AREA 7.769 AC. (TOTAL)

NOW OR FORMERLY H. WRAY CURTIS ESTATE

COMMON AREA

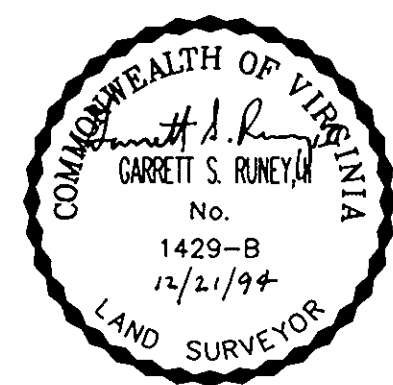
COMMON AREA

YORKSHIRE DOWNS PHASE 3 LOT SECTION B P.B. 11 PGS. 629-631

YORKSHIRE DOWNS PHASE 4 SECTION A COMMON AREA P.B. 12 PGS. 1-4

EXISTING 20' YORK COUNTY DRAINAGE AND UTILITY EASEMENT P.B. 12, PG. 1-4

LEGEND
 —●— INDICATES IRON PIPE TO BE SET
 —●— INDICATES CONC. MON. TO BE SET
 FOR CURVE DATA - SEE SHEET 2 OF 6



APPROVED:
 YORK COUNTY BOARD OF SUPERVISORS

BY: *James Carter*
 PLAT APPROVING AGENT
 DATE: *DECEMBER 28, 1994*

STATE OF VIRGINIA
 COUNTY OF YORK

IN THE CLERK'S OFFICE OF THE CIRCUIT COURT FOR THE COUNTY OF YORK, THE *28* DAY OF *Dec*, 19*94*
 THIS MAP WAS PRESENTED AND ADMITTED TO RECORD AS THE LAW DIRECTS IN PLAT BOOK *12*, PAGE *186*.

TESTE: *Maney A. Kane*
 CLERK

BY: *Catherine Sandy, DCI*

