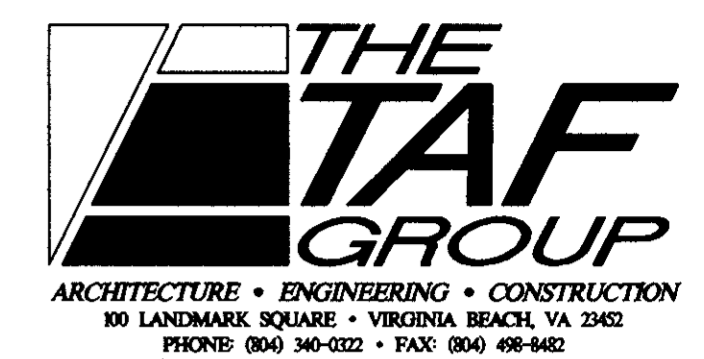
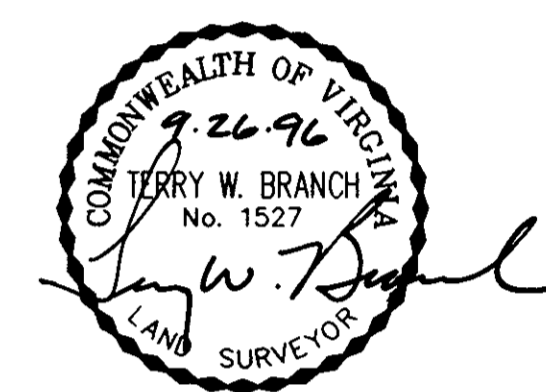
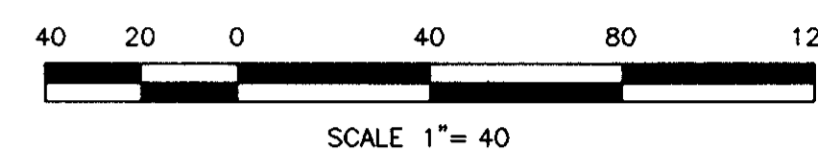


WILLIAMSBURG COMMONS
PHASE 1

BRUTON DISTRICT - COUNTY OF YORK



MAY 31, 1996
SHEET 3 OF 5



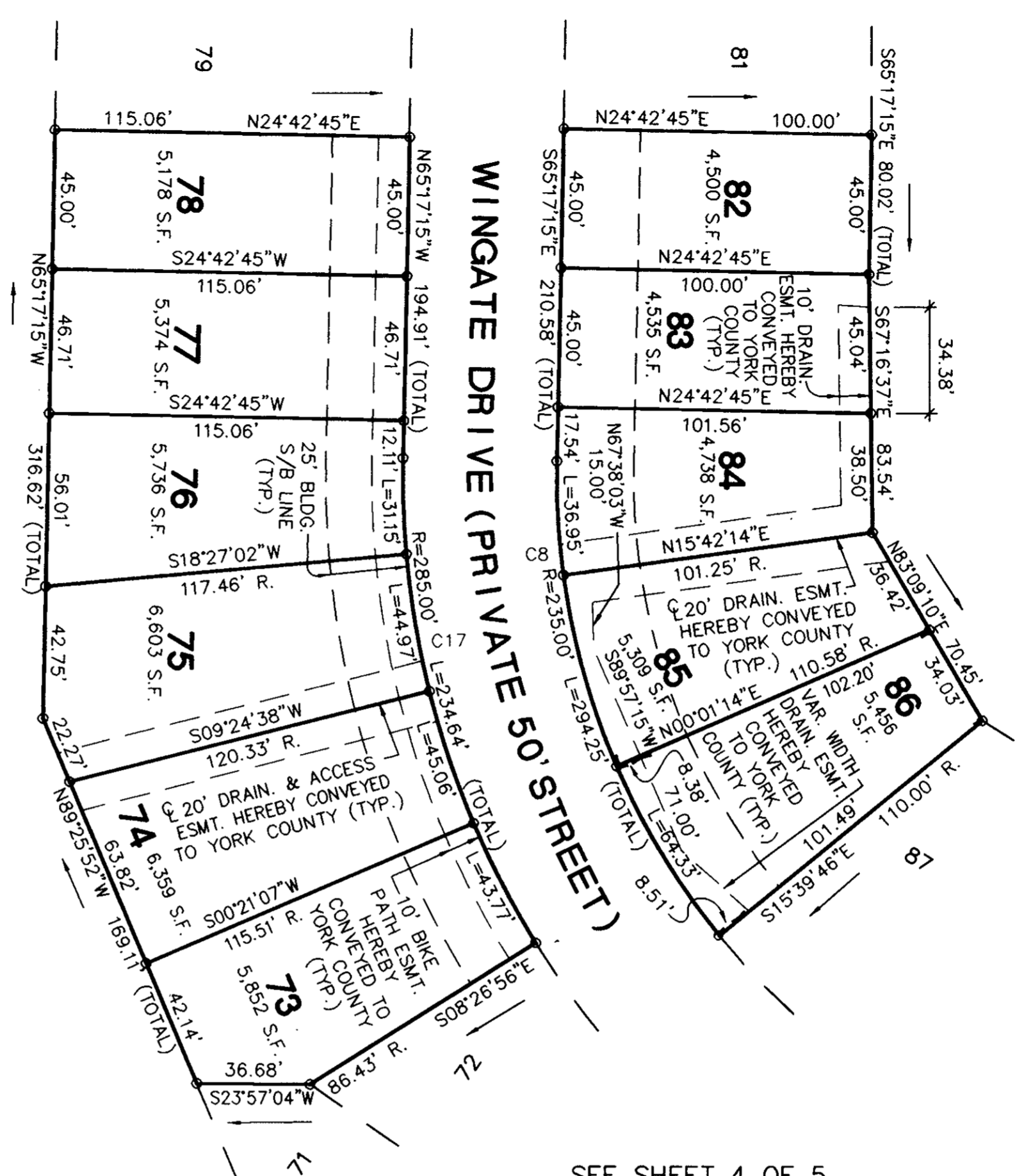
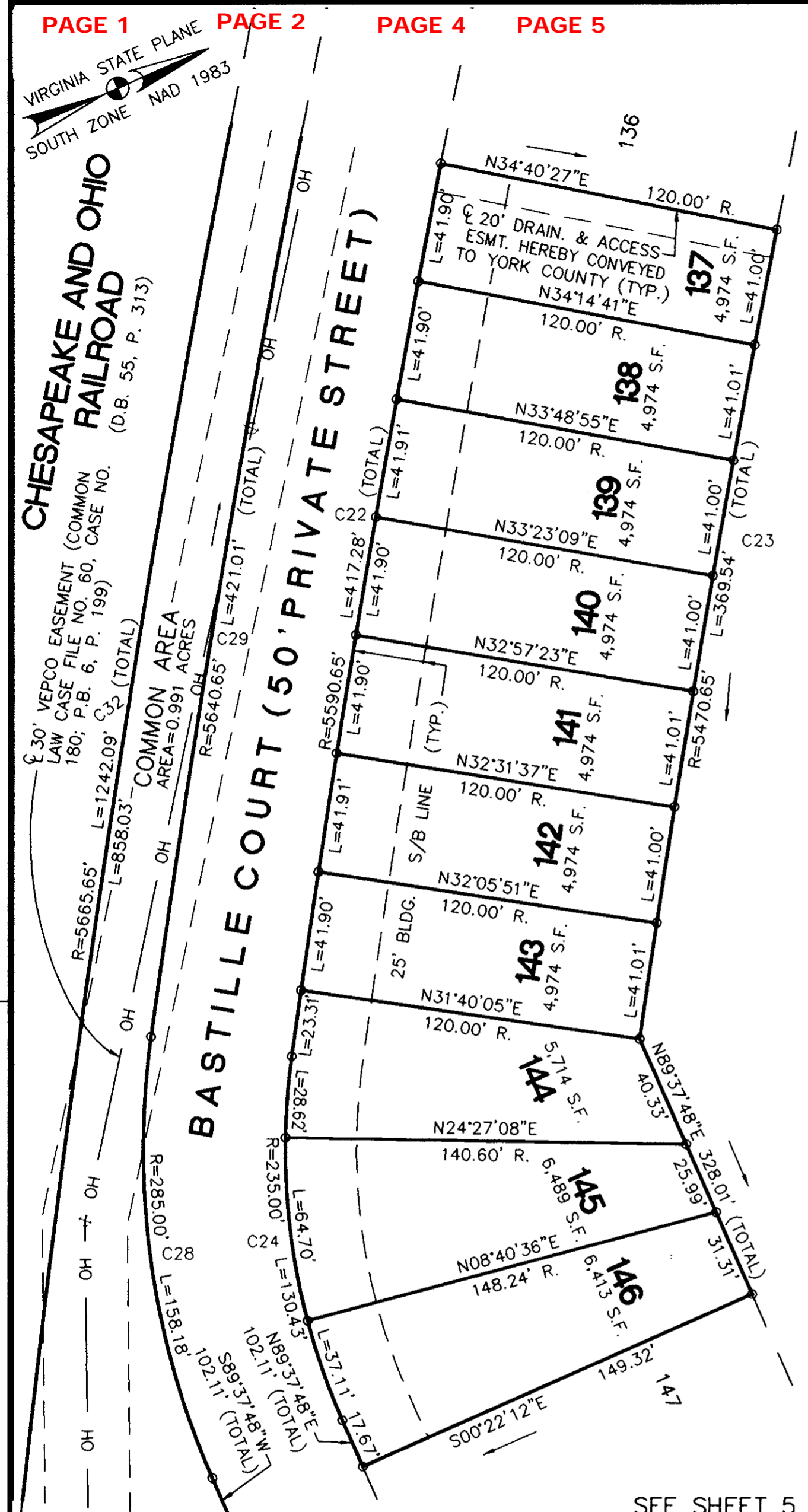
NOW OR FORMERLY
WCT, L.L.C.
(D.B. 894, P. 356)
(D.B. 894, P. 360)

SEE SHEET 2 OF 5

COMMON AREA
AREA=3.458 ACRES

SEE SHEET 4 OF 5

SEE SHEET 5 OF 5



DRAWN BY:	JAH	DATE:	5/31/96
DRAFT CHK:	TWB	DATE:	9/25/96
COMP. CHK:	CAH	DATE:	5/31/96
ENG. CHK:	KGS	DATE:	5/31/96
DEPT. HEAD:	JOM	DATE:	
PROJECT NO.:	951200		
SCALE:	1" = 40'		
FILE NO.:	A-7-903		

CURVE	RADIUS	LENGTH	TANGENT	CHORD	BEARING	DELTA
C8	235.00'	294.25'	169.93'	275.40'	N78°50'29"E	71°44'31"
C17	285.00'	234.64'	124.43'	228.07'	N88°52'24"W	47°10'18"
C22	5590.65'	417.28'	208.73'	417.18'	S56°25'57"E	04°16'35"
C23	5470.65'	369.54'	184.84'	369.47'	N56°23'48"W	03°52'13"
C24	235.00'	130.43'	66.94'	128.76'	S74°28'14"E	31°47'58"
C28	285.00'	158.18'	81.18'	156.15'	N74°28'14"W	31°47'58"
C29	5640.65'	421.01'	210.60'	420.91'	N56°25'57"W	04°16'35"
C32	5665.65'	1242.09'	623.54'	1239.60'	N56°41'27"W	12°33'40"

- LEGEND
- DENOTES EASEMENT/SETBACK
 - OH --- DENOTES OVERHEAD WIRES
 - DENOTES MONUMENT FOUND
 - DENOTES MONUMENT SET
 - DENOTES IRON PIN/PIPE FOUND
 - DENOTES IRON PIN SET

APPROVED:
YORK COUNTY BOARD
OF SUPERVISORS

BY: *[Signature]*
PLAT APPROVING AGENT

DATE: 10/31/96

STATE OF VIRGINIA
COUNTY OF YORK

IN THE CLERK'S OFFICE OF THE CIRCUIT COURT FOR THE COUNTY OF YORK, VIRGINIA THIS MAP WAS PRESENTED AND ADMITTED TO RECORD AS THE LAW DIRECTS THIS 30 DAY OF Nov 19 96 IN PLAT BOOK 12 PAGE 420. 11:15

TESTE: Nancy B. Kane, Clerk, CLERK.

BY: *[Signature]*