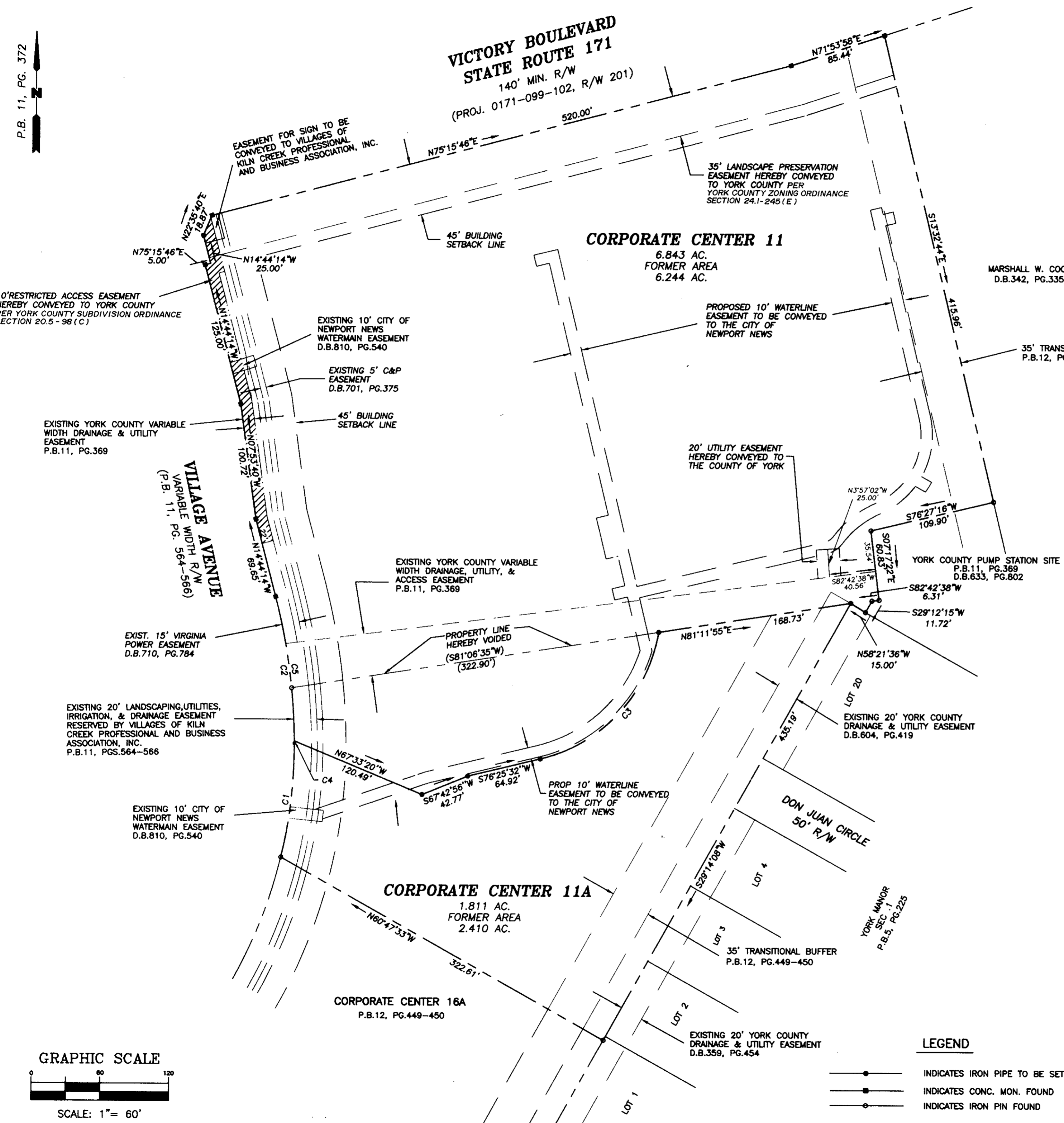
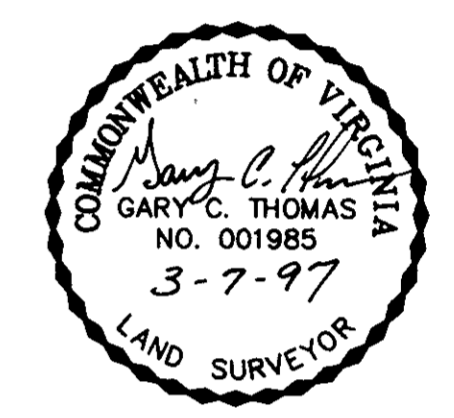


P.B. 11, PG. 372

RESUBDIVISION OF
 THE VILLAGES OF KILN CREEK
**CORPORATE CENTERS
 11 & 11A**
 COUNTY OF YORK, VIRGINIA

DATE: 1/22/97 SHEET 2 OF 2 SCALE: 1"=60'
 PROJECT NO: 96-010 DRAWN BY: PAUL MICHAEL

SA SLEDD & ASSOCIATES, P.C.
 ENGINEERS PLANNERS SURVEYORS
 11832 ROCK LANDING DRIVE, SUITE 203
 NEWPORT NEWS, VIRGINIA 23606
 (757) 873-3388



CURVE DATA

NUMBER	RADIUS	DELTA	ARC LENGTH	TANGENT	CHORD	CHORD BEARING
C1	413.99	13°50'02"	99.96	50.22	99.71	N 06°24'31" E
C2	518.00	14°13'43"	128.64	64.65	128.31	N 07°37'22" W
C3	136.00	67°00'54"	159.07	90.04	150.16	N 42°55'05" E
C4	518.00	00°13'16"	2.00	1.00	2.00	N 00°37'09" W
C5	518.00	14°00'27"	126.64	63.64	126.32	N 07°44'00" W

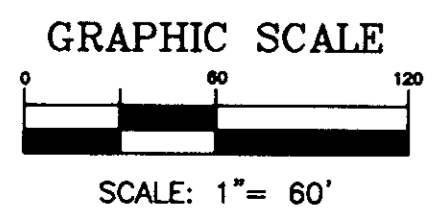
REFERENCES: P.B. 12, PG. 19-20
 P.B. 12, PG. 449-450

APPROVED:
YORK COUNTY BOARD OF SUPERVISORS
 BY: [Signature] PE
 PLAT APPROVING AGENT
 DATE: 4-29-97

STATE OF VIRGINIA
COUNTY OF YORK

IN THE CLERK'S OFFICE OF THE CIRCUIT COURT, FOR THE COUNTY OF YORK, THE 25th DAY OF April, 1997. THIS MAP WAS PRESENTED AND ADMITTED TO RECORD AS THE LAW DIRECTS IN PLAT BOOK 12, PAGE 466.

TESTE: Nancy B. Kane, Clerk
 CLERK
 BY: [Signature]



LEGEND

- INDICATES IRON PIPE TO BE SET
- INDICATES CONC. MON. FOUND
- INDICATES IRON PIN FOUND