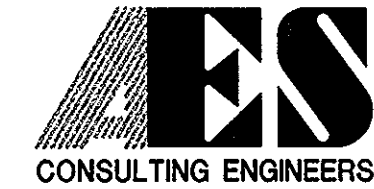


SUBDIVISION OF THE PROPERTY OF RICHMOND ROAD ASSOCIATES, L.L.C., PARCEL CONTAINING 63.510 ACRES

BRUTON DISTRICT YORK COUNTY VIRGINIA DATE: 6/22/98 SCALE: 1"=200' DRAWN: PWM



5248 Olde Towne Road, Suite 1 Williamsburg, Virginia 23188 (757) 253-0040 Fax (757) 220-8994

JOB NO. 8452

SHEET 2 OF 2 REVISED 7/21/98 PER YORK COUNTY COMMENTS



NOTE: SEE SHEET 1 FOR CURVE DATA.

APPROVED: YORK COUNTY BOARD OF SUPERVISORS

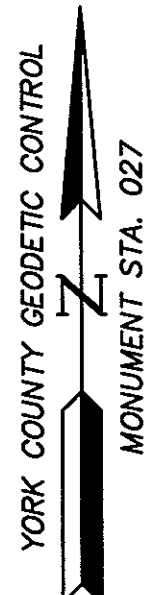
BY: [Signature], PLAT APPROVING AGENT DATE: 7-22-98

STATE OF VIRGINIA COUNTY OF YORK

IN THE CLERK'S OFFICE OF THE CIRCUIT COURT FOR THE COUNTY OF YORK THE 22ND DAY OF July, 1998 THIS MAP WAS PRESENTED AND ADMITTED TO RECORD AS THE LAW DIRECTS, PLAT BOOK 12, PAGE 607.

TESTE: NANCY B. KANE, CLERK

BY: Kristen N. Nelson, D.C.



CITY OF WILLIAMSBURG "WALLER MILL RESERVOIR" ASSESSOR'S PARCEL 6-4 D.B. 60, PG. 408 P.B. 6, PG. 87

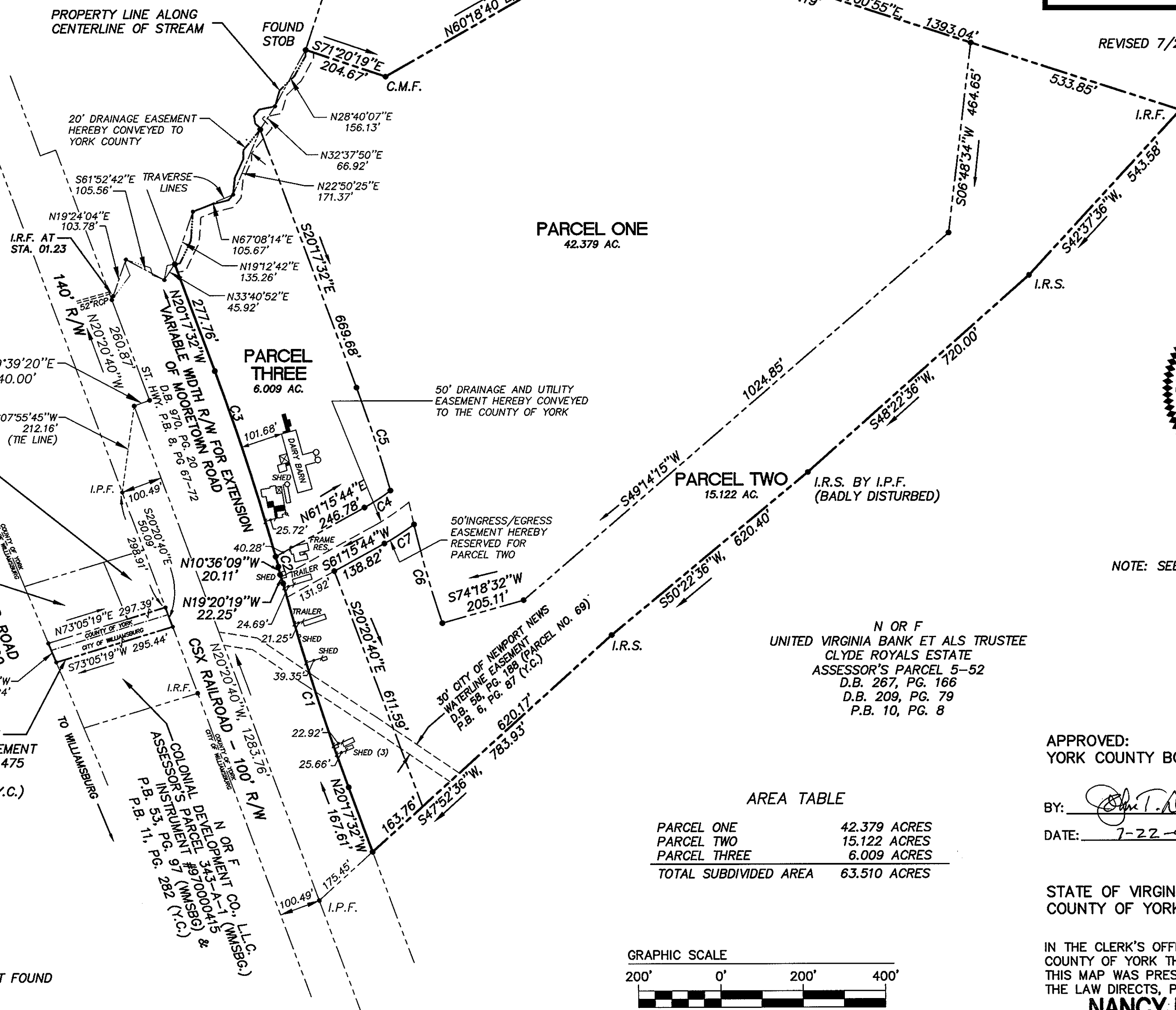
N OR F SHNI CORPORATION ASSESSOR'S PARCEL 5-(13)-D D.B. 317, PG. 227 P.B. 10, PG. 342

N OR F COLONIAL DEVELOPMENT CO., L.L.C. ASSESSOR'S PARCEL 5-51D (YORK CO..) D.B. 943, PG. 196 P.B. 53, PG. 97 (WMSBG) & P.B. 11, PG. 282 (Y.C.)

N OR F BEULAH VAN AUSDALL ASSESSOR'S PARCEL 5-51B "LEASE PARCEL" D.B. 243, PG. 776 P.B. 11, PG. 282 (Y.C.)

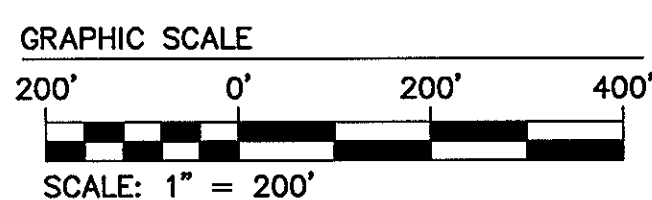
50' RIGHT-OF-WAY EASEMENT & AGREEMENT PER D.B. 605, PG. 475 P.B. 53, PG. 97 & P.B. 11, PG. 282 (Y.C.)

ASSASSOR'S PARCEL INSTRUMENT #97000000 & #97000000 (WMSBG) & P.B. 53, PG. 97 (Y.C.)



AREA TABLE

Table with 2 columns: Parcel Name and Area in Acres. Rows include Parcel One (42.379 ACRES), Parcel Two (15.122 ACRES), Parcel Three (6.009 ACRES), and Total Subdivided Area (63.510 ACRES).



NOTE: I.R.F. = IRON ROD FOUND I.R.S. = IRON ROD SET C.M.F. = CONCRETE MONUMENT FOUND I.P.F. = IRON PIPE FOUND