

WYTHE CREEK FARMS

(D.B.910, P.391; P.B.10, P.427)

SECTION THREE

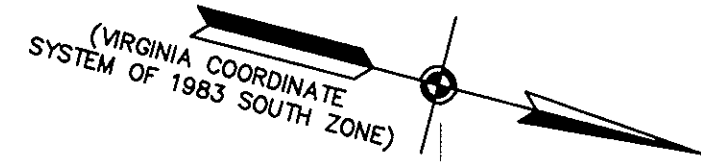
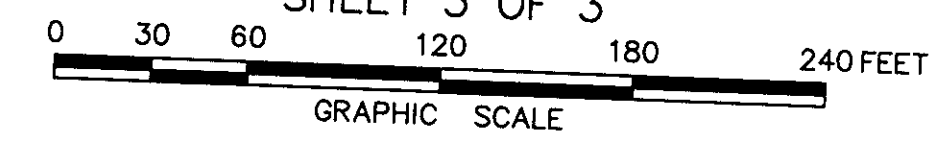
BETHEL DISTRICT - COUNTY OF YORK, VIRGINIA

THE SIRINE GROUP, LTD.

SURVEYORS • ENGINEERS • PLANNERS
P.O. BOX 450, ROUTE 17
WHITE MARSH, VIRGINIA 23183

SCALE: 1" = 60' MAY 29, 1998

SHEET 3 OF 3

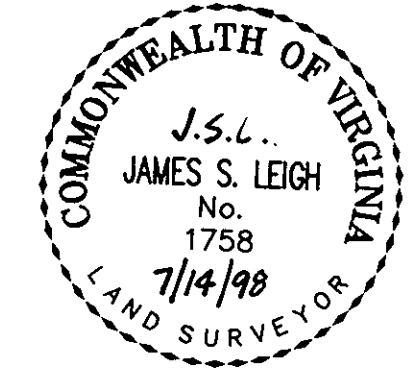


EXISTING PRIVATE WYTHE CREEK FARMS HOMEOWNER'S ASSOCIATION DRAINAGE & UTILITY EASEMENT (P.B.12, P.275-282)

COMMON AREA LAKE NO. 2

20' PRIVATE DRAINAGE & UTILITY EASEMENT HEREBY CONVEYED TO THE WYTHE CREEK FARMS HOMEOWNER'S ASSOCIATION

NOW OR FORMERLY
WYTHE CREEK FARMS, L.L.C.
A VIRGINIA LIMITED LIABILITY COMPANY
(D.B.775, P.375)
(FUTURE DEVELOPMENT)



NOW OR FORMERLY
WYTHE CREEK FARMS SECTION ONE
(P.B.12, P.275-282)

COMMON AREA LAKE NO. 1
(6.243 ACRES TOTAL)

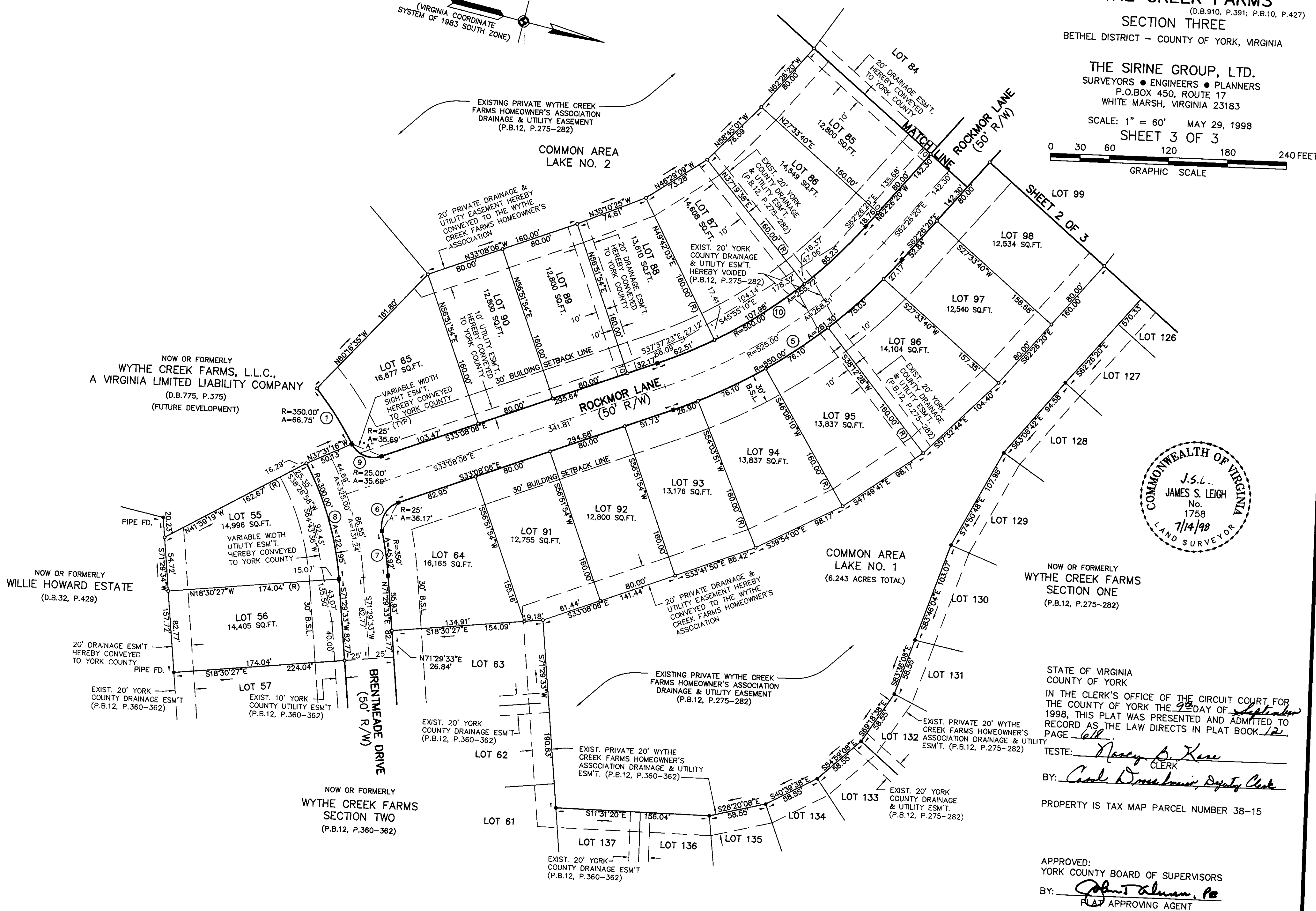
STATE OF VIRGINIA
COUNTY OF YORK
IN THE CLERK'S OFFICE OF THE CIRCUIT COURT FOR THE COUNTY OF YORK THE 9th DAY OF September 1998, THIS PLAT WAS PRESENTED AND ADMITTED TO RECORD AS THE LAW DIRECTS IN PLAT BOOK 12, PAGE 618.

TESTE: Nancy S. Kane CLERK
BY: Carol D. ... Deputy Clerk

PROPERTY IS TAX MAP PARCEL NUMBER 38-15

APPROVED:
YORK COUNTY BOARD OF SUPERVISORS
BY: John ... PLAT APPROVING AGENT
DATE: 9-1-98

Book 1039 Page 179



NOW OR FORMERLY
WILLIE HOWARD ESTATE
(D.B.32, P.429)

NOW OR FORMERLY
WYTHE CREEK FARMS SECTION TWO
(P.B.12, P.360-362)

EXISTING PRIVATE WYTHE CREEK FARMS HOMEOWNER'S ASSOCIATION DRAINAGE & UTILITY EASEMENT (P.B.12, P.275-282)

EXIST. PRIVATE 20' WYTHE CREEK FARMS HOMEOWNER'S ASSOCIATION DRAINAGE & UTILITY ESM'T. (P.B.12, P.360-362)

EXIST. PRIVATE 20' WYTHE CREEK FARMS HOMEOWNER'S ASSOCIATION DRAINAGE & UTILITY ESM'T. (P.B.12, P.275-282)

EXIST. 20' YORK COUNTY DRAINAGE & UTILITY ESM'T. (P.B.12, P.275-282)

EXIST. 20' YORK COUNTY DRAINAGE ESM'T (P.B.12, P.360-362)